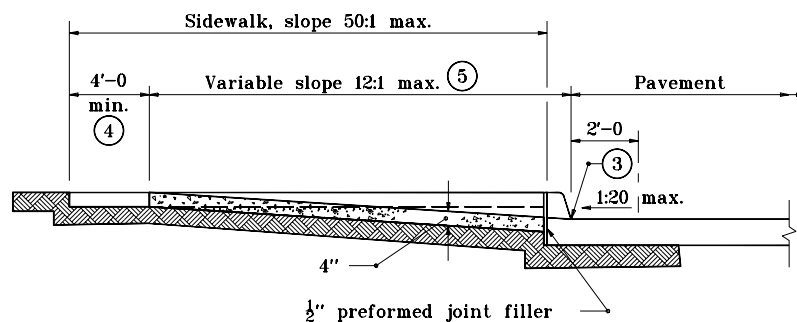
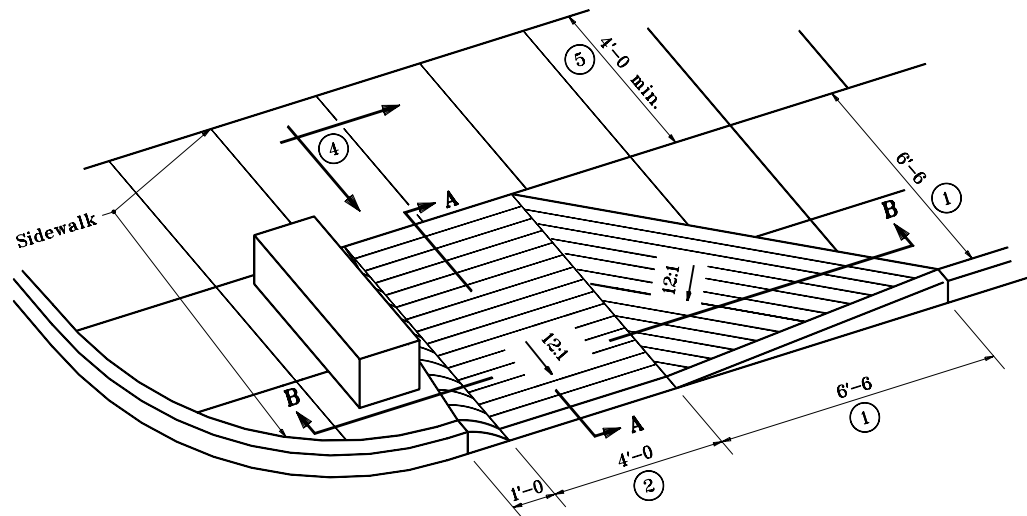
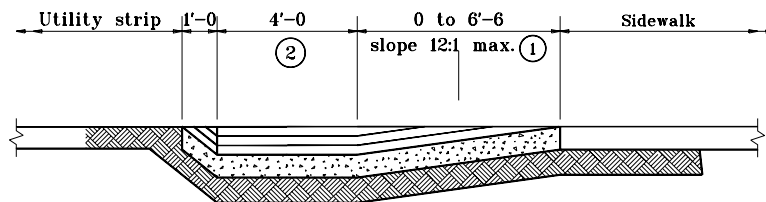


## GENERAL NOTES

- ① These dimensions are based on a 6" curb height, and shall be proportionally adjusted for other curb heights.
- ② A 3'-0 minimum width ramp may be used when existing space prohibits the construction of the 4'-0 wide ramp.
- ③ The bottom edge of the curb ramp shall be flush with the edge of the adjacent pavement and gutter line.
- ④ Landing areas at the top of curb ramps shall have maximum cross slope of 1:50 in any direction. Where site infeasibility on a 3R project precludes a landing slope of 1:50 in any direction, the slope perpendicular to the curb face shall not exceed 1:50.
- ⑤ If site infeasibility on a 3R project precludes construction as shown, the landing width may be decreased to 3'-0 minimum and the running slope of the curb ramp may be increased to a maximum of 10:1 for 6" of rise.



**SECTION A-A**



**SECTION B-B**

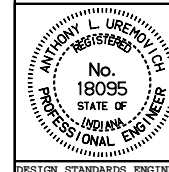
INDIANA DEPARTMENT OF TRANSPORTATION

## CURB RAMP TYPE D

JANUARY 1997

STANDARD DRAWING NO. **E 604-SWCR-06**

DETAILS PLACED IN THIS FORMAT 7-27-99



/s/ Anthony L. Uremovich 7-27-99  
DESIGN STANDARDS ENGINEER DATE

/s/ Firooz Zandi 7-27-99  
CHIEF HIGHWAY ENGINEER DATE  
ORIGINALLY APPROVED 1-02-97