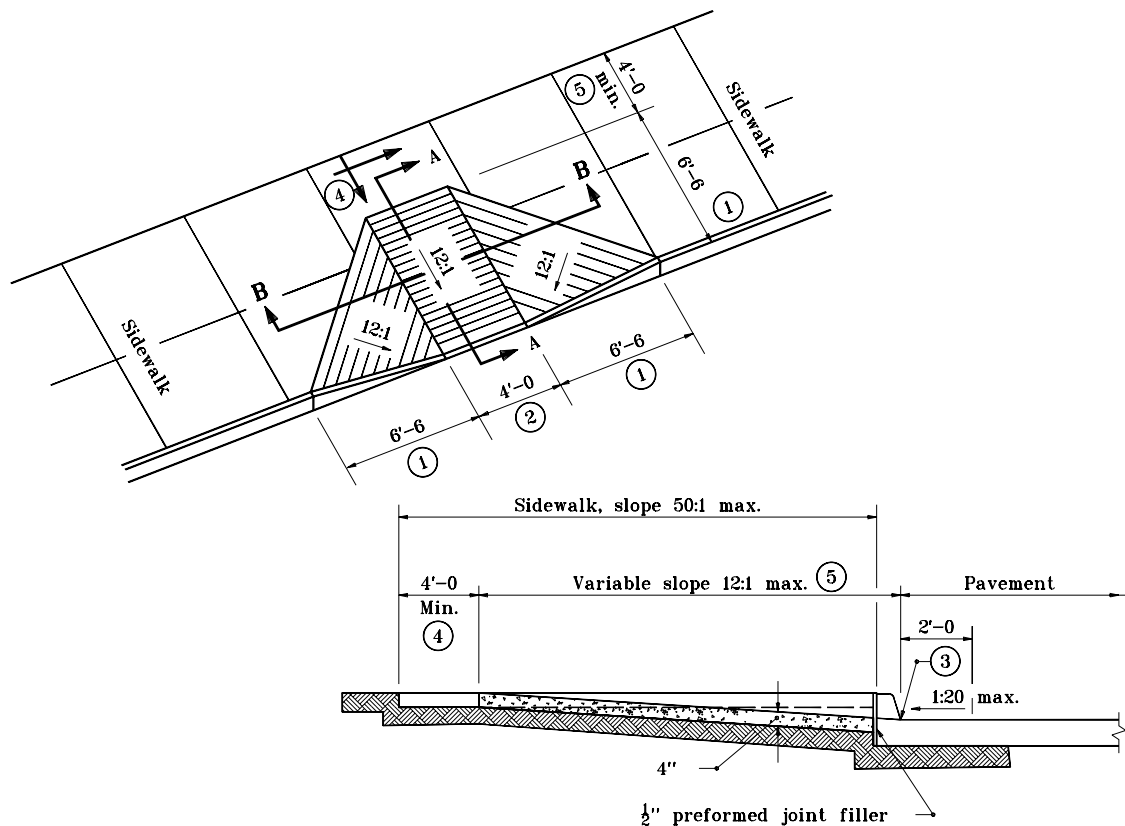
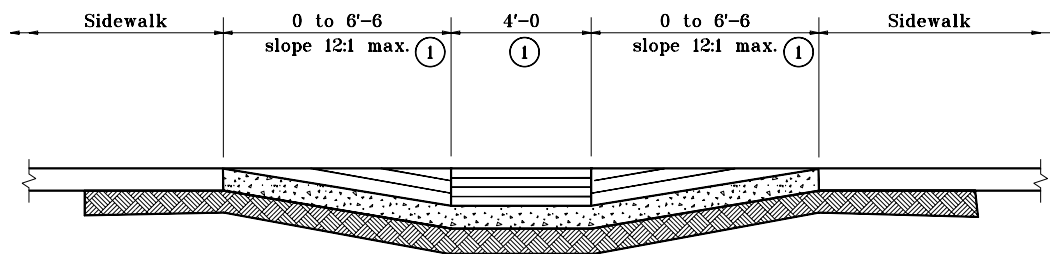


GENERAL NOTES

- ① These dimensions are based on a 6" curb height, and shall be proportionally adjusted for other curb heights.
- ② A 3'-0 minimum width ramp may be used when existing space prohibits the construction of the 4'-0 wide ramp.
- ③ The bottom edge of the curb ramp shall be flush with the edge of the adjacent pavement and gutter line.
- ④ Landing areas at the top of curb ramps shall have maximum cross slope of 1:50 in any direction. Where site infeasibility on a 3R project precludes a landing slope of 1:50 in any direction, the slope perpendicular to the curb face shall not exceed 1:50.
- ⑤ If site infeasibility on a 3R project precludes construction as shown, the landing width may be decreased to 3'-0 minimum and the running slope of the curb ramp may be increased to a maximum of 10:1 for 6" of rise.



SECTION A-A



SECTION B-B

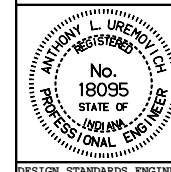
INDIANA DEPARTMENT OF TRANSPORTATION

CURB RAMP TYPE A

APRIL 1995

STANDARD DRAWING NO. E 604-SWCR-03

DETAILS PLACED IN THIS FORMAT 7-27-99



/s/ Anthony L. Uremovich 7-27-99
DESIGN STANDARDS ENGINEER DATE

/s/ Firooz Zandi 7-27-99
CHIEF HIGHWAY ENGINEER DATE

DESIGN STANDARDS ENGINEER

ORIGINALLY APPROVED 4-03-95