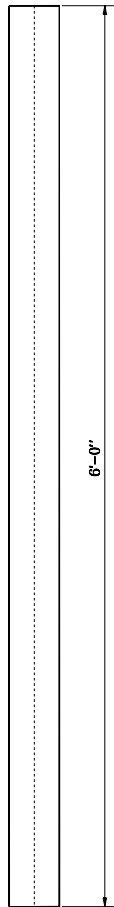
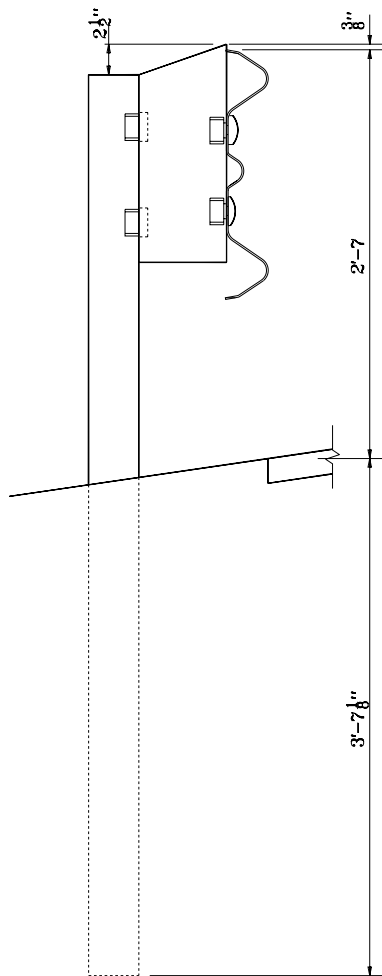


FRONT VIEW



BACK VIEW

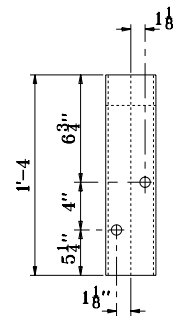


SIDE VIEW

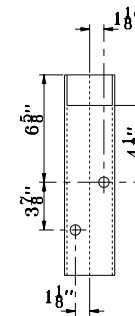
W 6 x 9 POST DETAILS

NOTE:

1. All holes drilled or punched to $\frac{3}{4}$ " dia.



FRONT VIEW



BACK VIEW

TS 7 x 4 x $\frac{3}{8}$ BLOCK DETAILS

POST AND BLOCK AT
W-THREE BEAM TRANSITION
SECTION CENTER POST

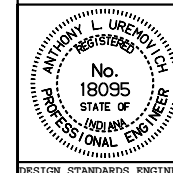
INDIANA DEPARTMENT OF TRANSPORTATION

GUARDRAIL TRANSITION

TYPE TGB

JANUARY 2000

STANDARD DRAWING NO. **E 601-TTGB-04**



/s/ Anthony L. Uremovich 1-03-00
DESIGN STANDARDS ENGINEER DATE

/s/ Donald W. Lucas 1-03-00
CHIEF HIGHWAY ENGINEER DATE