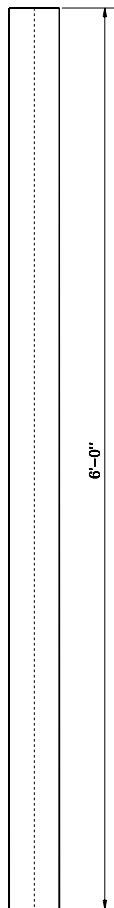
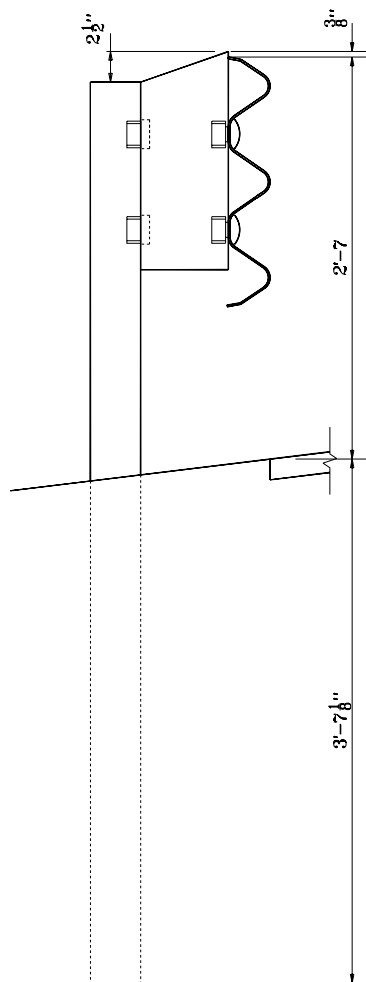


**FRONT VIEW**



**BACK VIEW**

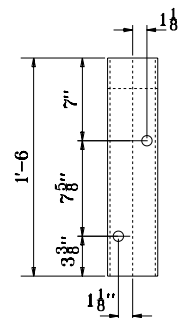


**SIDE VIEW**

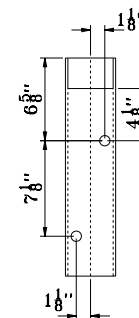
**W 6 x 9 POST DETAILS**

**NOTE:**

1. All holes drilled or punched to 3/4" dia.



**FRONT VIEW**



**BACK VIEW**

**TS 7 x 4 x 3/8 BLOCK DETAILS**

POST AND BLOCK AT  
THRIE BEAM / W-THRIE  
TRANSITION SECTION SPLICE

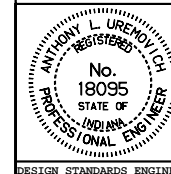
INDIANA DEPARTMENT OF TRANSPORTATION

**GUARDRAIL TRANSITION**

**TYPE TGB**

JANUARY 2000

STANDARD DRAWING NO. **E 601-TTGB-03**



**/s/ Anthony L. Uremovich** 1-03-00  
DESIGN STANDARDS ENGINEER DATE

**/s/ Donald W. Lucas** 1-03-00  
CHIEF HIGHWAY ENGINEER DATE