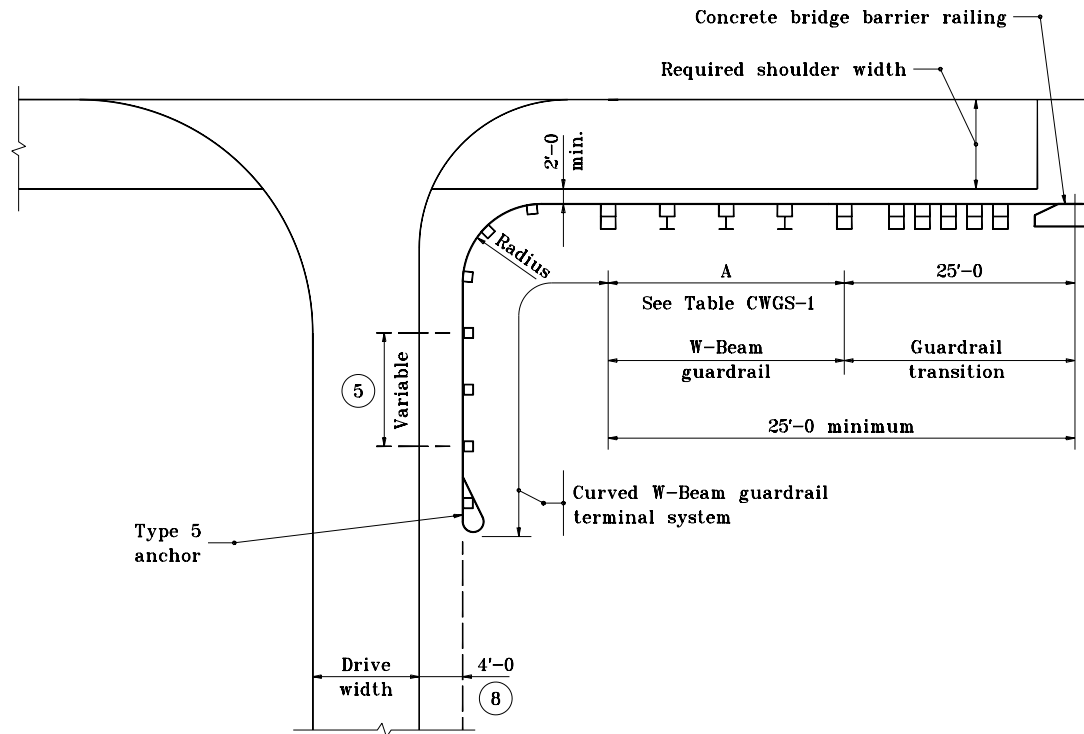


TABLE CWGS-1

A	GUARDRAIL TRANSITION
A 25	Type WGB
IV 25	Type TGB

GENERAL NOTES

1. See Standard Drawing E 601-CWGS-03 for General Notes.



**DRIVE INSTALLATION FOR
W-BEAM GUARDRAIL AT BRIDGE END**

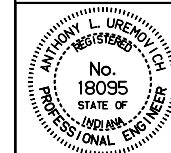
INDIANA DEPARTMENT OF TRANSPORTATION

**CURVED W-BEAM GUARDRAIL
CONNECTOR SYSTEM**

SEPTEMBER 1998

STANDARD DRAWING NO. **E 601-CWGS-01**

DETAILS PLACED IN THIS FORMAT 7-27-99



/s/ Anthony L. Uremovich 7-27-99
DESIGN STANDARDS ENGINEER DATE

/s/ Firooz Zandi 7-27-99
CHIEF HIGHWAY ENGINEER DATE

DESIGN STANDARDS ENGINEER

ORIGINALLY APPROVED 9-02-98