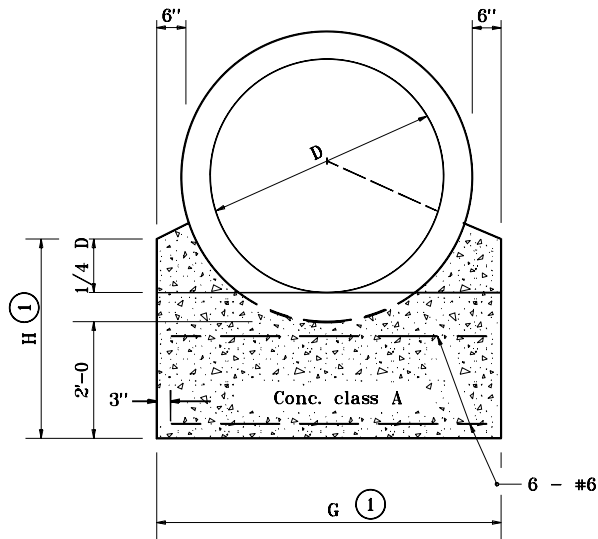
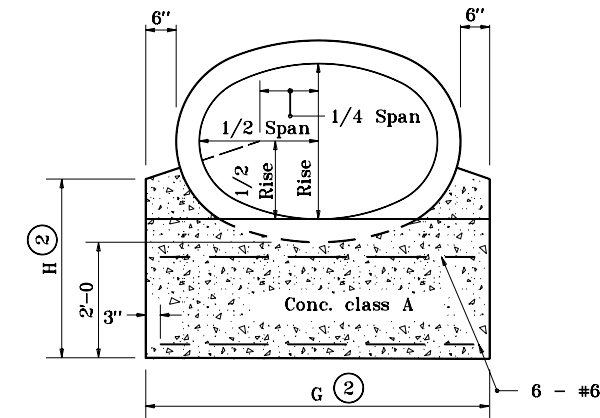


GENERAL NOTES

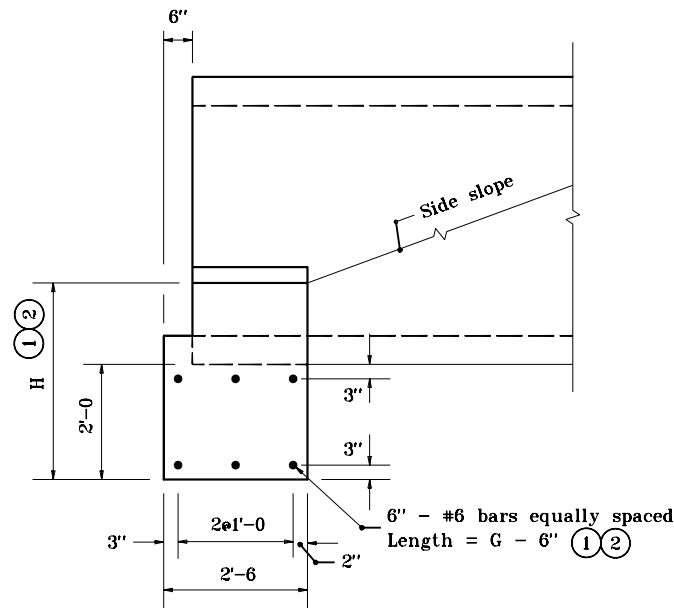
- ① For dimension or enter chart on Standard Drawing E 715-ANCH-01 with known dimension D.
- ② For dimensions, enter chart on Standard Drawing E 715-ANCH-02 with known span and rise.
3. Riprap shall be placed at the ends of pipe structures when shown on plans.



**ANCHOR FOR
REINFORCED CONCRETE PIPE
FRONT ELEVATION**



**ANCHOR FOR
REINFORCED CONCRETE HORIZONTAL ELLIPTICAL PIPE
FRONT ELEVATION**

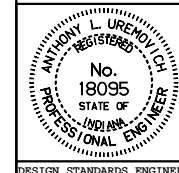


SIDE ELEVATION

INDIANA DEPARTMENT OF TRANSPORTATION

**SINGLE PIPE
CONCRETE ANCHOR**
JANUARY 1998

STANDARD DRAWING NO. **E 715-SPCA-02**



DETAILS PLACED IN THIS FORMAT 7-27-99

/s/ Anthony L. Uremovich 7-27-99
DESIGN STANDARDS ENGINEER DATE

/s/ Firooz Zandi 7-27-99
CHIEF HIGHWAY ENGINEER DATE
ORIGINALLY APPROVED 1-02-98