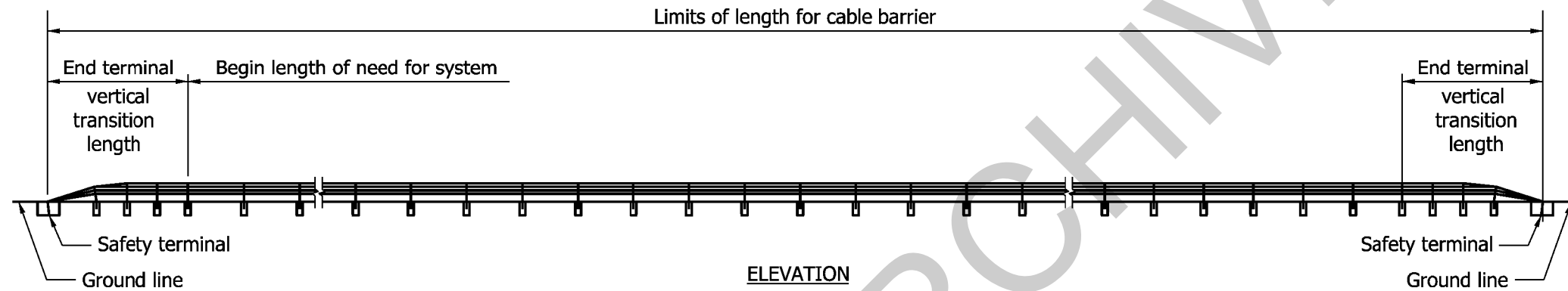
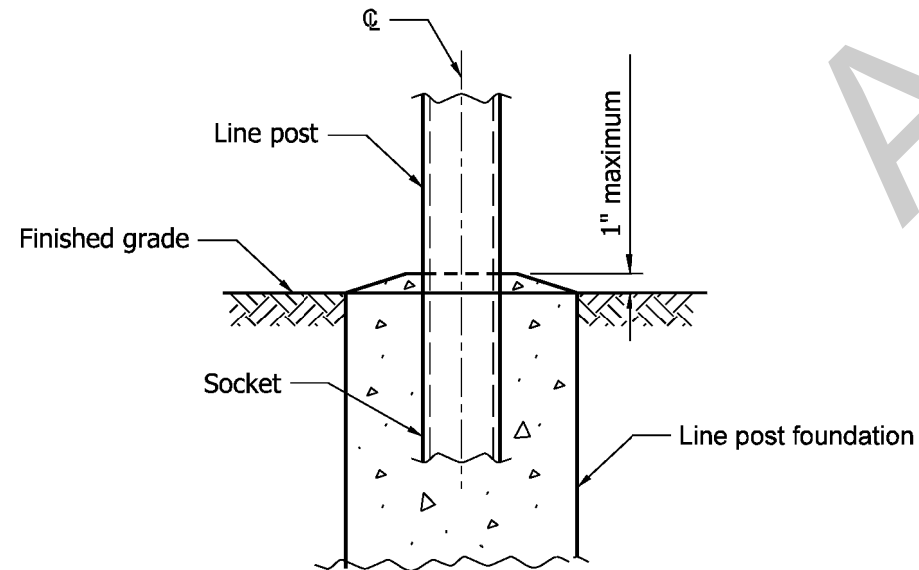


ELEVATION
LOCATION OF CBS IN MEDIAN



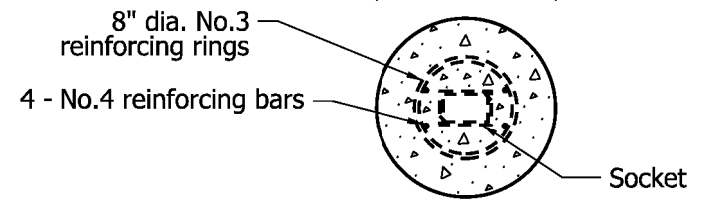
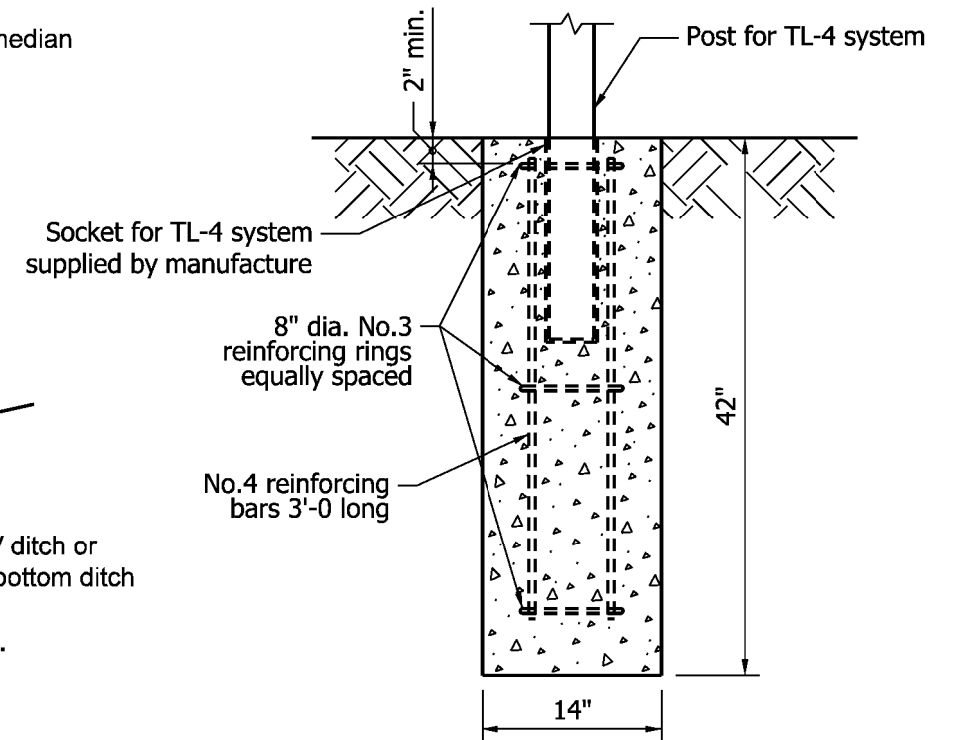
ELEVATION
TYPICAL CBS LAYOUT



DETAIL A

NOTES:

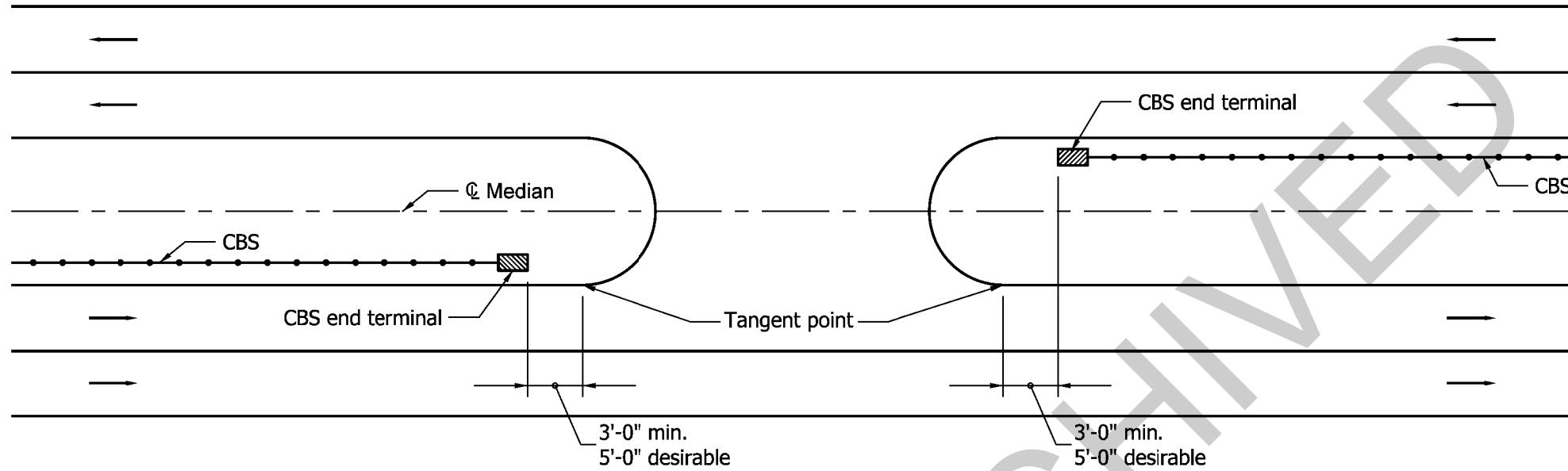
1. CBS: cable Barrier System.
2. Cable barrier placement detail shown on this drawing is applicable to median with a maximum paved shoulder width of 4 ft. and the following median widths:
 - a. A minimum median width of 48 ft. for a V ditch
 - b. A minimum median width of 52 ft. for a 4 ft. wide flat bottom ditch.
3. CBS horizontal alignment transitions shall be made on a 50:1 or flatter taper.



DETAIL B
MINIMUM SIZE AND MINIMUM REQUIRED REINFORCEMENT
FOR LINE POST FOUNDATION FOR CBS TL-4 SYSTEM

INDIANA DEPARTMENT OF TRANSPORTATION

LOCATION OF CBS IN MEDIAN



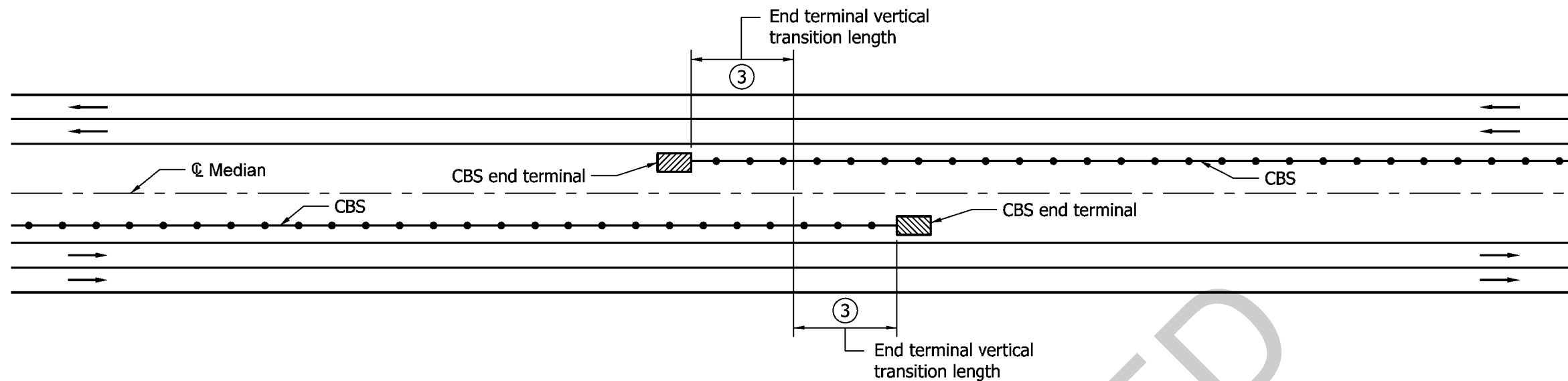
LOCATION OF CBS END TERMINAL AT MEDIAN CROSSOVER

NOTES

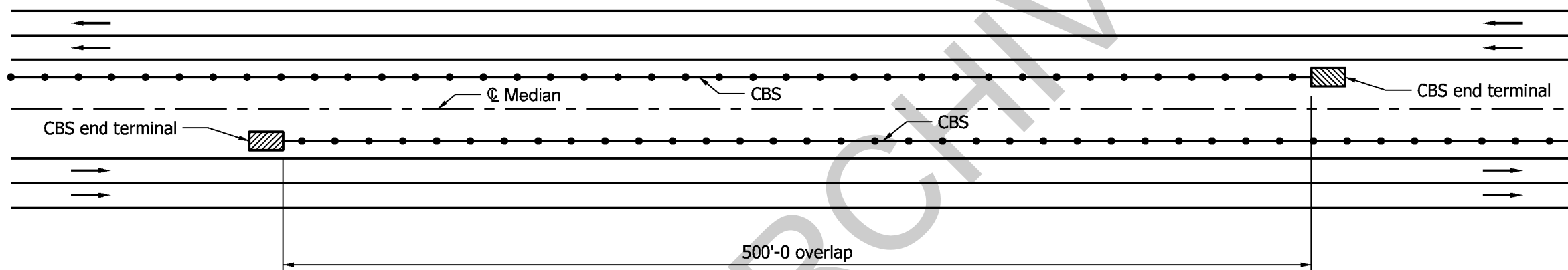
1. CBS: cable Barrier System.
2. For location of CBS, see sheet 1 of 9.

INDIANA DEPARTMENT OF TRANSPORTATION

LOCATION OF CBS END TERMINAL
AT MEDIAN CROSSOVER



CHANGING LOCATION OF CBS TRAFFIC SIDE TO OPPOSITE SIDE OF MEDIAN (DESIRABLE)



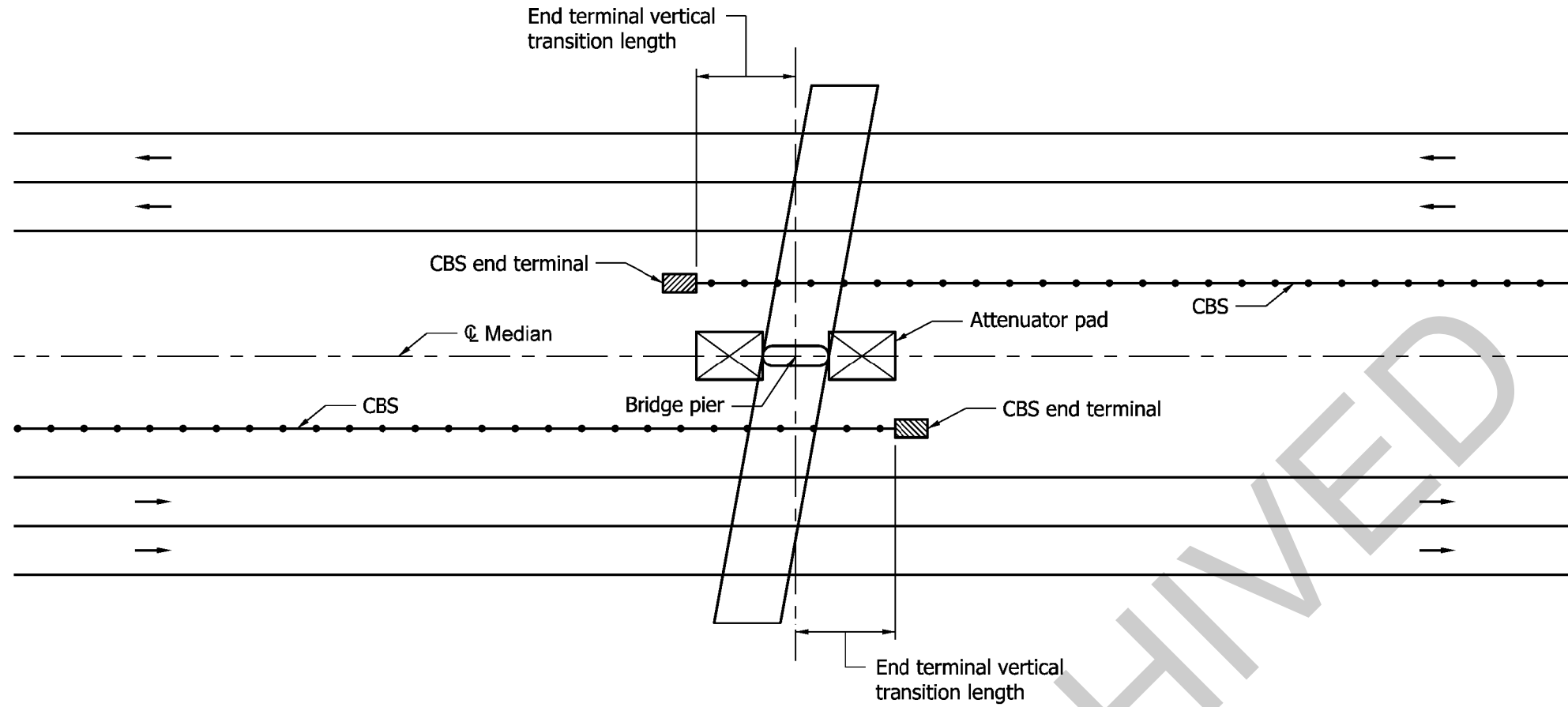
CHANGING LOCATION OF CBS TRAFFIC SIDE TO OPPOSITE SIDE OF MEDIAN TO NEAR TRAFFIC SIDE

NOTES

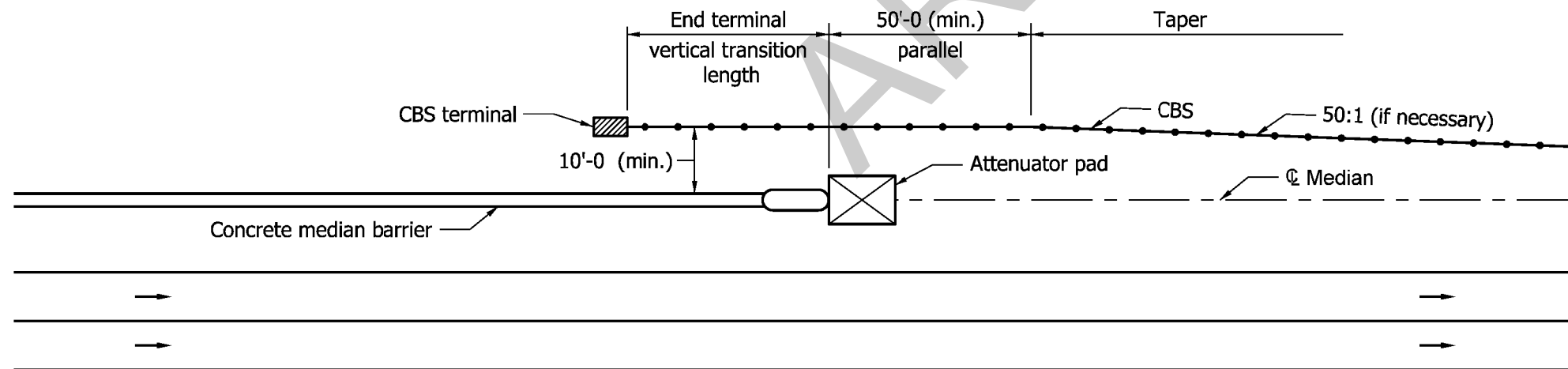
1. CBS: cable Barrier System.
2. For location of CBS, see sheet 1 of 9.
- ③ This distance shall be 0 ft when specified on plan where there is no access point within 10,000 ft for emergency crossover.

INDIANA DEPARTMENT OF TRANSPORTATION

CHANGING LOCATION OF CBS TRAFFIC
SIDE TO OPPOSITE SIDE OF MEDIAN



CBS AT MEDIAN BRIDGE PIER WITH ATTENUATOR



CBS AT CONCRETE MEDIAN BARRIER WITH ATTENUATOR

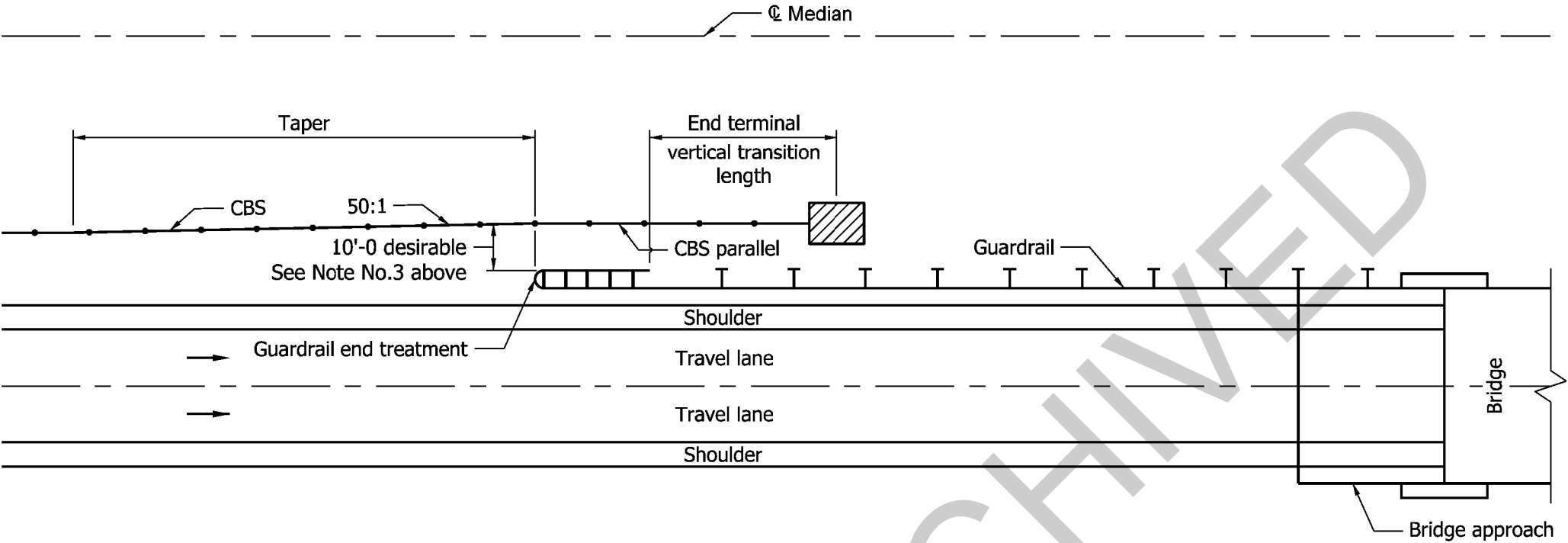
NOTES

1. CBS: cable Barrier System.
2. For location of CBS, see sheet 1 of 9.

INDIANA DEPARTMENT OF TRANSPORTATION

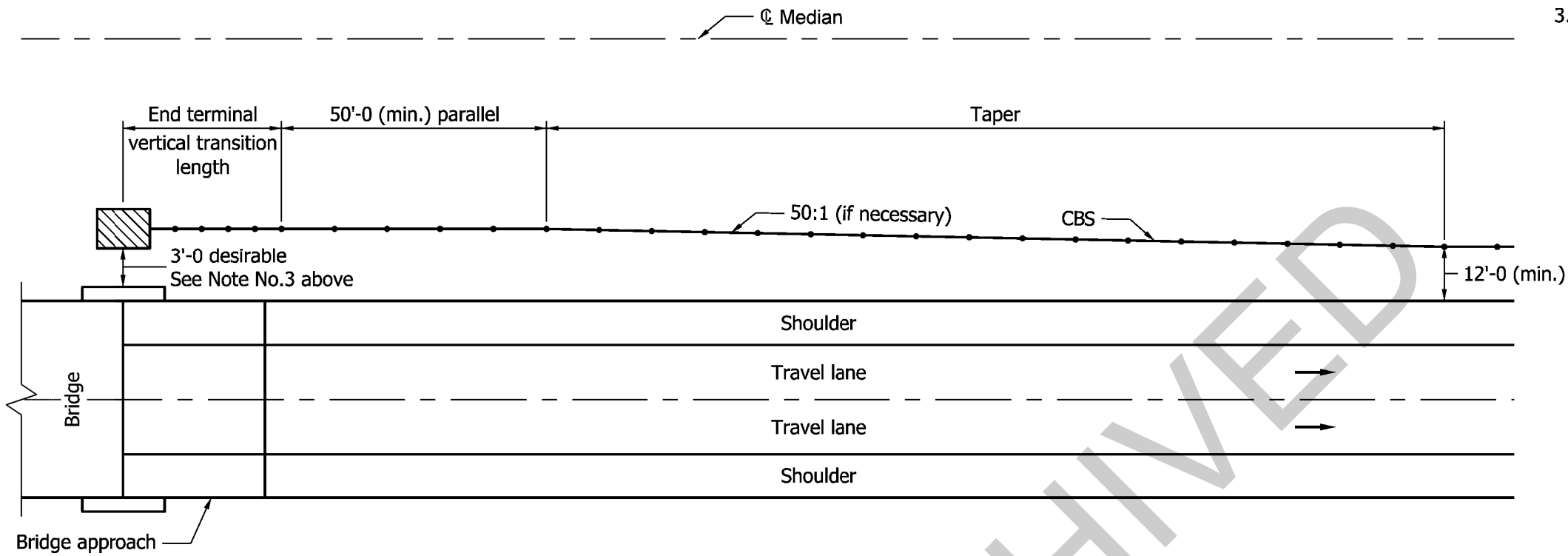
CBS AT MEDIAN BRIDGE PIER

- Notes:
- 1. CBS: Cable Barrier System.
 - 2. For location of CBS, see sheet 1 of 9.
 - 3. Adjust as necessary to maintain 8'-0 minimum from ditch as shown on sheet 1 of 9.



CBS INCOMING END OF BRIDGE IN MEDIAN

INDIANA DEPARTMENT OF TRANSPORTATION
CBS INCOMING END OF BRIDGE IN MEDIAN

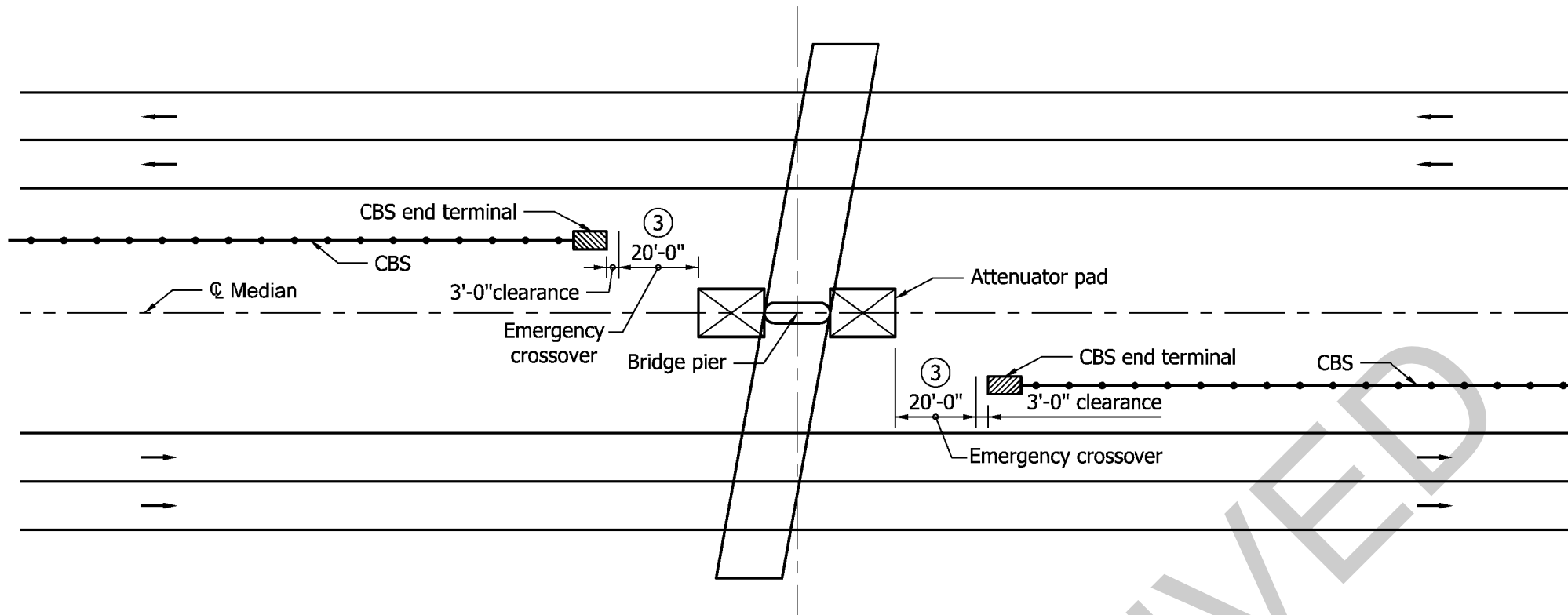


CBS OUTGOING END OF BRIDGE IN MEDIAN

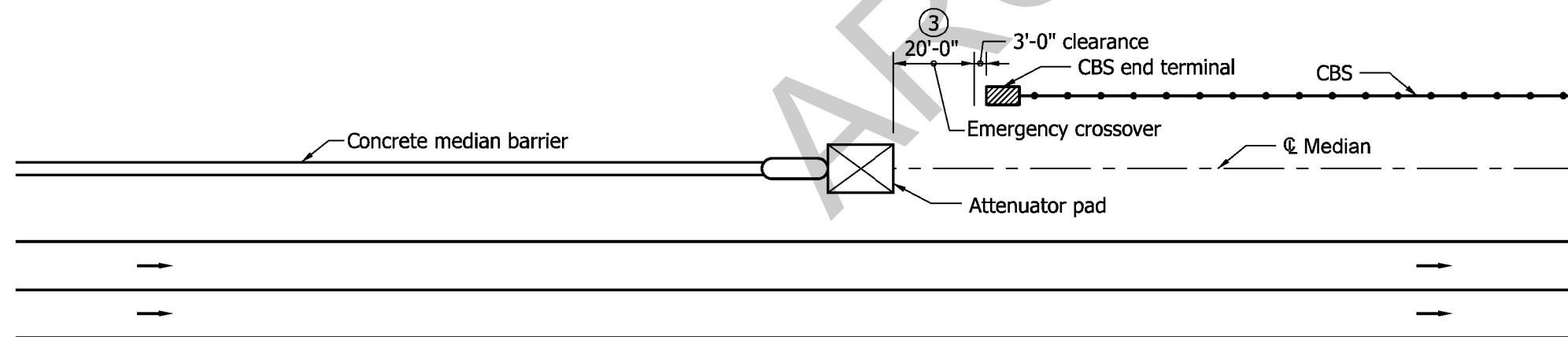
Notes:

- 1. CBS: Cable Barrier System.
- 2. For location of CBS, see sheet 1 of 9.
- 3. Adjust as necessary to maintain 8'-0 minimum from ditch as shown on sheet 1 of 9.

INDIANA DEPARTMENT OF TRANSPORTATION
CBS OUTGOING END OF BRIDGE IN MEDIAN



CBS AT MEDIAN BRIDGE PIER WITH ATTENUATOR



CBS AT CONCRETE MEDIAN BARRIER WITH ATTENUATOR

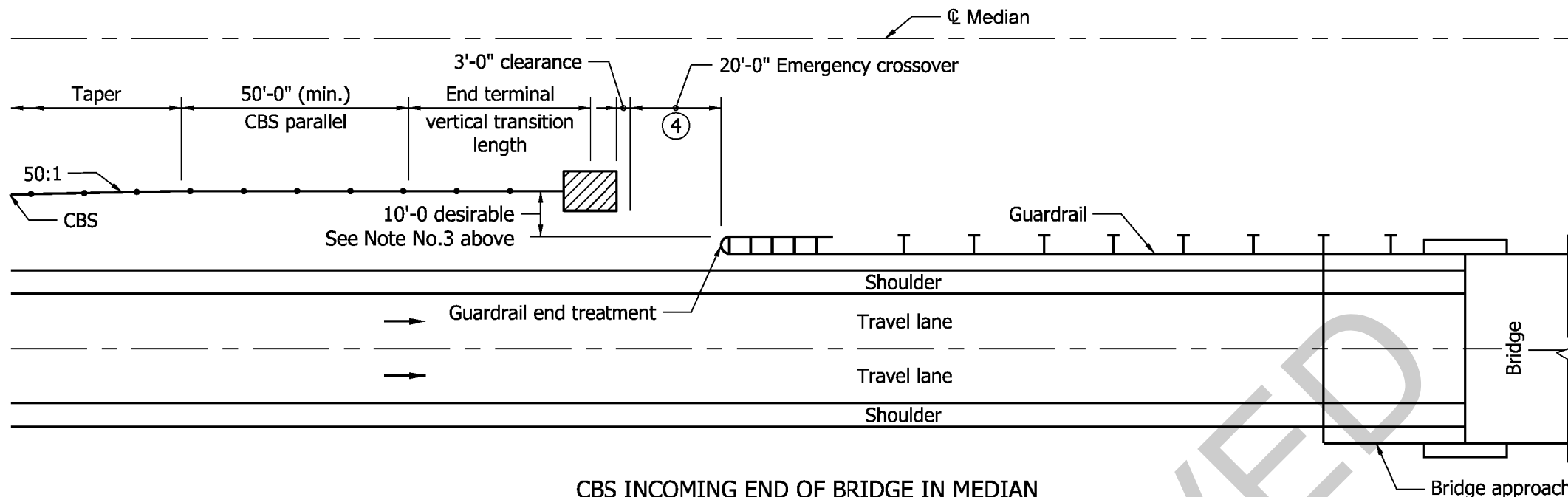
Notes:

1. CBS: Cable Barrier System.
2. For location of CBS, See sheet 1 of 9.
- ③ See plans for location of emergency crossover and soil stabilization requirement.

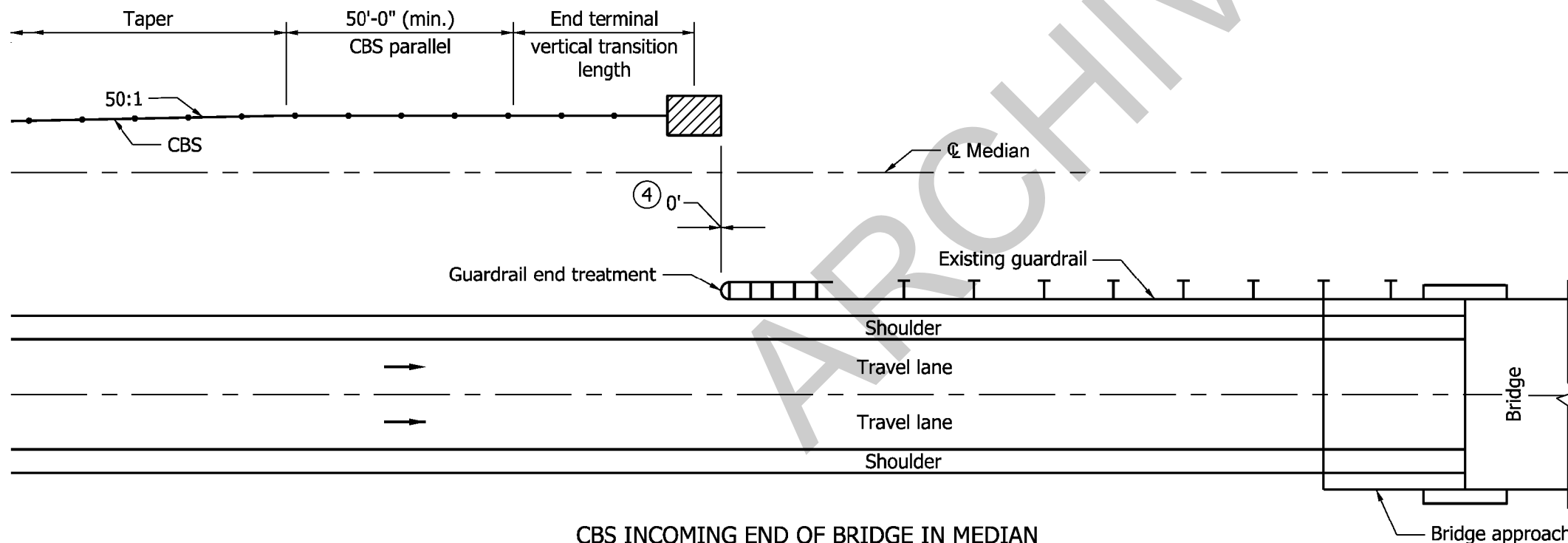
INDIANA DEPARTMENT OF TRANSPORTATION

CBS AT MEDIAN BRIDGE PIER
EMERGENCY CROSSOVER

05-01-11



**CBS INCOMING END OF BRIDGE IN MEDIAN
CBS AND GUARDRAIL ON SAME SIDE OF MEDIAN**



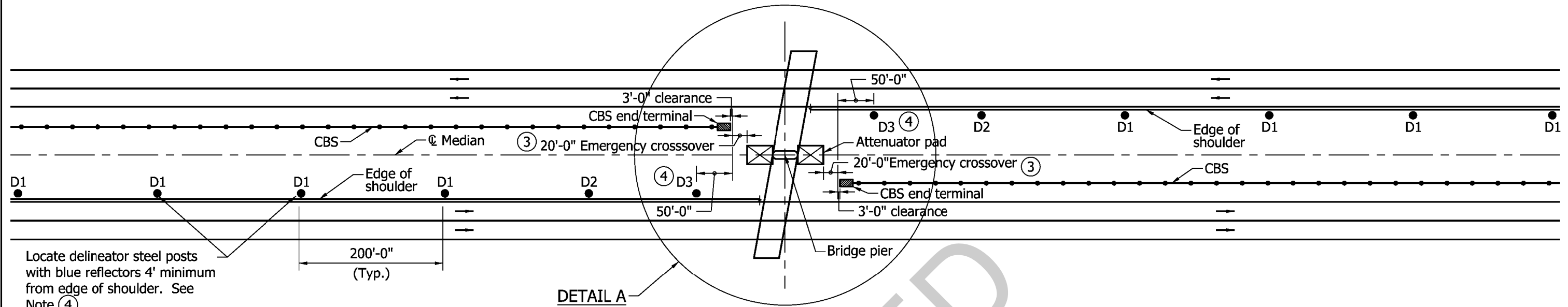
**CBS INCOMING END OF BRIDGE IN MEDIAN
CBS AND GUARDRAIL ON OPPOSITE SIDE OF MEDIAN**

Notes:

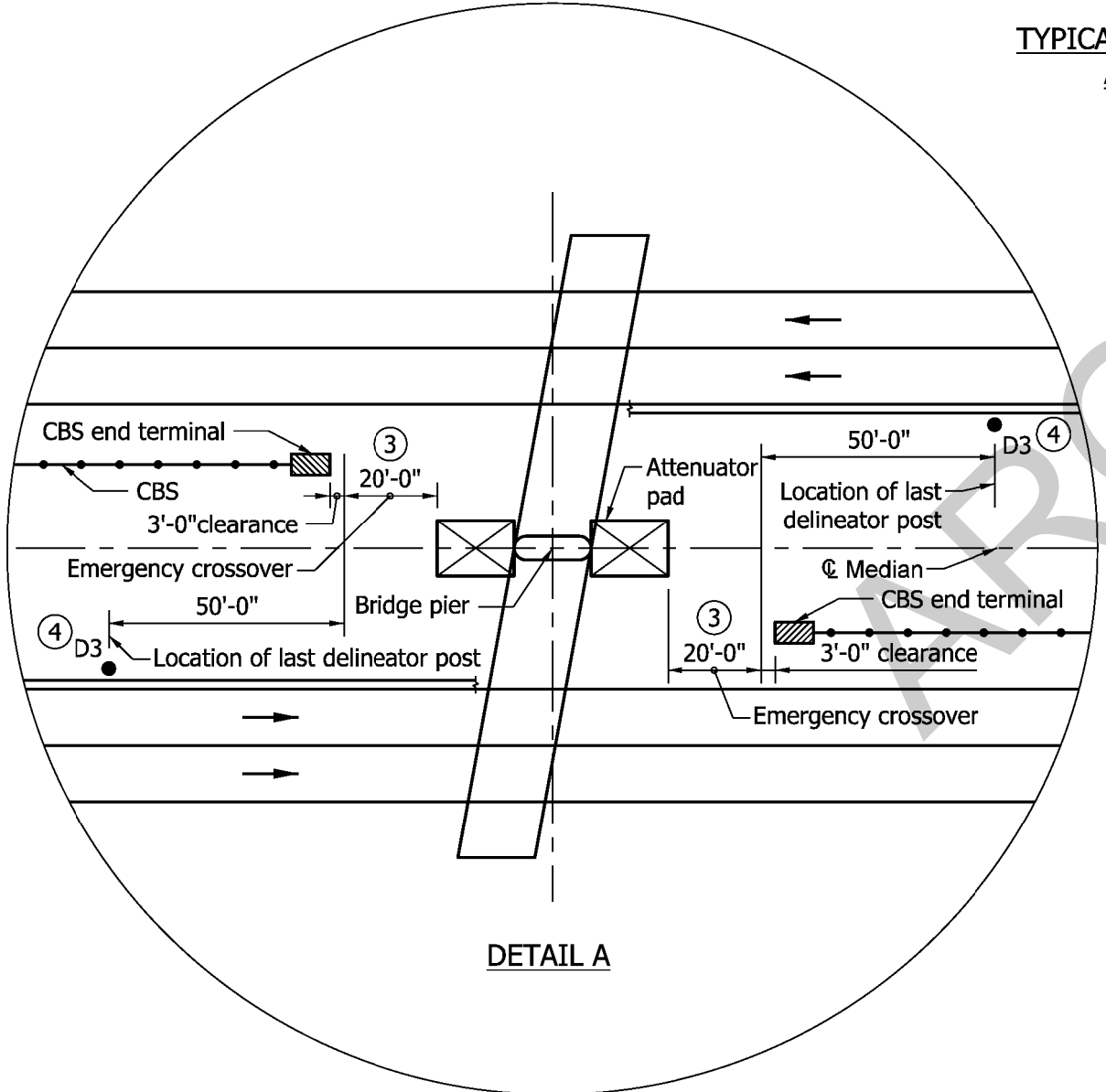
1. CBS: Cable Barrier System.
2. For location of CBS, see sheet 1 of 9.
3. Adjust as necessary to maintain 8'-0" minimum from ditch as shown on sheet 1 of 9.
- (4) See plans for location of emergency crossover and soil stabilization requirement.

INDIANA DEPARTMENT OF TRANSPORTATION

**CBS INCOMING END OF BRIDGE IN MEDIAN
EMERGENCY CROSSOVER**



TYPICAL DETAIL FOR DELINEATOR POSTS
AT EMERGENCY CROSSOVER



Notes:

1. CBS: Cable Barrier System.
2. For location of CBS, See sheet 1 of 9.
- ③ Location of emergency crossover when specified on plans.
- ④ Delineator post D3 with reflectors blue at top, white in the middle and blue at bottom.