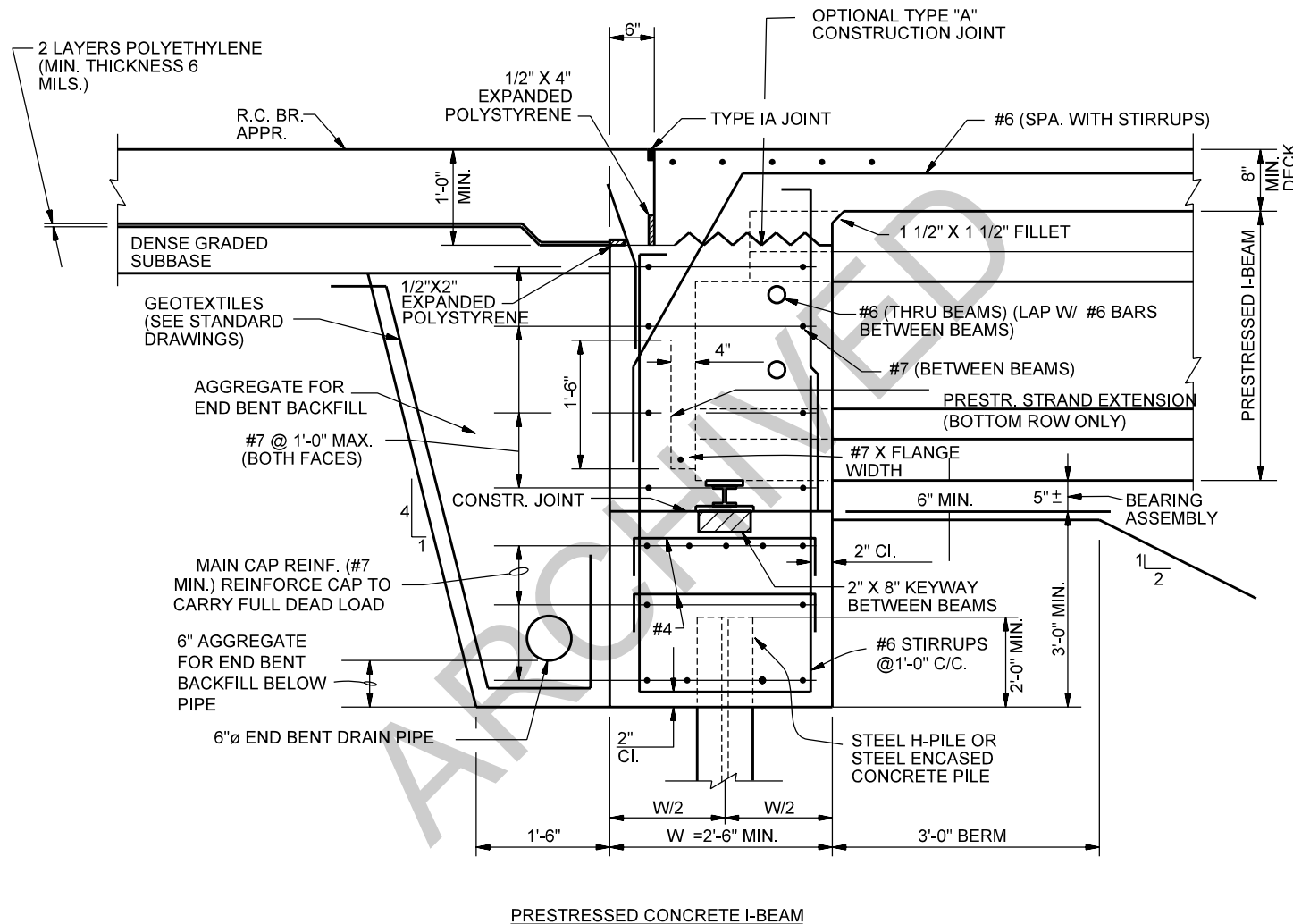


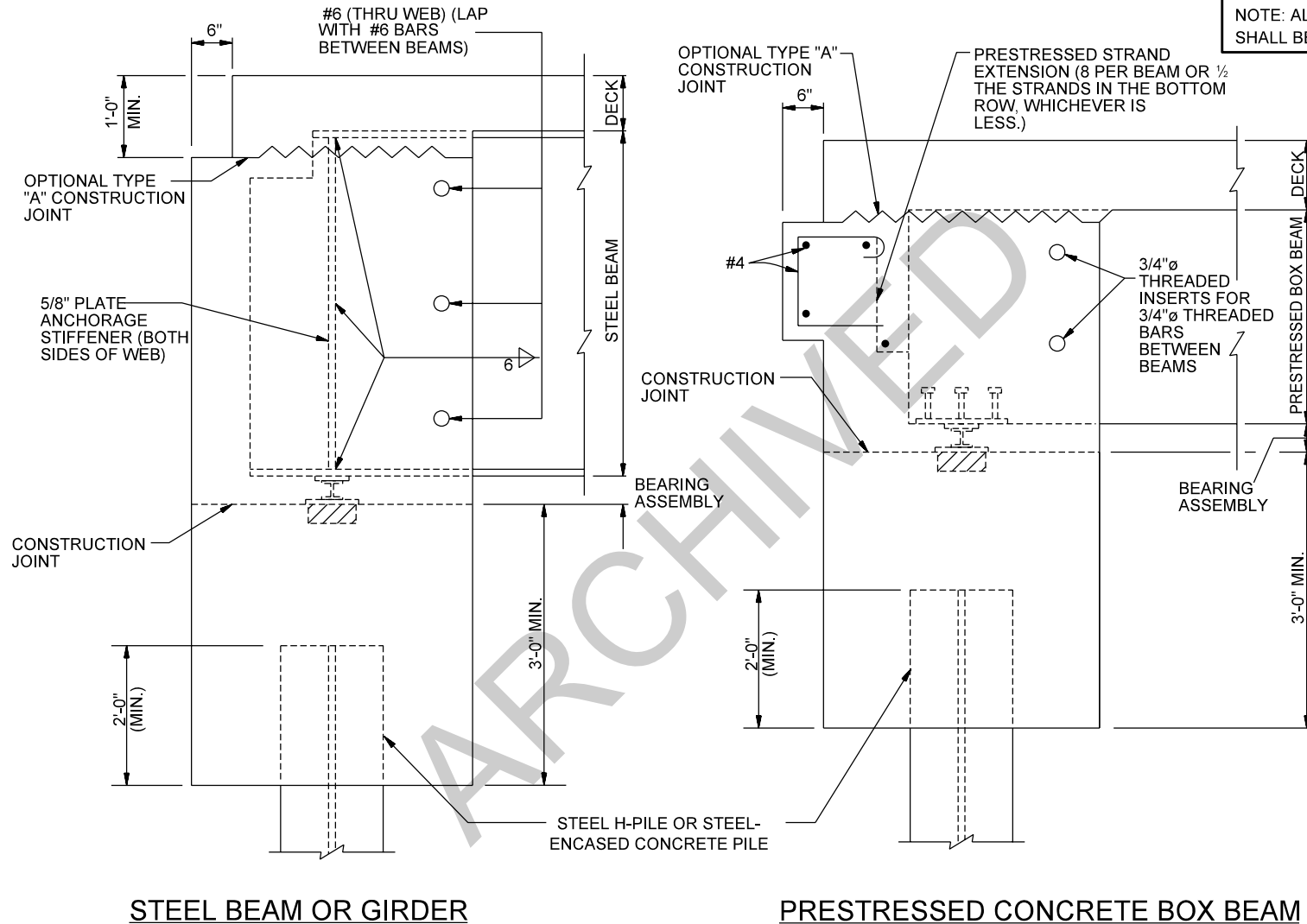
NOTE: ALL REINFORCING STEEL SHALL BE EPOXY COATED.



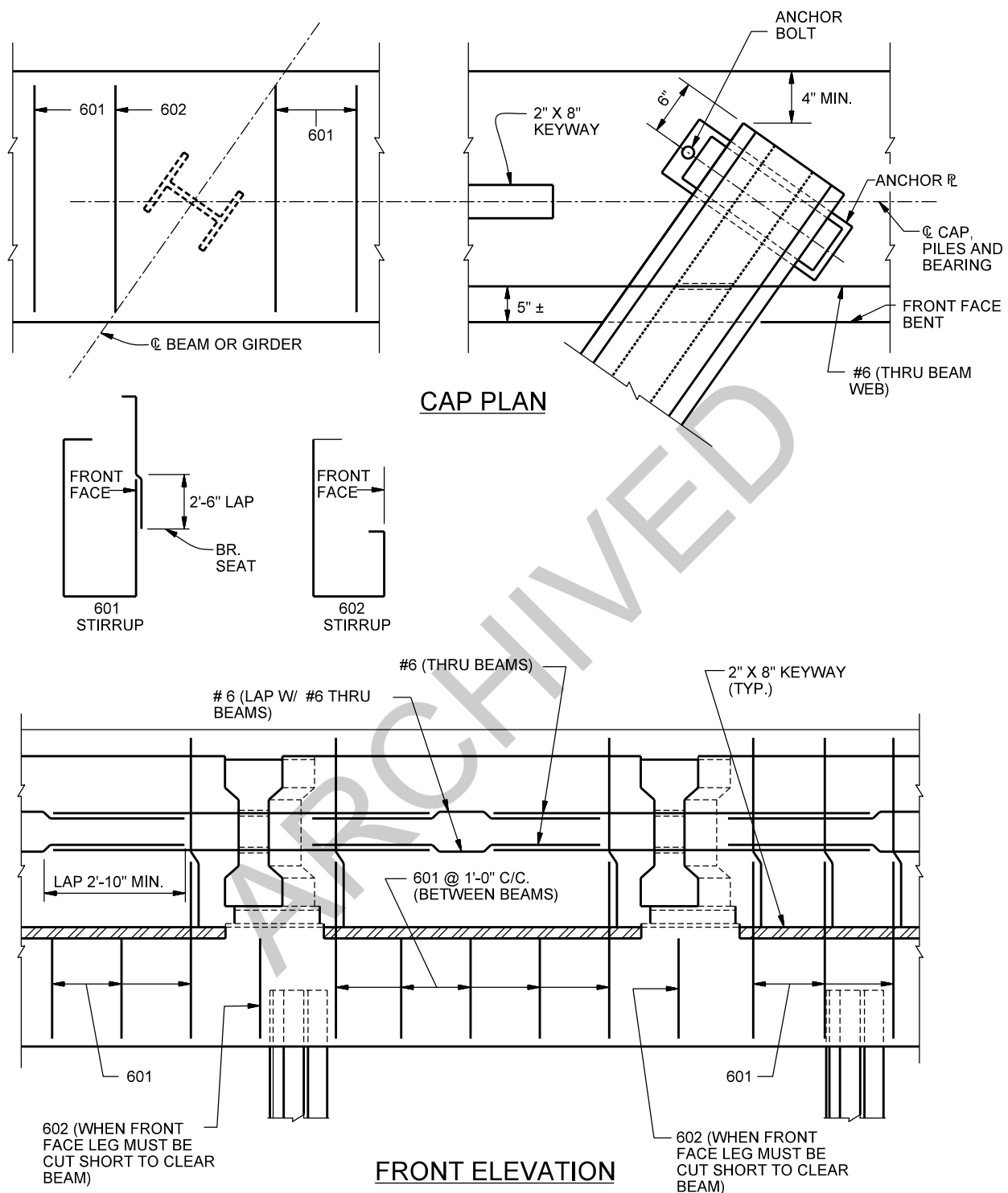
SUGGESTED INTEGRAL END BENT DETAILS  
(Beams Attached to Concrete Cap, Method B)  
Figure 67-1C  
(Page 1 of 4)

REINFORCING DETAILS, BACKFILL  
BEHIND END BENT AND SIMILAR  
DETAILS ARE AS SHOWN ON THE  
PRESTRESSED CONCRETE I-BEAM  
SECTION UNLESS OTHERWISE NOTED.

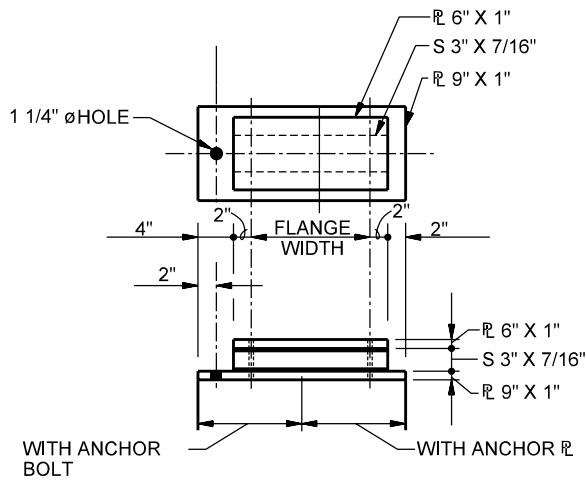
NOTE: ALL REINFORCING STEEL  
SHALL BE EPOXY COATED.



SUGGESTED INTEGRAL END BENT DETAILS  
(Beams Attached to Concrete Cap, Method B)  
Figure 67-1C  
(Page 2 of 4)

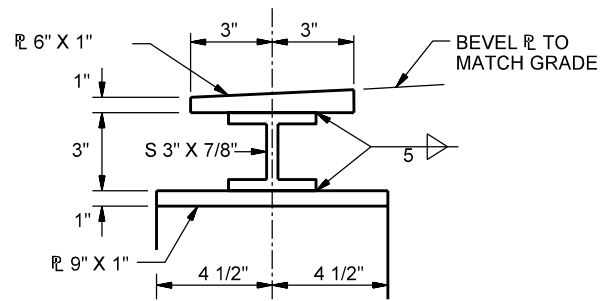


**SUGGESTED INTEGRAL END BENT DETAILS**  
 (Beams Attached to Concrete Cap, Method B)  
 Figure 67-1C  
 (Page 3 of 4)



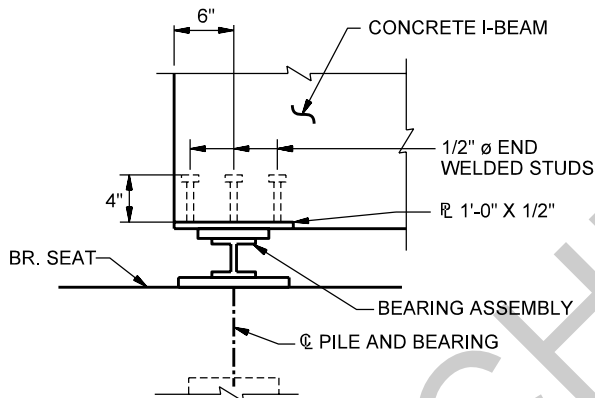
**BEARING ASSEMBLY**

TOP / SIDE VIEW



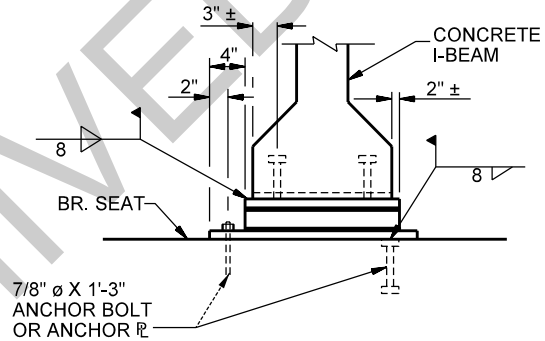
**BEARING ASSEMBLY**

END VIEW



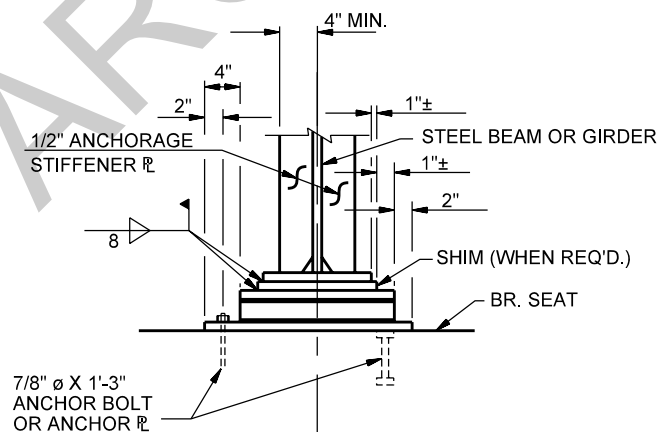
**CONCRETE I-BEAM**

SIDE VIEW



**CONCRETE I-BEAM**

END VIEW



**STEEL I-BEAM**

END VIEW

**SUGGESTED INTEGRAL END BENT DETAILS**  
(Beams Attached Directly to Concrete Cap, Method B)

Figure 67-1C

(Page 4 of 4)