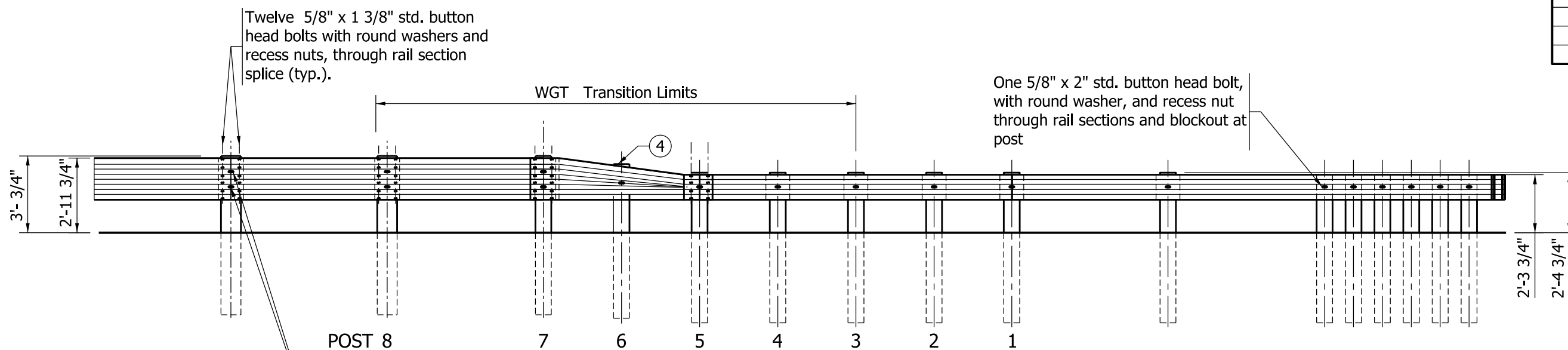


PARTIAL PLAN VIEW

Post	Blockouts
1	W-Beam
2	9" x 6"
3	10" x 6"
4	11" x 6"
5	12" x 6"
6	13" x 6"
7	W 14 x 22
8	W 14 x 22



LEGEND:

- ┆ - W 6 x 9 Post
- ┆ - W 14 x 22 Blockout
- - Approved W-Beam Blockout

NOTES:

1. See Standard Drawing E 601-MTGR-01 for Thrie Beam Guardrail details.
2. See Standard Drawing E 601-TWGT-01 for Guardrail Transition WGT details.
3. See Standard Drawings E 601-WBGA-01 through -03 and E 601-WBGC-01 through -03 for W- Beam Guardrail details.
- ④ At post 6 on the thrie beam guardrail transition to W-Beam guardrail, the maximum post exposure above the top of the transition rail shall be limited to 1".

INDIANA DEPARTMENT OF TRANSPORTATION	
DOUBLE FACED THRIE BEAM GUARDRAIL TRANSITION TO GRET TYPE MS SEPTEMBER 2011	
STANDARD DRAWING NO.	E 601-TTMS-01
	/s/ <i>Richard L. VanCleave</i> 09/01/11 DESIGN STANDARDS ENGINEER DATE
DESIGN STANDARDS ENGINEER	/s/ <i>Mark A. Miller</i> 09/01/11 CHIEF HIGHWAY ENGINEER DATE