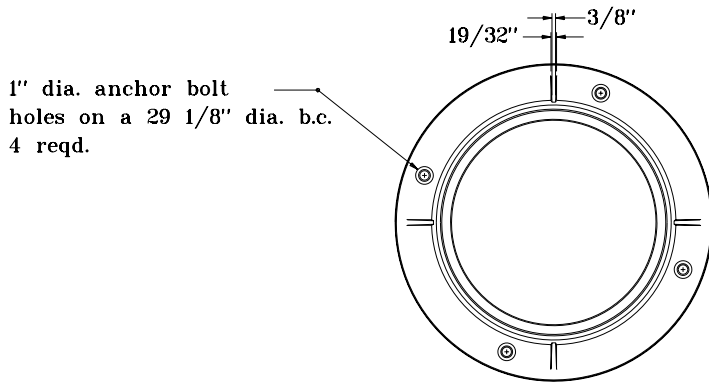
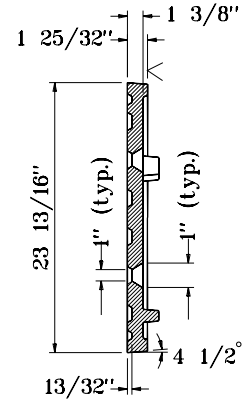
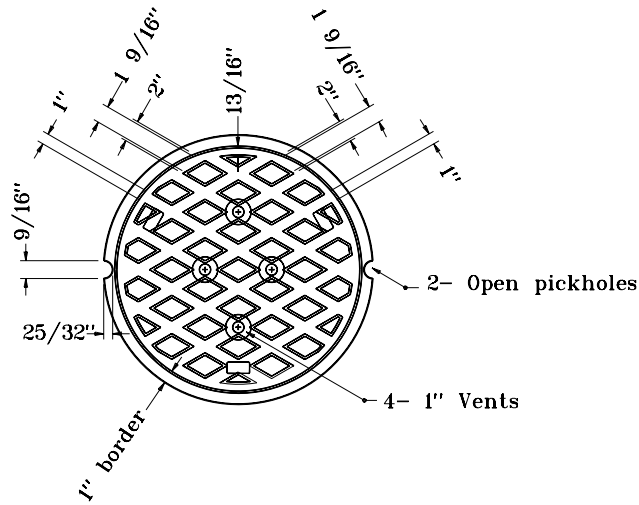
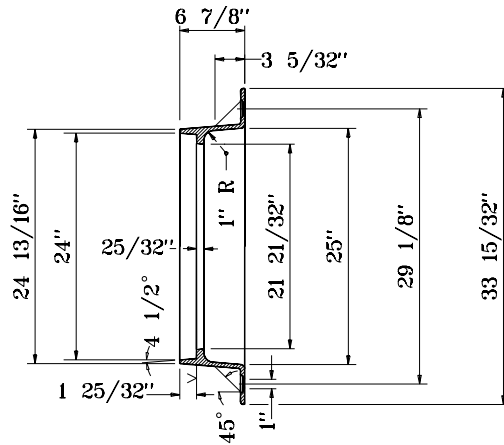


INDIANA DEPARTMENT OF TRANSPORTATION	
FLAT TOP GRATE CASTING	
TYPE 2	
SEPTEMBER 1998	
STANDARD DRAWING NO. E 720-MHCA-01	
DETAILS PLACED IN THIS FORMAT 11-15-99	
	/s/ Anthony L. Uremovich 11-15-99 DESIGN STANDARDS ENGINEER DATE
	/s/ Firooz Zandi 11-15-99 CHIEF HIGHWAY ENGINEER DATE
	ORIGINALLY APPROVED 9-01-98



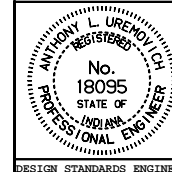
1" dia. anchor bolt holes on a 29 1/8" dia. b.c. 4 reqd.



INDIANA DEPARTMENT OF TRANSPORTATION

MANHOLE CASTING
TYPE 4 RING AND COVER
 SEPTEMBER 1998

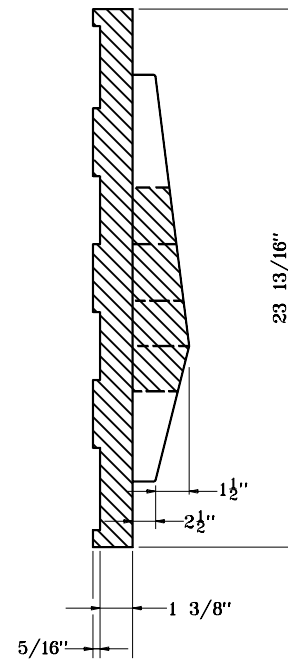
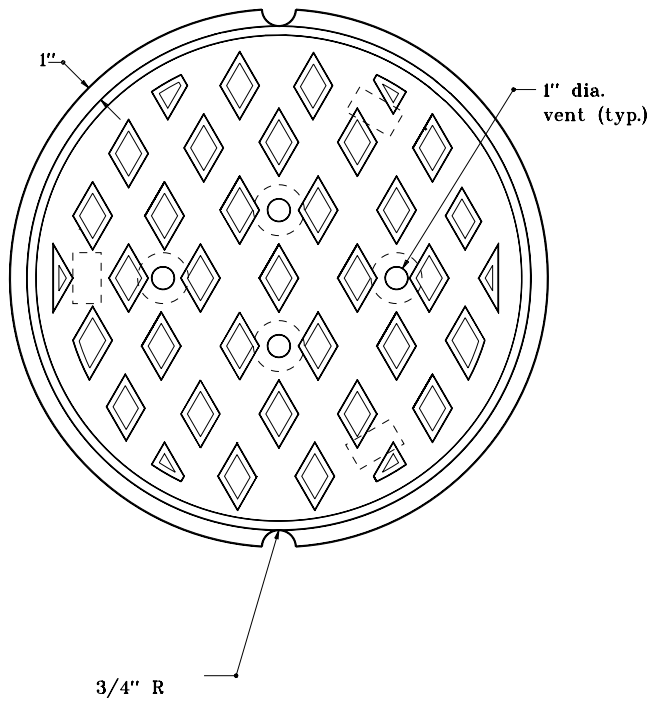
STANDARD DRAWING NO **E 720-MHCA-02**



DETAILS PLACED IN THIS FORMAT 11-15-99
 /s/ Anthony L. Uremovich 11-15-99
 DESIGN STANDARDS ENGINEER DATE

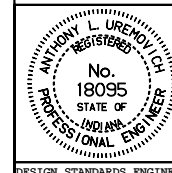
/s/ Firooz Zandi 11-15-99
 CHIEF HIGHWAY ENGINEER DATE
 ORIGINALLY APPROVED 9-01-98

DESIGN STANDARDS ENGINEER



INDIANA DEPARTMENT OF TRANSPORTATION
MANHOLE CASTING TYPE 4
ALTERNATE COVER
 SEPTEMBER 1998

STANDARD DRAWING NO. E 720-MHCA-03



DETAILS PLACED IN THIS FORMAT 11-15-99

/s/ Anthony L. Uremovich 11-15-99
 DESIGN STANDARDS ENGINEER DATE

/s/ Firooz Zandi 11-15-99
 CHIEF HIGHWAY ENGINEER DATE

DESIGN STANDARDS ENGINEER

ORIGINALLY APPROVED 9-01-98