

INDEX

SHEET NO.	SUBJECT
1	Concrete Bridge Railing Transition Index and General Notes
2	Concrete Bridge Railing Transition, TPF-1 Plan and Elevation
3	Concrete Bridge Railing Transition, TPF-1 Sections and Reinforcing Bar Bending Details
4	Concrete Bridge Railing Transition, TPS-1 Plan and Elevation
5	Concrete Bridge Railing Transition, TPS-1 Sections and Reinforcing Bar Bending Details

GENERAL NOTES:

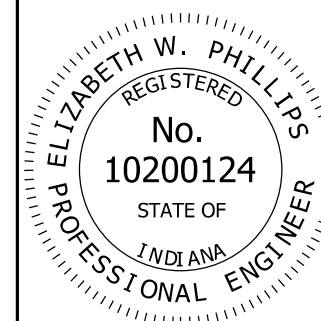
- All reinforcing bars designated E shall be epoxy coated.


INDIANA DEPARTMENT OF TRANSPORTATION

CONCRETE BRIDGE RAILING TRANSITION
INDEX AND GENERAL NOTES

SEPTEMBER 2019

STANDARD DRAWING NO. E 706-TTPP-01

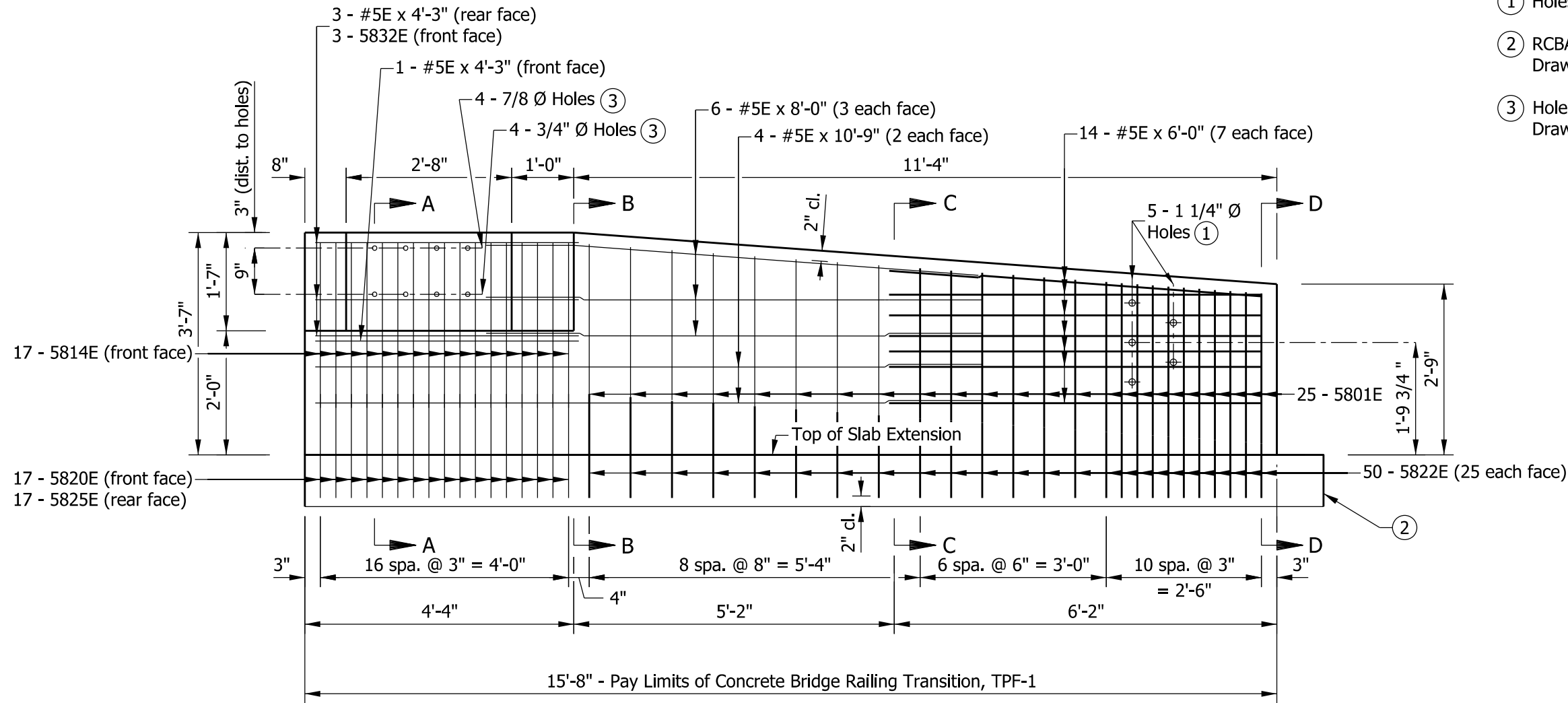



 DESIGN STANDARDS ENGINEER 5/2/2019
DATE

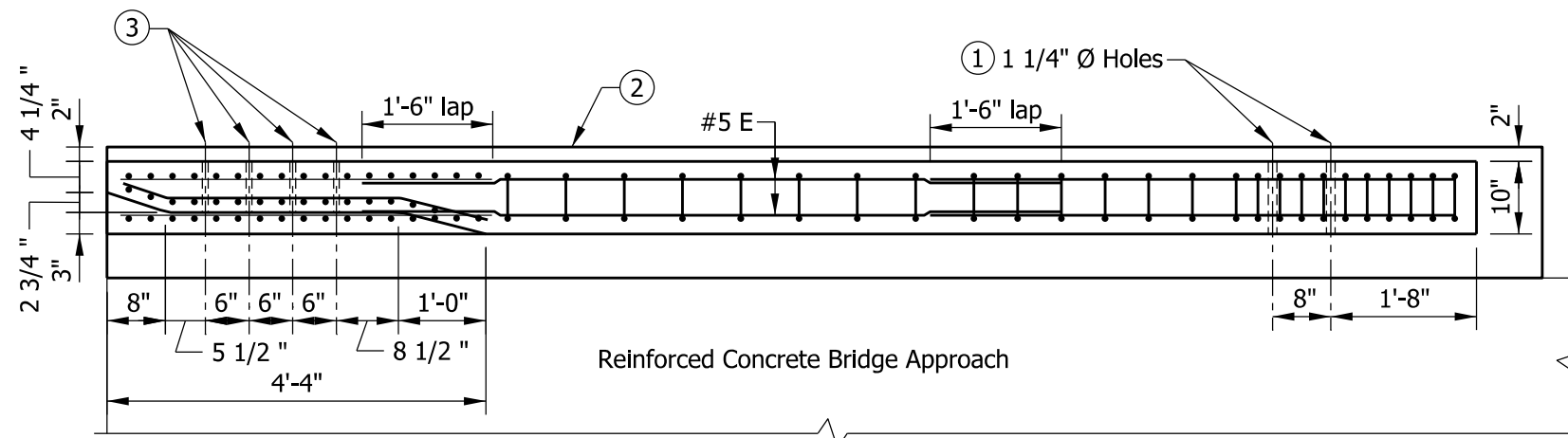

 CHIEF ENGINEER 6/5/2019
DATE

NOTES:

- ① Holes for attachment of guardrail transition.
- ② RCBA extension for bridge railing transition type TPF-1. See Standard Drawing E 609-TBAE-01 for details.
- ③ Holes for attachment of steel bridge railing type PF-1. See Standard Drawing E 706-BRPP-02 for details.



ELEVATION



PLAN

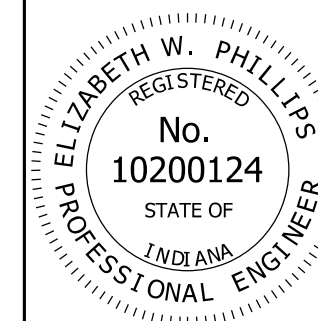
BILL OF MATERIALS			
Quantities are for one concrete bridge railing transition type TPF-1.			
EPOXY COATED REINFORCING BARS			
MARK OR SIZE	NO. OF BARS	LENGTH	WEIGHT
5801E	25	5'-4"	
5814E	17	3'-0"	
5820E	17	3'-1"	
5822E	50	3'-7"	
5825E	17	4'-8"	
5832E	3	4'-3"	
#5E	4	10'-9"	
#5E	6	8'-0"	
#5E	14	6'-0"	
#5E	4	4'-3"	
Total Epoxy Coated Reinforcing Bars			730 LBS
MISCELLANEOUS			
Concrete, Class C			1.5 CYS
Surface Seal			119 SFT



INDIANA DEPARTMENT OF TRANSPORTATION

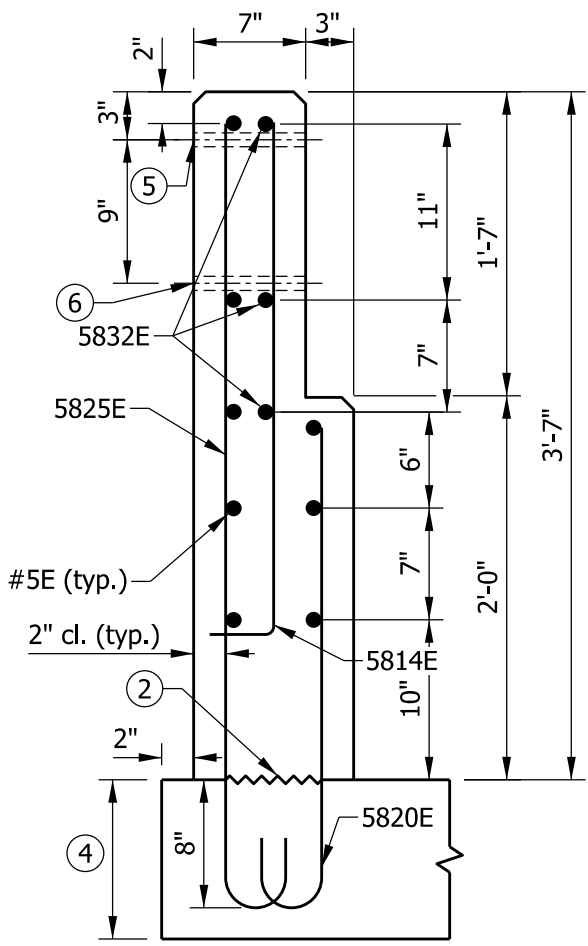
CONCRETE BRIDGE RAILING TRANSITION, TPF-1 PLAN AND ELEVATION

SEPTEMBER 2019

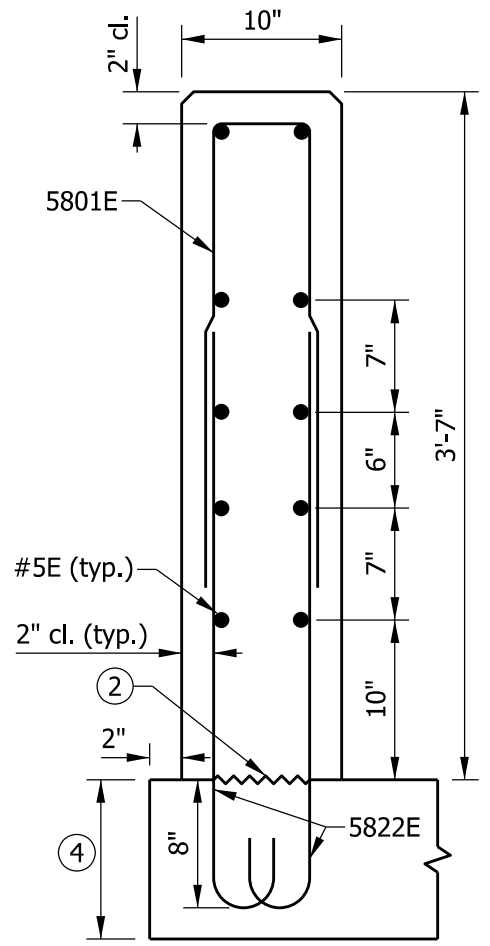
STANDARD DRAWING NO. E 706-TTPP-02



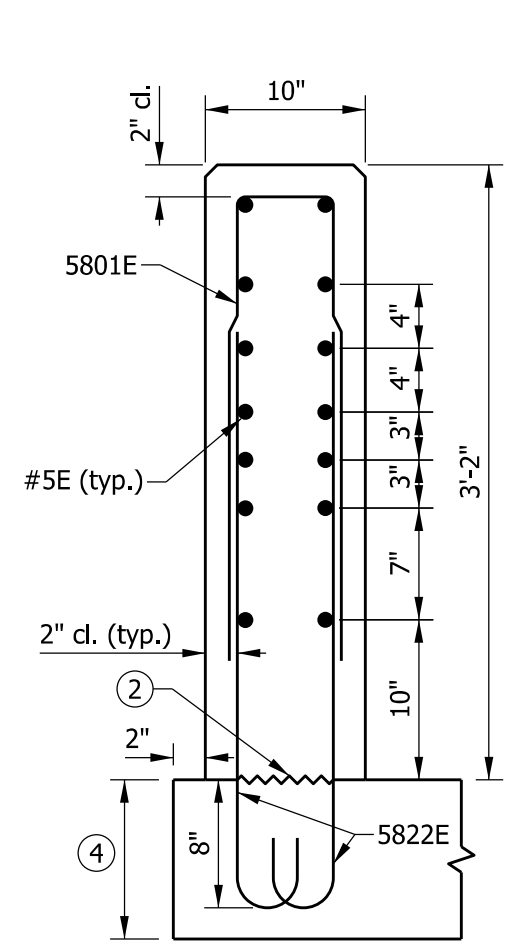

 DESIGN STANDARDS ENGINEER 5/2/2019
 DATE

 CHIEF ENGINEER 6/5/2019
 DATE



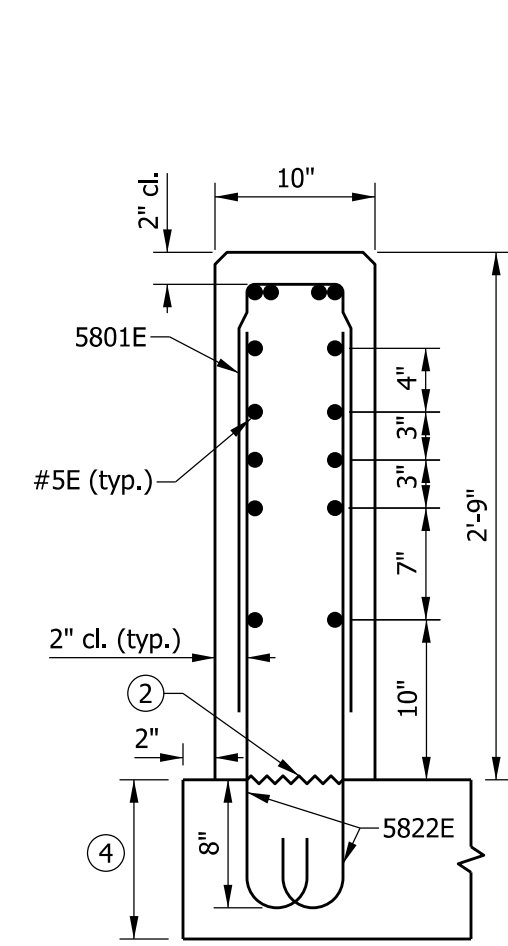
SECTION A-A



SECTION B-B



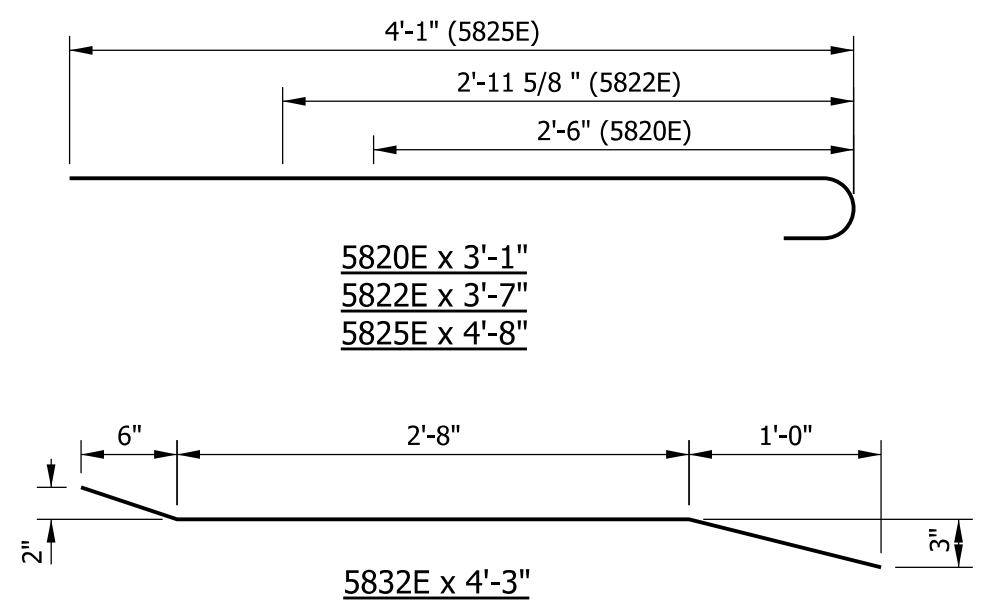
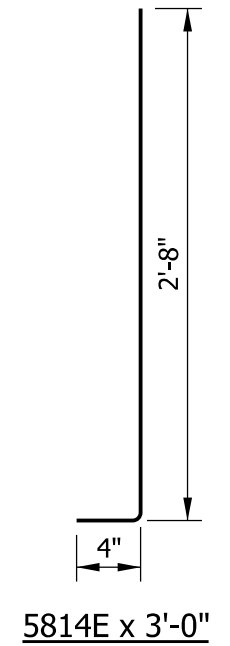
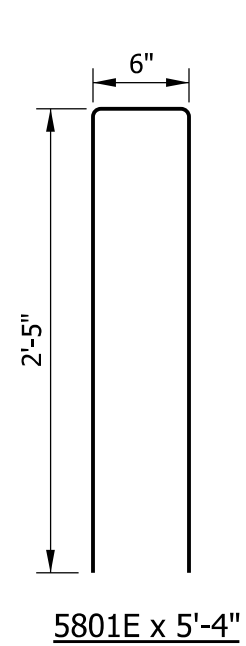
SECTION C-C



SECTION D-D

NOTES:

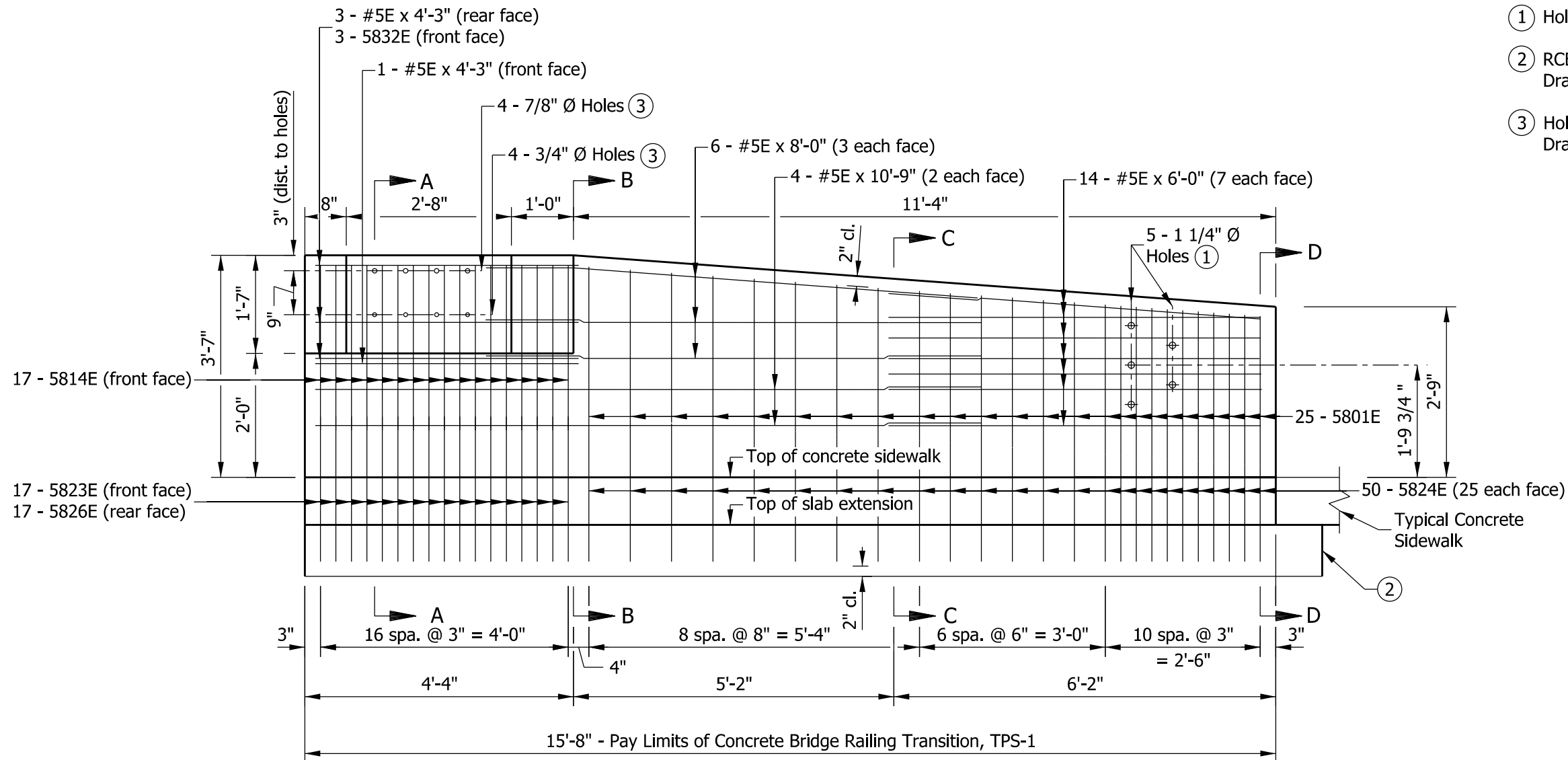
1. All chamfered edges shall be 3/4 in.
2. Construction joint type A. See Standard Drawing E 702-CJTA-01 for details.
3. See Standard Drawing E 703-BRST-01 for reinforcing-bar bending details and notes.
4. RCBA extension for bridge railing transition type TPF-1. See Standard Drawing E 609-TBAE-01 details.
5. 7/8 in. diameter hole for attachment of steel bridge railing type PF-1, large rail. See Standard Drawing E 706-BRPP-02 for details.
6. 3/4 in. diameter hole for attachment of steel bridge railing type PF-1, small rail. See Standard Drawing E 706-BRPP-02 for details.



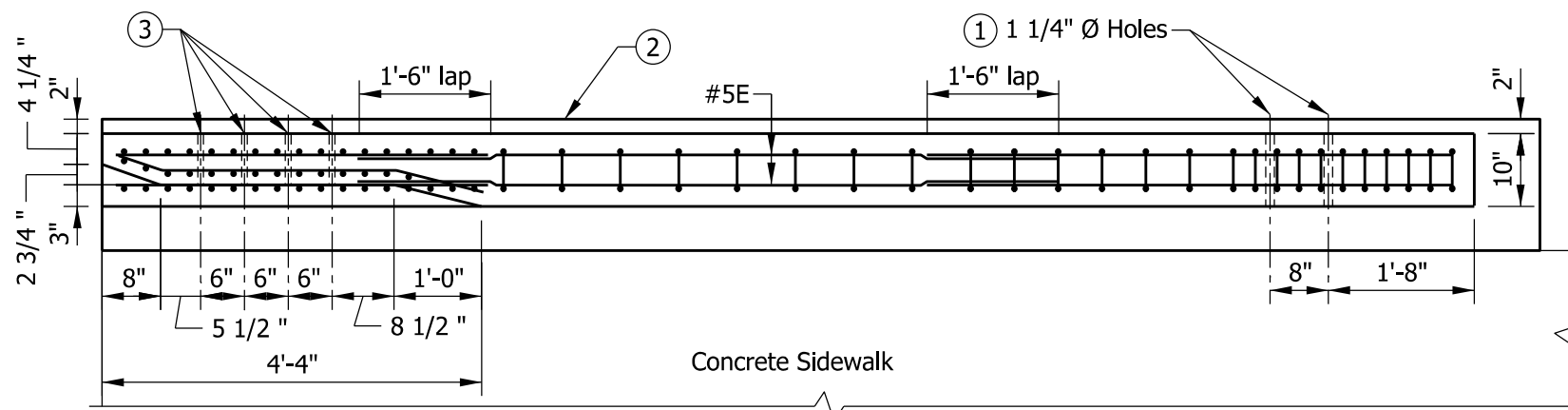
INDIANA DEPARTMENT OF TRANSPORTATION	
CONCRETE BRIDGE RAILING TRANSITION, TPF-1 SECTIONS AND REINFORCING BAR BENDING DETAILS SEPTEMBER 2019	
STANDARD DRAWING NO. E 706-TTPP-03	
	 DESIGN STANDARDS ENGINEER 5/2/2019 DATE
 CHIEF ENGINEER 6/5/2019 DATE	

NOTES:

- ① Holes for attachment of guardrail transaction.
- ② RCBA extension for bridge railing transition type TPS-1. See Standard Drawing E 609-TBAE-01 for details.
- ③ Holes for attachment of steel bridge railing type PS-1. See Standard Drawing E 706-BRPP-03 for details.



ELEVATION



PLAN

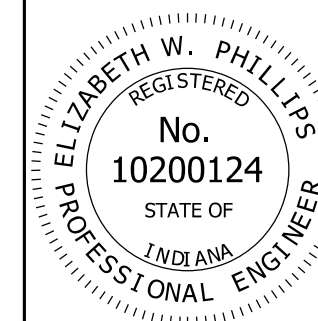
BILL OF MATERIALS			
Quantities are for one concrete bridge railing transition type TPS-1.			
EPOXY COATED REINFORCING BARS			
MARK OR SIZE	NO. OF BARS	LENGTH	WEIGHT
5801E	25	5'-4"	
5814E	17	3'-0"	
5823E	17	3'-9"	
5824E	50	4'-3"	
5826E	17	5'-4"	
5832E	3	4'-3"	
#5E	4	10'-9"	
#5E	6	8'-0"	
#5E	14	6'-0"	
#5E	4	4'-3"	
Total Epoxy Coated Reinforcing Bars			789 LBS
MISCELLANEOUS			
Concrete, Class C			1.9 CYS
Surface Seal			131 SFT



INDIANA DEPARTMENT OF TRANSPORTATION

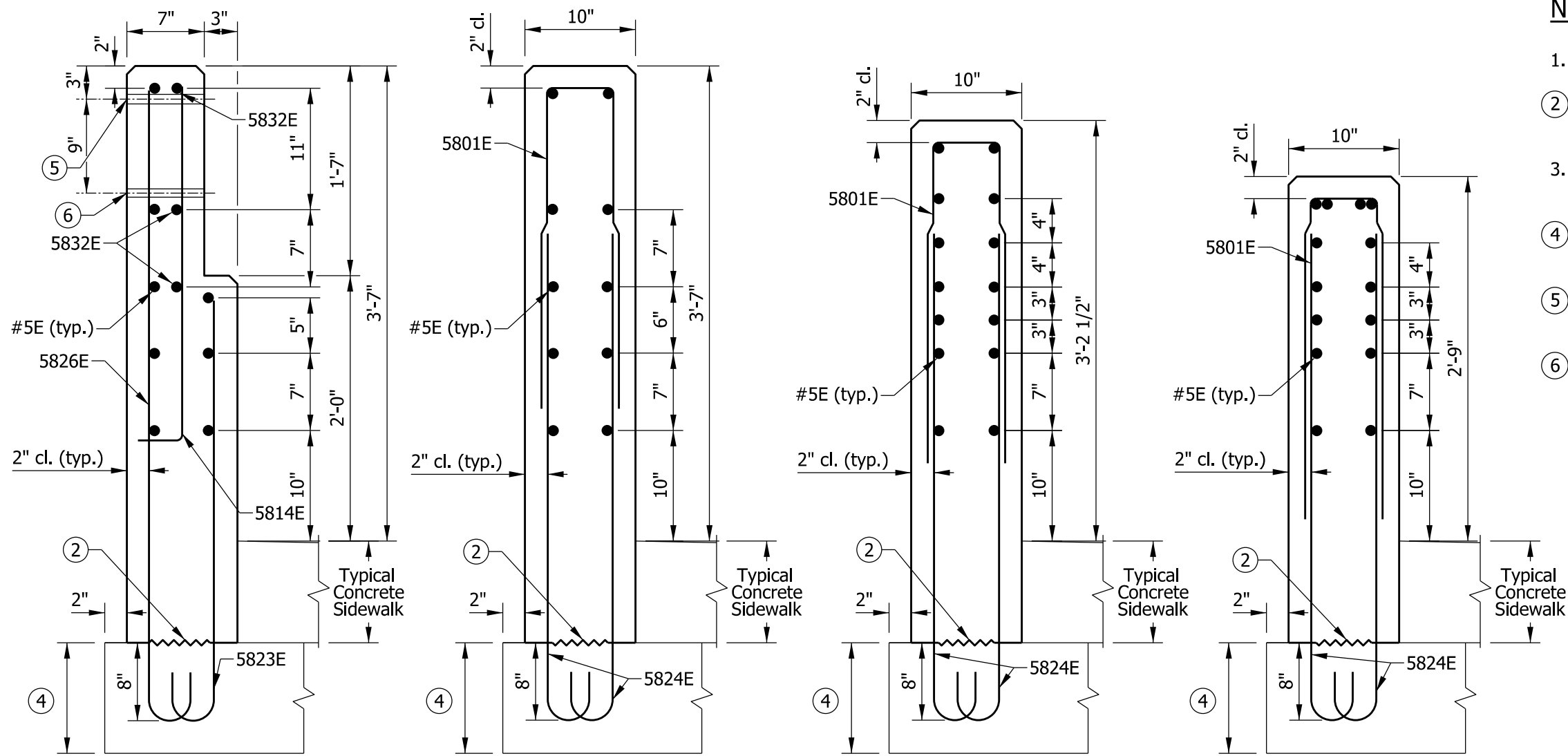
CONCRETE BRIDGE RAILING TRANSITION, TPS-1 PLAN AND ELEVATION

SEPTEMBER 2019

STANDARD DRAWING NO. E 706-TTPP-04




 DESIGN STANDARDS ENGINEER 5/2/2019
 DATE

 CHIEF ENGINEER 6/5/2019
 DATE



NOTES:

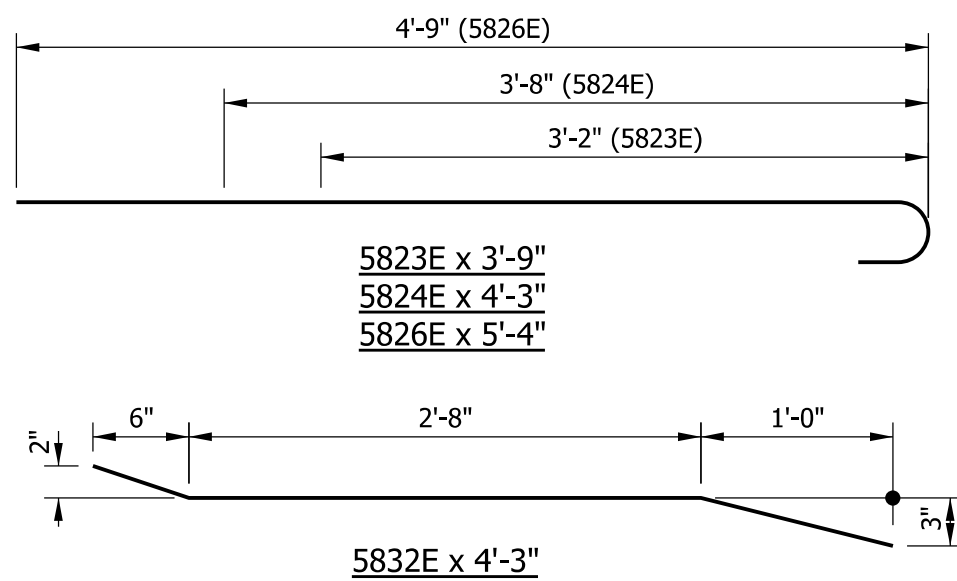
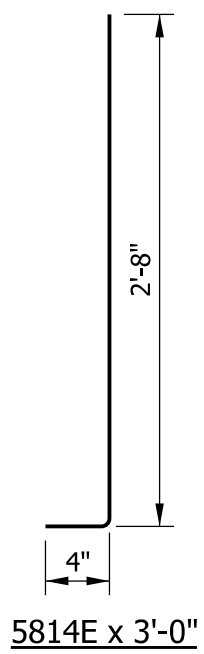
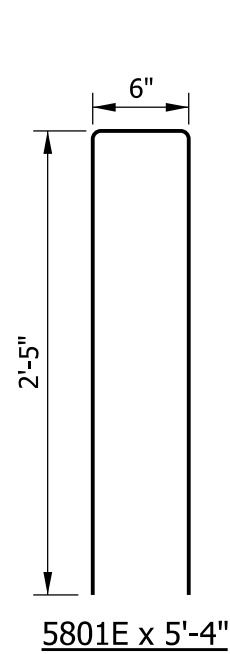
1. All chamfered edges shall be 3/4 in.
- 2 Construction joint type A. See Standard Drawing E 702-CJTA-01 for details.
3. See Standard Drawing E 703-BRST-01 for reinforcing-bar bending details and notes.
- 4 RCBA extension for bridge railing transition type TPS-1. See Standard Drawing E 609-TBAE-01 for details.
- 5 7/8 in. diameter hole for attachment of steel bridge railing type PS-1, large rail. See Standard Drawing E 706-BRPP-03 for details.
- 6 3/4 in. diameter hole for attachment of steel bridge railing type PS-1, small rail. See Standard Drawing E 706-BRPP-03 for details.

SECTION A-A

SECTION B-B

SECTION C-C

SECTION D-D



INDIANA DEPARTMENT OF TRANSPORTATION	
CONCRETE BRIDGE RAILING TRANSITION, TPS-1 SECTIONS AND REINFORCING BAR BENDING DETAILS	
SEPTEMBER 2019	
STANDARD DRAWING NO.	E 706-TTPP-05
	<p style="text-align: right;"><i>Elizabeth W. Phillips</i> DESIGN STANDARDS ENGINEER 5/2/2019 DATE</p> <p style="text-align: right;"><i>[Signature]</i> CHIEF ENGINEER 6/5/2019 DATE</p>