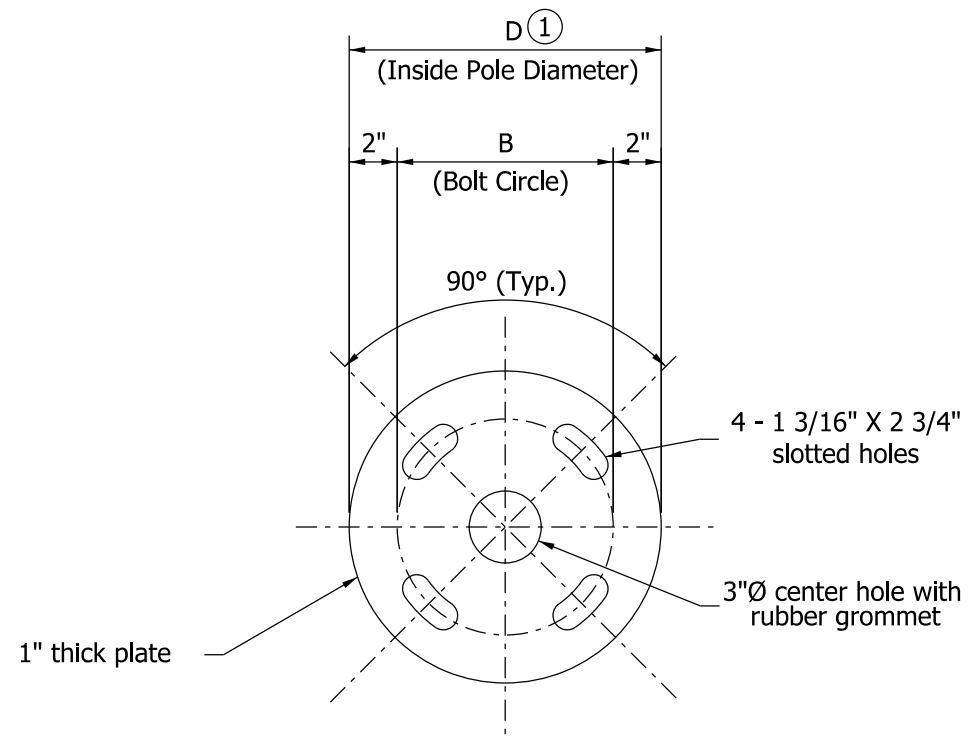
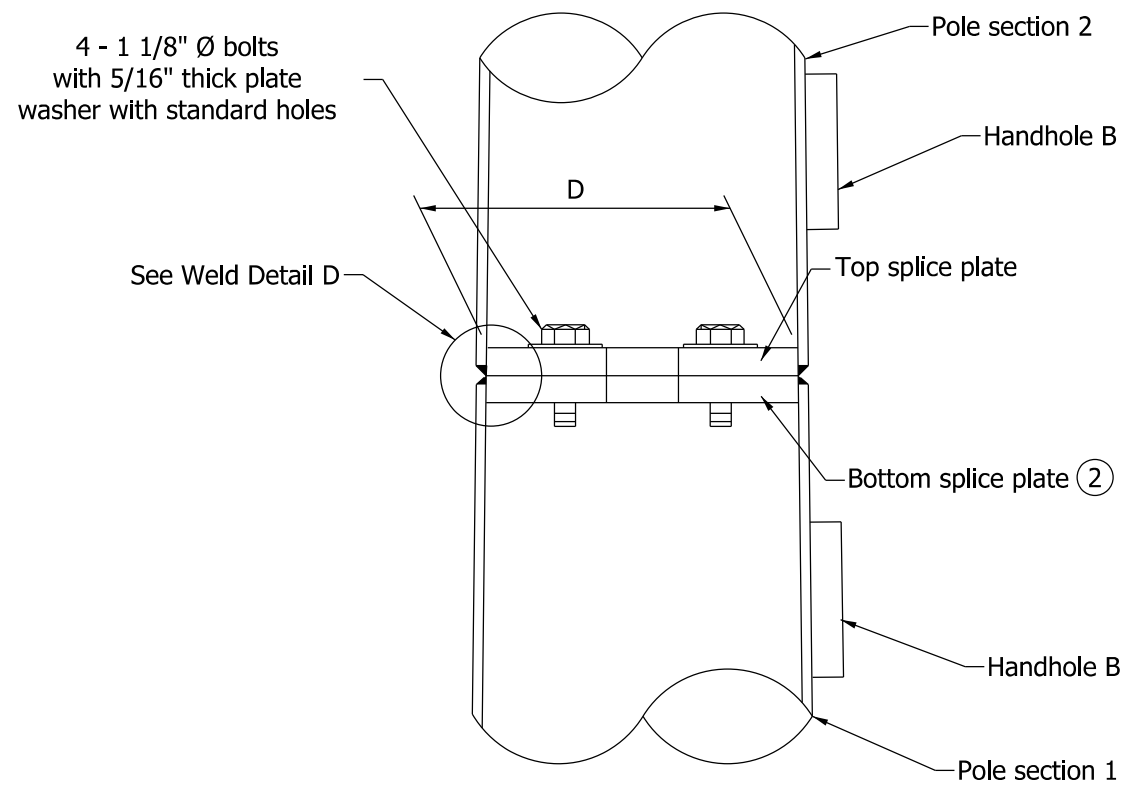


WELD DETAIL D



TOP SPLICE PLATE



ELEVATION

NOTES:

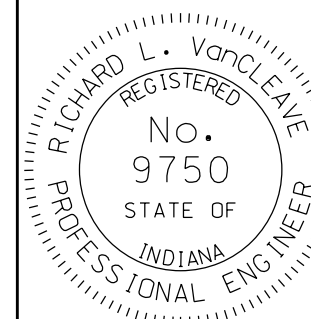
- ① See Standard Drawing E 805-TSCS-08 for pole dimensions.
- ② See Standard Drawings E 805-TSCS-03 and -12 for bottom splice plate details.
3. Diameter at the bottom of Pole Section 2 shall match the diameter at the top of Pole Section 1.

INDIANA DEPARTMENT OF TRANSPORTATION

TRAFFIC SIGNAL CANTILEVER STRUCTURE
COMBINATION POLE SPLICE DETAILS
FOR ARMS 35' OR LESS

SEPTEMBER 2012

STANDARD DRAWING NO. E 805-TSCS-11



/s/ Richard L. VanCleave 09/04/12

SUPERVISOR, ROADWAY STANDARDS DATE

/s/ Mark A. Miller 09/04/12

CHIEF ENGINEER DATE