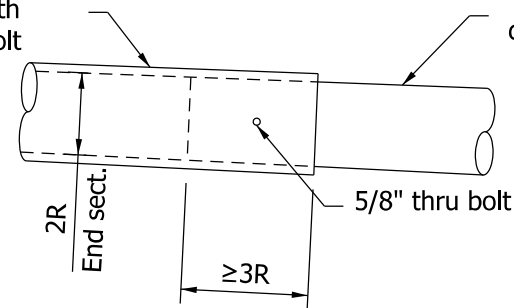


## ELEVATION

### NOTES:

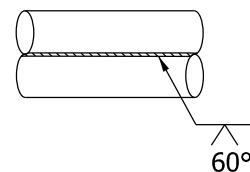
- ① Number of cable inlets depends on L. See Arm Dimensions Table. The inlet diameter shall be 1 3/4" with rubber grommet (typ.).
- ② Optional splice can be used for arm length of greater than 40 ft. Field assembly shall achieve a snug tight joint having overlap not less than 1.5 times the inside dimension of the end section.
- ③ Arm rise R is measured in the undeflected position without vertical loads on the arm.
- ④ See Standard Drawing E 805-TSCS-05 for handhole details.
- ⑤ If seam welds are used, the weld location for the arms shall be along the bottom, and on the side of the pole as shown.

End section extension with wall thickness 1/8" and with drilled hole for 5/8" bolt



Base section with wall thickness 5/16" and field drilled hole for 5/8" bolt with curved washer and lock nut

### ② OPTIONAL ARM SPLICE DETAIL



### ⑤ TYPICAL SEAM WELD

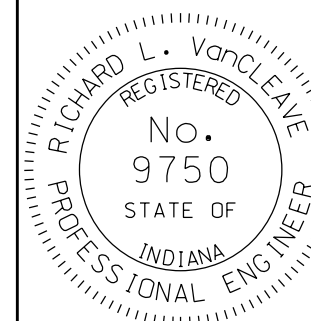
| ARM DIMENSIONS TABLE |                      |                    |            |                   |
|----------------------|----------------------|--------------------|------------|-------------------|
| L                    | ARM DIAMETER AT POLE | ARM WALL THICKNESS | R<br>③     | CABLE INLETS<br>① |
| 15'                  | 5 1/2"               | 1/8"               | 7 1/2"     | A                 |
| 20'                  | 5 1/2"               | 1/8"               | 10"        | A                 |
| 25'                  | 7"                   | 1/8"               | 1'-0 1/2"  | A                 |
| 30'                  | 8"                   | 1/8"               | 1'-3"      | A, B              |
| 35'                  | 8"                   | 1/8"               | 1'-5 1/2"  | A, B              |
| 40'                  | 9"                   | 1/8"               | 1'-8"      | A, B, C           |
| 45'                  | 10"                  | 1/8"               | 1'-10 1/2" | A, B, C           |
| 50'                  | 11"                  | 1/8"               | 2'-1"      | A, B, C           |
| 55'                  | 11"                  | 1/8"               | 2'-3 1/2"  | A, B, C           |
| 60'                  | 12"                  | 1/8"               | 2'-6"      | A, B, C           |

## INDIANA DEPARTMENT OF TRANSPORTATION

### TRAFFIC SIGNAL CANTILEVER STRUCTURE COMBINATION ARM DIMENSIONS & DETAILS

SEPTEMBER 2012

STANDARD DRAWING NO. E 805-TSCS-09



/s/ Richard L. VanCleave 09/04/12

SUPERVISOR, ROADWAY STANDARDS DATE

/s/ Mark A. Miller 09/04/12

CHIEF ENGINEER DATE