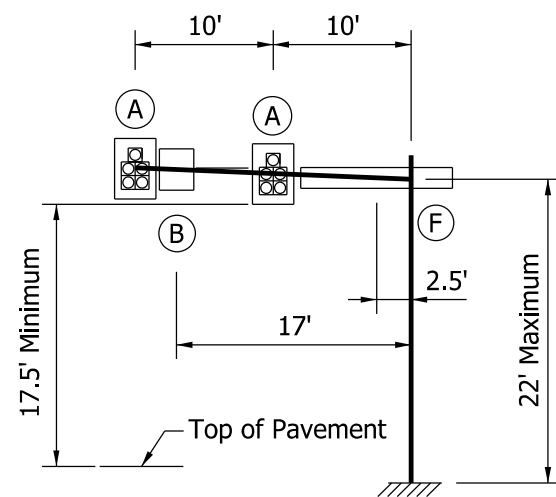
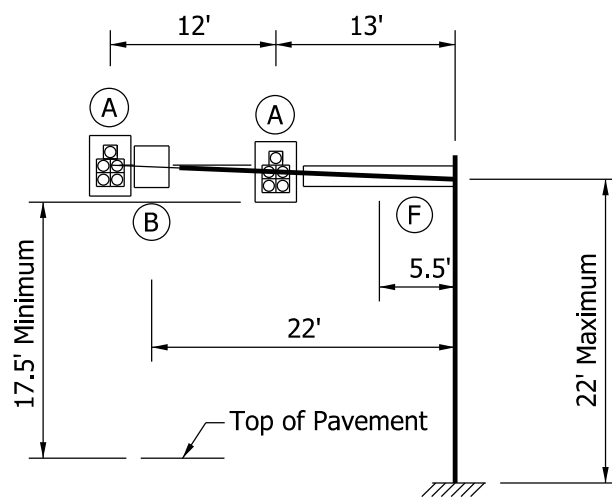


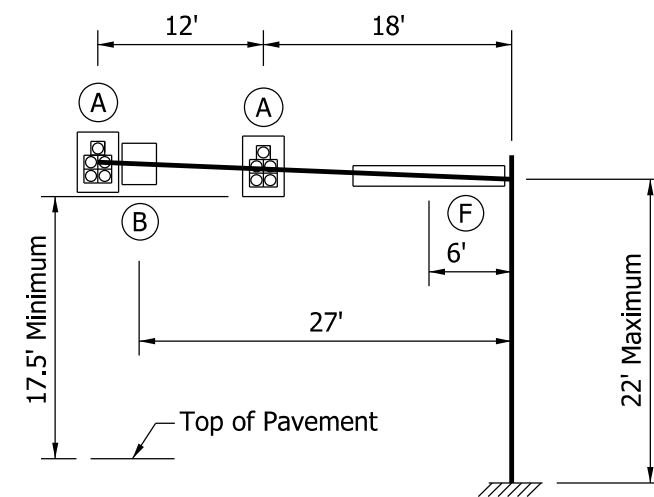
15' ARM



20' ARM



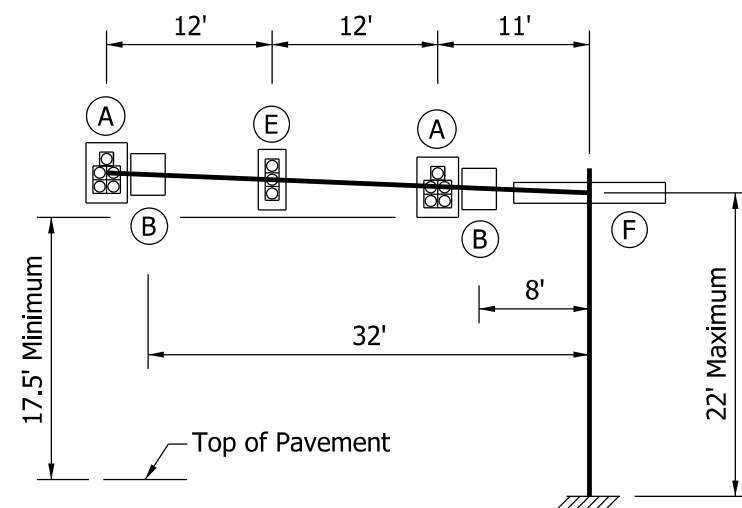
25' ARM



30' ARM

NOTE:

1. The structure arms and pole are designed for the above loading conditions. Foundation types A and C are designed for arms having length of 35 ft or less. See Standard Drawings E 805-TSCS-15 and -17 for foundation types A and C.



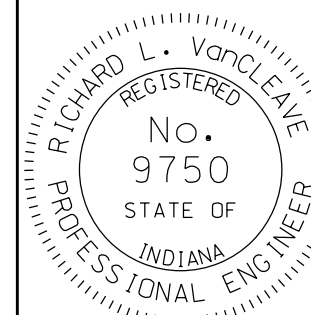
35' ARM

LEGEND	
Device	Description
(A)	12" - 5 Section Signal Head With Backplates
(B)	36" x 30" Regulatory Sign
(C)	18" x 96" Street Name Sign
(E)	12" - 3 Section Signal Head With Backplates
(F)	18" x 132" Street Name Sign

INDIANA DEPARTMENT OF TRANSPORTATION

**TRAFFIC SIGNAL CANTILEVER STRUCTURE
PLACEMENT OF SIGNALS AND SIGNS
LOADING FOR ARM OF 35' OR LESS
SEPTEMBER 2012**

STANDARD DRAWING NO. E 805-TSCS-06



/s/ Richard L. VanCleave 09/04/12

SUPERVISOR, ROADWAY STANDARDS DATE

/s/ Mark A. Miller 09/04/12

CHIEF ENGINEER DATE