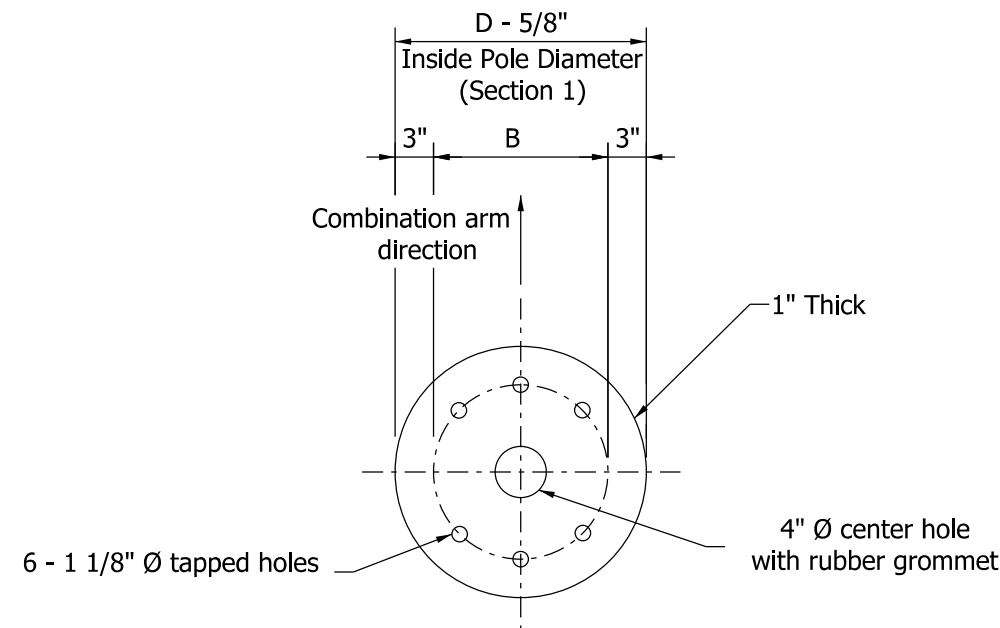
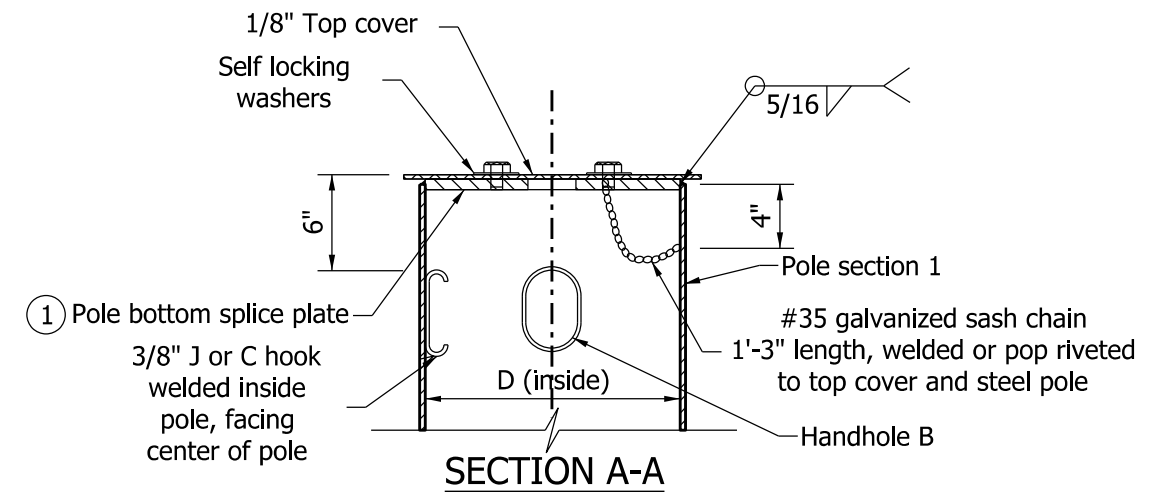
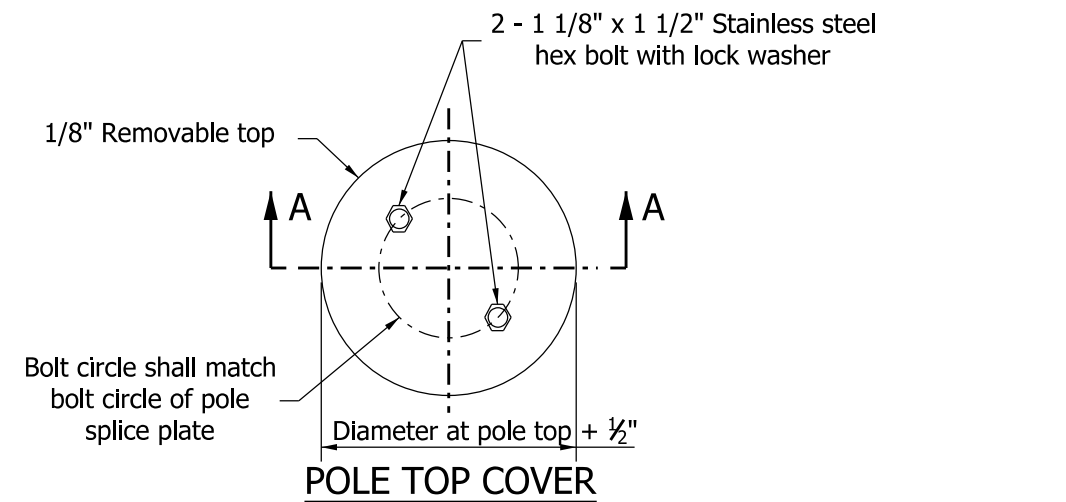


① **BOTTOM SPLICE PLATE**
(For Cantilever Arm Length of 35' or Less)

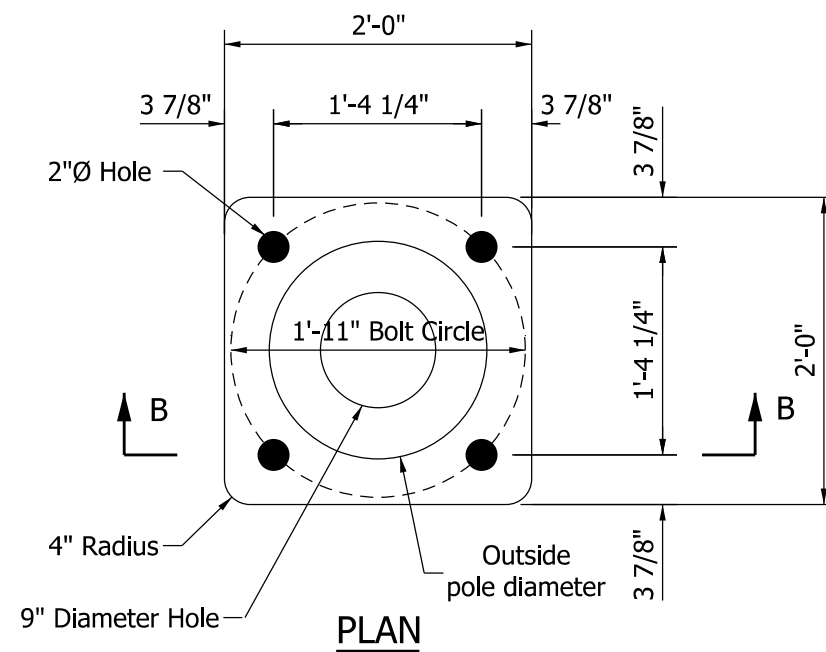


① **BOTTOM SPLICE PLATE**
(For Cantilever Arm Length Greater Than 35' to 60')

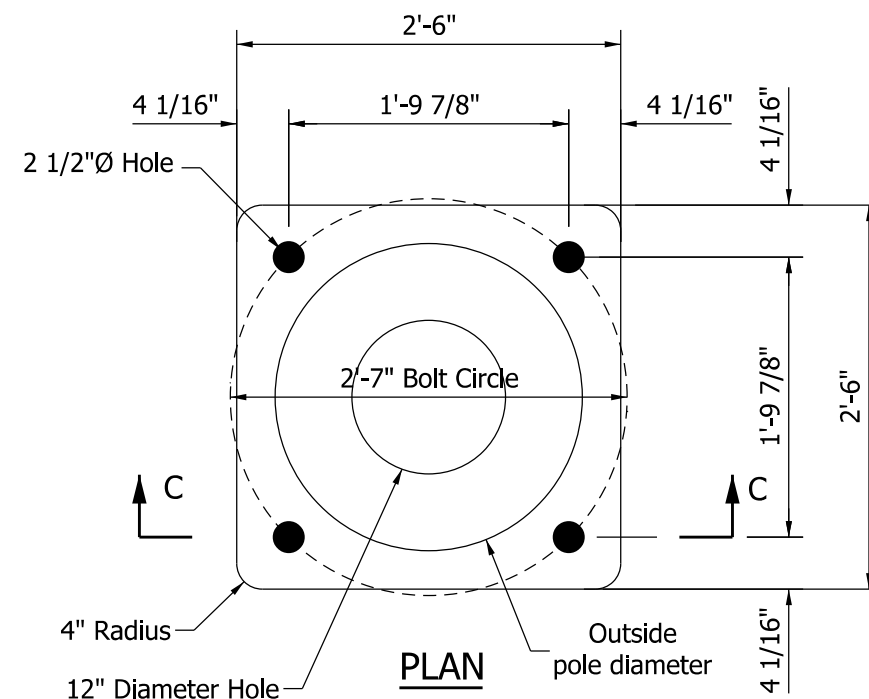
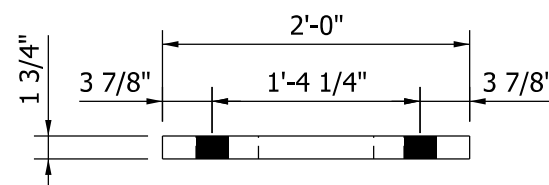


NOTES:

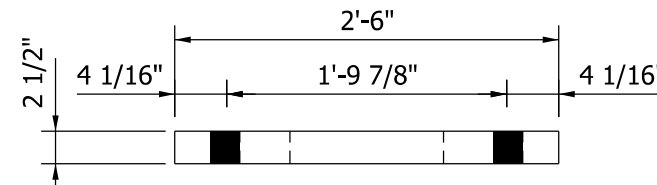
- ① See Standard Drawings E 805-TSCS-11 and -12 for bottom splice details.
2. Bolt circle shall allow clearance for the plate washer. Cutting or trimming the washer will not be allowed.



SECTION B-B
BASE PLATE A



SECTION C-C
BASE PLATE B



INDIANA DEPARTMENT OF TRANSPORTATION			
TRAFFIC SIGNAL CANTILEVER STRUCTURE SIGNAL ARM POLE BASE PLATE, BOTTOM SPLICE PLATES, AND POLE TOP COVER DETAILS SEPTEMBER 2012			
STANDARD DRAWING NO.		E 805-TSCS-03	
	/s/ Richard L. VanCleave		09/04/12
	SUPERVISOR, ROADWAY STANDARDS		DATE
	/s/ Mark A. Miller		09/04/12
	CHIEF ENGINEER		DATE