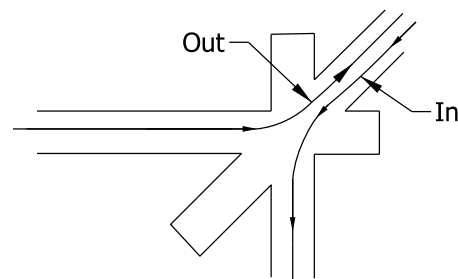
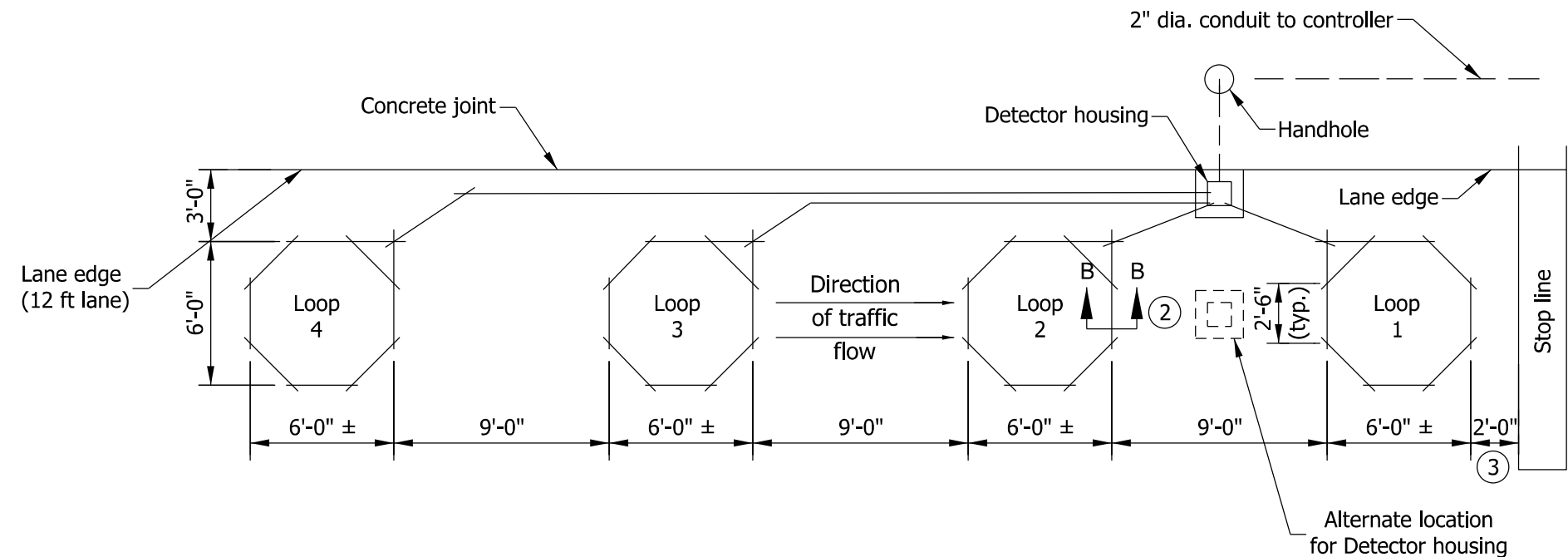
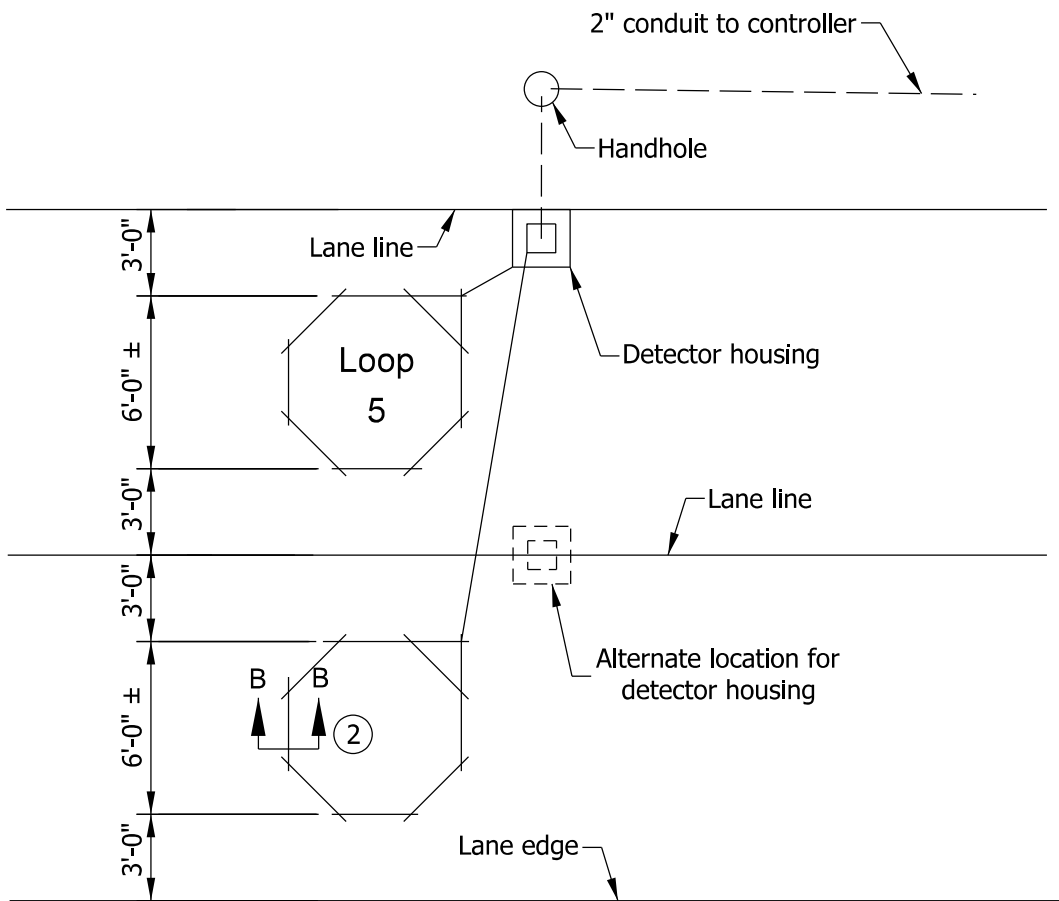


TYPICAL LOOP DETECTION SAW-CUT PLAN (ONE LANE)



TYPICAL LOOP DETECTION (TWO LANES)



NOTES

1. Loop saw-cuts as shown on plan sheets are to be considered as schematic only. In the event of discrepancies, this detail shall govern.
- 2 See Standard Drawing E 805-SGLI-02 for Section B-B.
- 3 This distance is typical depending on the intersection geometrics; a loop can be sawed in front of the stop line.

INDIANA DEPARTMENT OF TRANSPORTATION			
TRAFFIC SIGNAL LOOP INSTALLATION			
SEPTEMBER 2012			
STANDARD DRAWING NO.		E 805-SGLI-01	
	/s/ Richard L. VanCleave		09/04/12
	SUPERVISOR, ROADWAY STANDARDS		DATE
	/s/ Mark A. Miller		09/04/12
	CHIEF ENGINEER		DATE