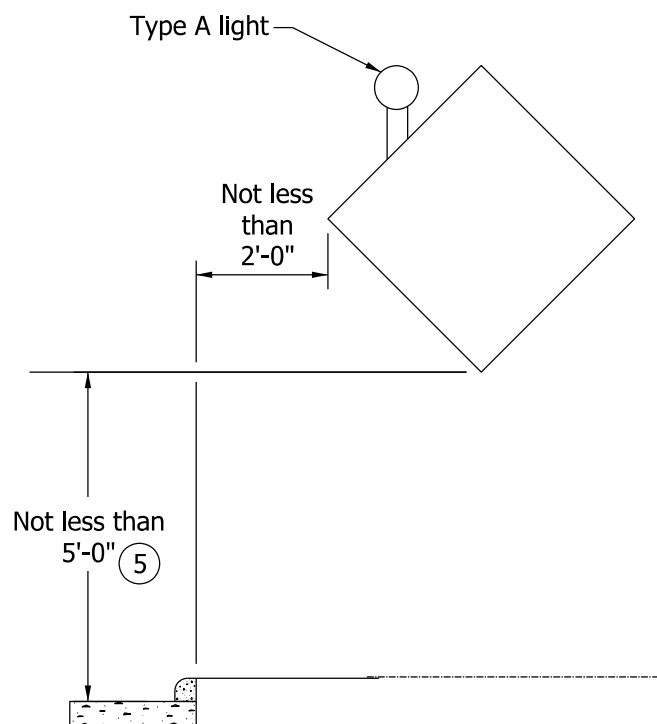
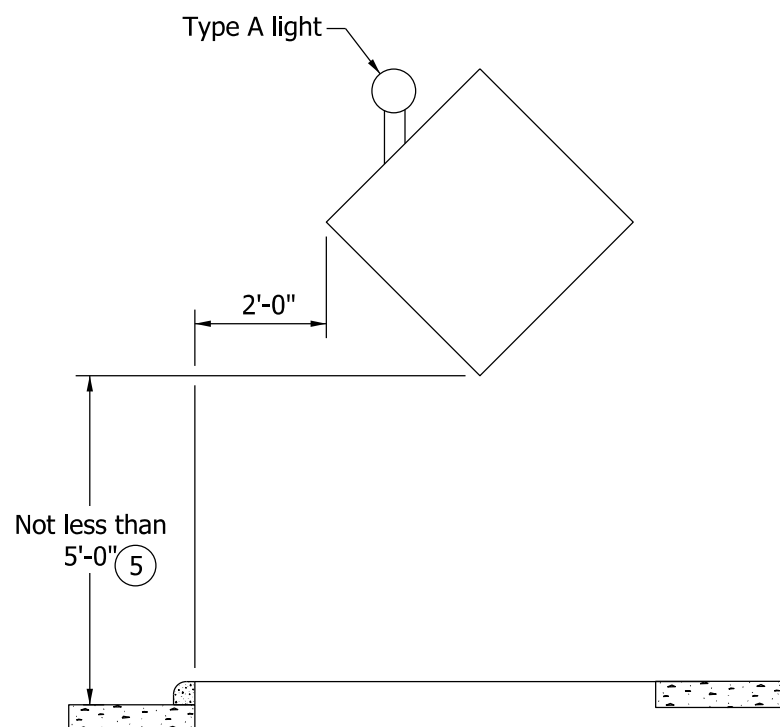
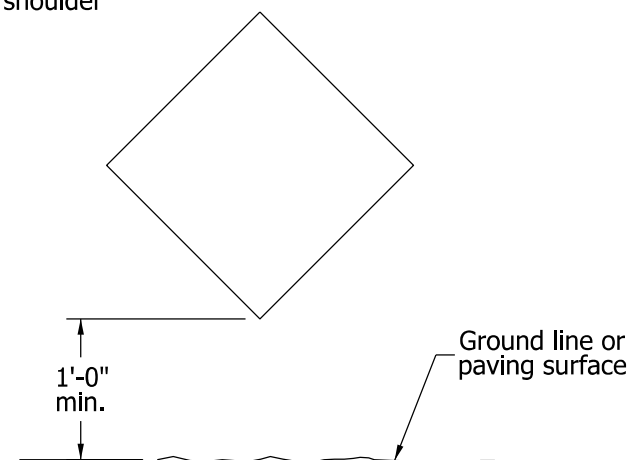


UN-CURBED ROADWAY



CURBED ROADWAY



TEMPORARY MOUNTED CONSTRUCTION SIGN

NOTES:

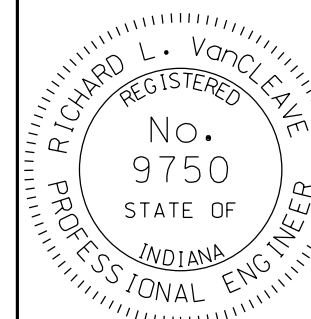
- See Standard Drawing E 801-TCSN-11 for additional notes.
- Signs, lights, and supports shall satisfy NCHRP 350 crash evaluation criteria.
- An advisory speed plaque, required to be placed with another construction sign, may be mounted on the post closest to the roadway at a height not less than 4 ft above the edge of pavement adjacent to the sign. The bottom of the construction warning sign shall not be lower than the top of the advisory speed plaque.
- Type A warning light required on all construction signs.
- In urban area or on Interstate route, mounting height shall not be less than 7 ft.

INDIANA DEPARTMENT OF TRANSPORTATION

TYPICAL CONSTRUCTION SIGNS MOUNTING

SEPTEMBER 2002

STANDARD DRAWING NO. E 801-TCDV-05



DETAILS PLACED IN THIS FORMAT 09/04/12

/s/ Richard L. VanCleave 09/04/12

SUPERVISOR, ROADWAY STANDARDS DATE

/s/ Mark A. Miller 09/04/12

CHIEF ENGINEER DATE