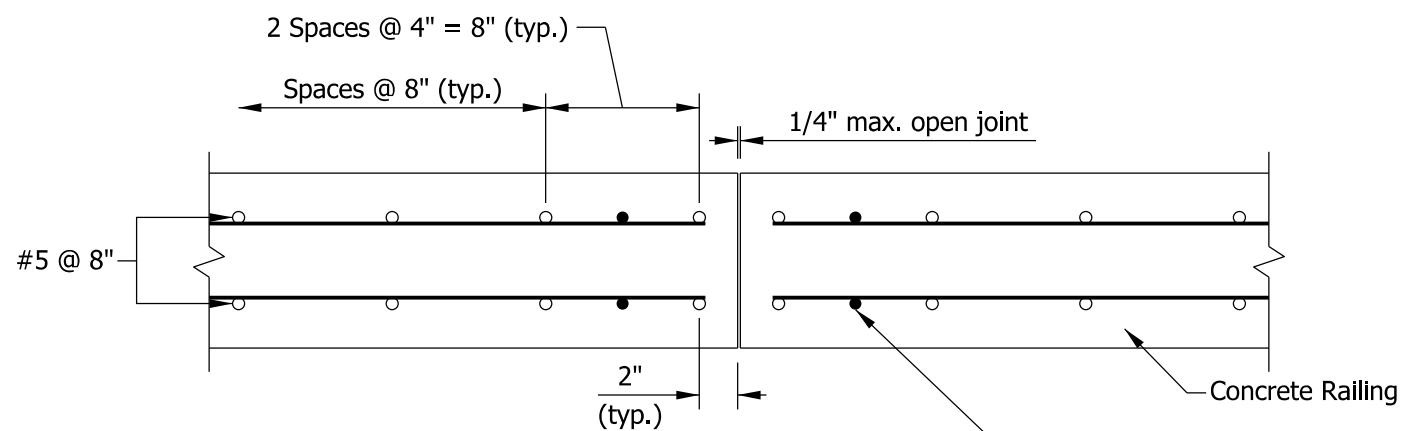


PLAN - REINFORCED CONCRETE MOMENT SLAB JOINTS



**PLAN - CONCRETE RAILING
ADDITIONAL VERTICAL STEEL**

NOTES

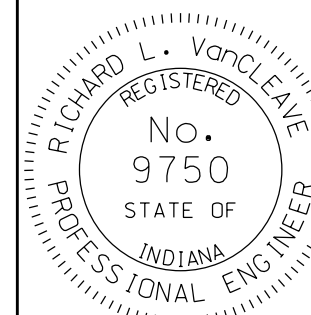
1. Where used with HMA mainline pavement, concrete railing and moment-slab lengths shall coincide and be spaced at 18'-0".
- ② See Standard Drawing E 503-CCPJ-01 for contraction joint type D-1 details.
- ③ See Standard Drawing E 503-CCPJ-02 for joint tie bars details.

INDIANA DEPARTMENT OF TRANSPORTATION

MOMENT SLAB JOINTS

SEPTEMBER 2012

STANDARD DRAWING NO. E 706-MSRW-09



/s/ Richard L. VanCleave 09/04/12
SUPERVISOR, ROADWAY STANDARDS DATE

/s/ Mark A. Miller 09/04/12
CHIEF ENGINEER DATE