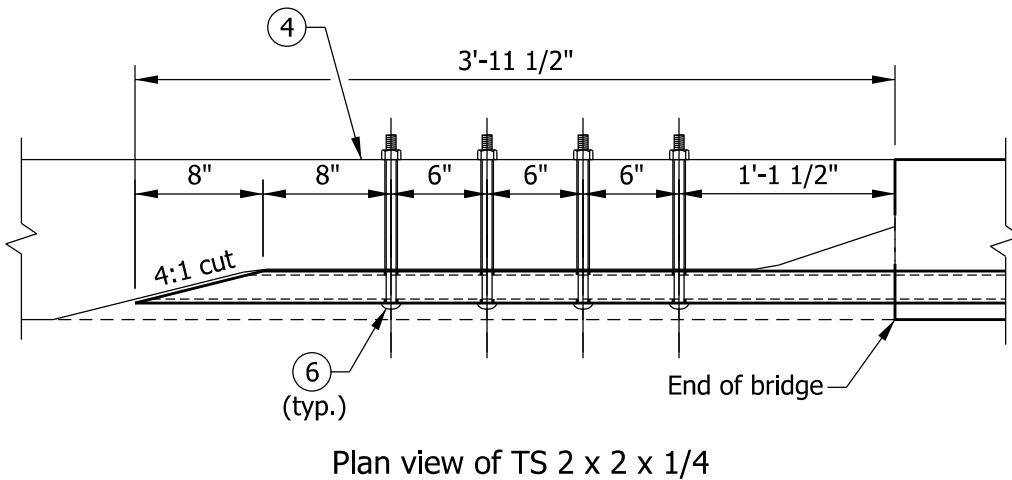
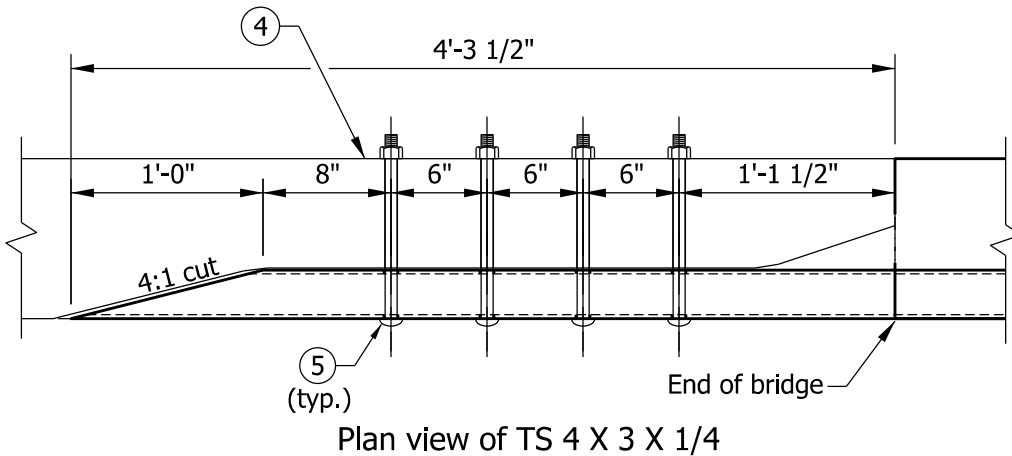


NOTES

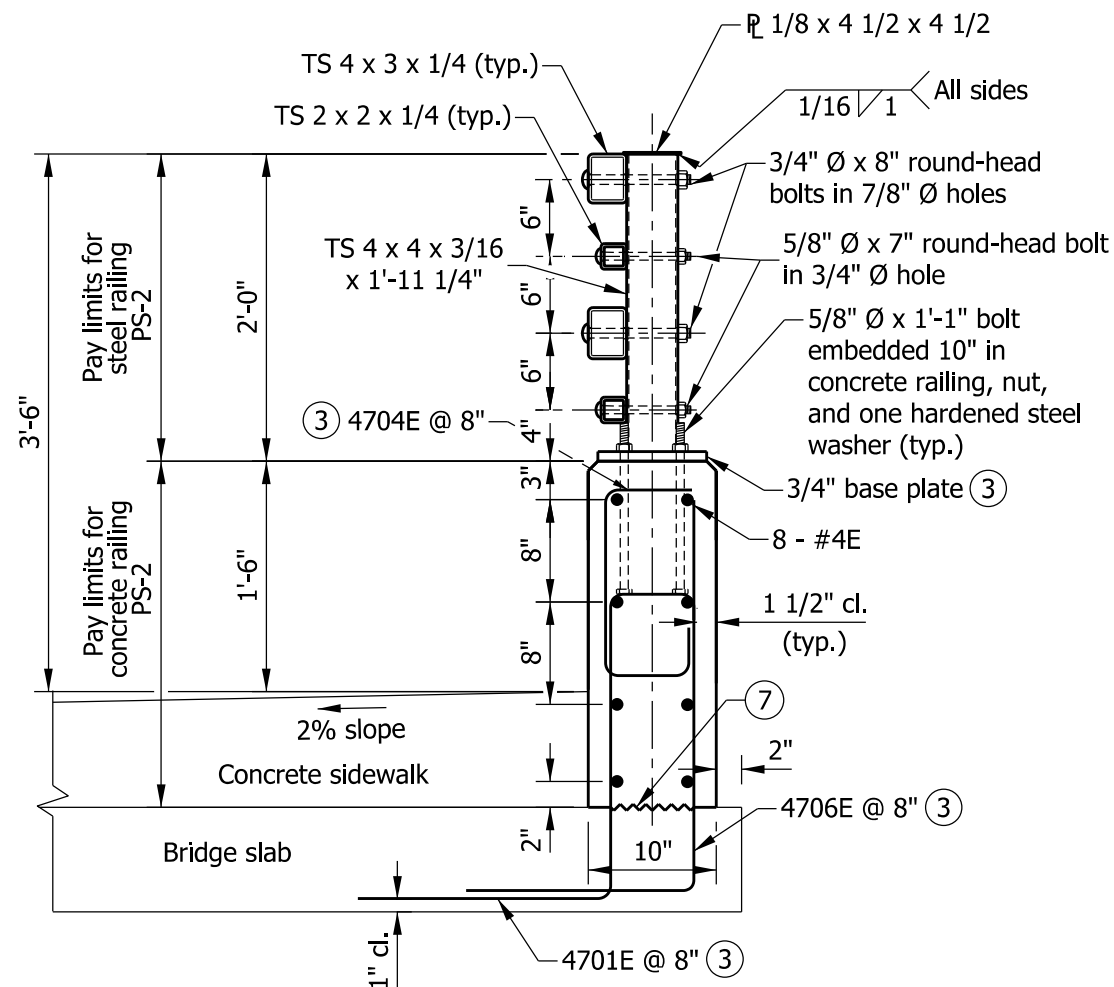
1. See Standard Drawing E 706-BRPP-06 for General Notes (1).
2. See Standard Drawing E 706-BRPP-05 for rail tube details and rail splice details.
3. See Standard Drawing E 706-BRPP-06 for base plate detail and reinforcing-bar bends.
4. Concrete bridge railing transition, TPS-2. See Standard Drawings E 706-TTPP-07 and -08 for details.
5. 3/4" Ø x 11 1/2" round-head bolt in 7/8" Ø hole. Hole shall be slotted as required for expansion.
6. 5/8" Ø x 10 1/2" round-head bolt in 3/4" Ø hole. Hole shall be slotted as required for expansion.
7. Construction joint type A. See Standard Drawing E 702-CJTA-01 for details.



RAIL END DETAILS

QUANTITIES FOR ONE RUNNING FOOT OF RAILING

Concrete, class C	1.89 CFT
Reinforcing bars	16.8 LBS

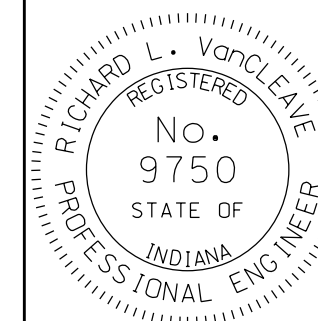


INDIANA DEPARTMENT OF TRANSPORTATION

RAILING, PS-2

SEPTEMBER 2012

STANDARD DRAWING NO. E 706-BRPP-04



/s/ Richard L. VanCleave 09/04/12
SUPERVISOR, ROADWAY STANDARDS DATE

/s/ Mark A. Miller 09/04/12
CHIEF ENGINEER DATE