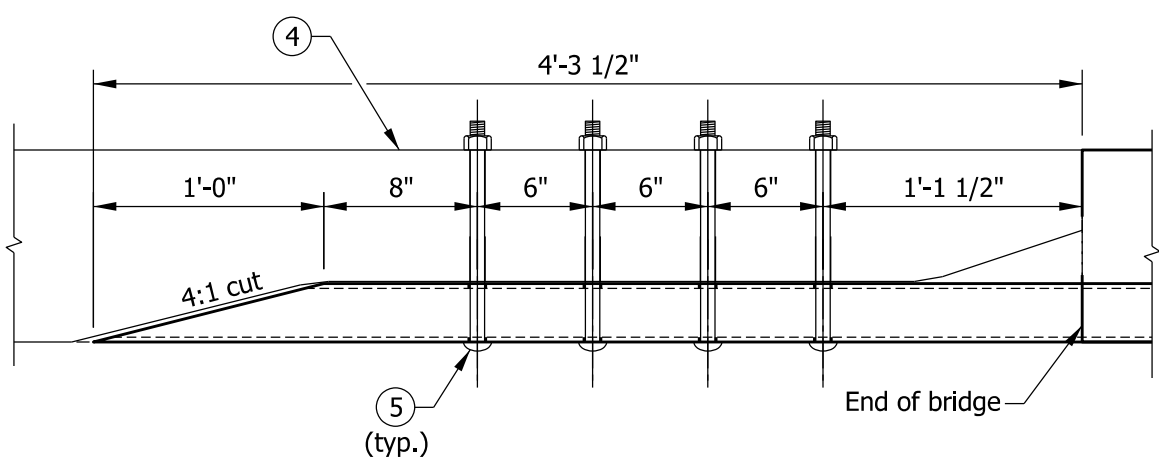
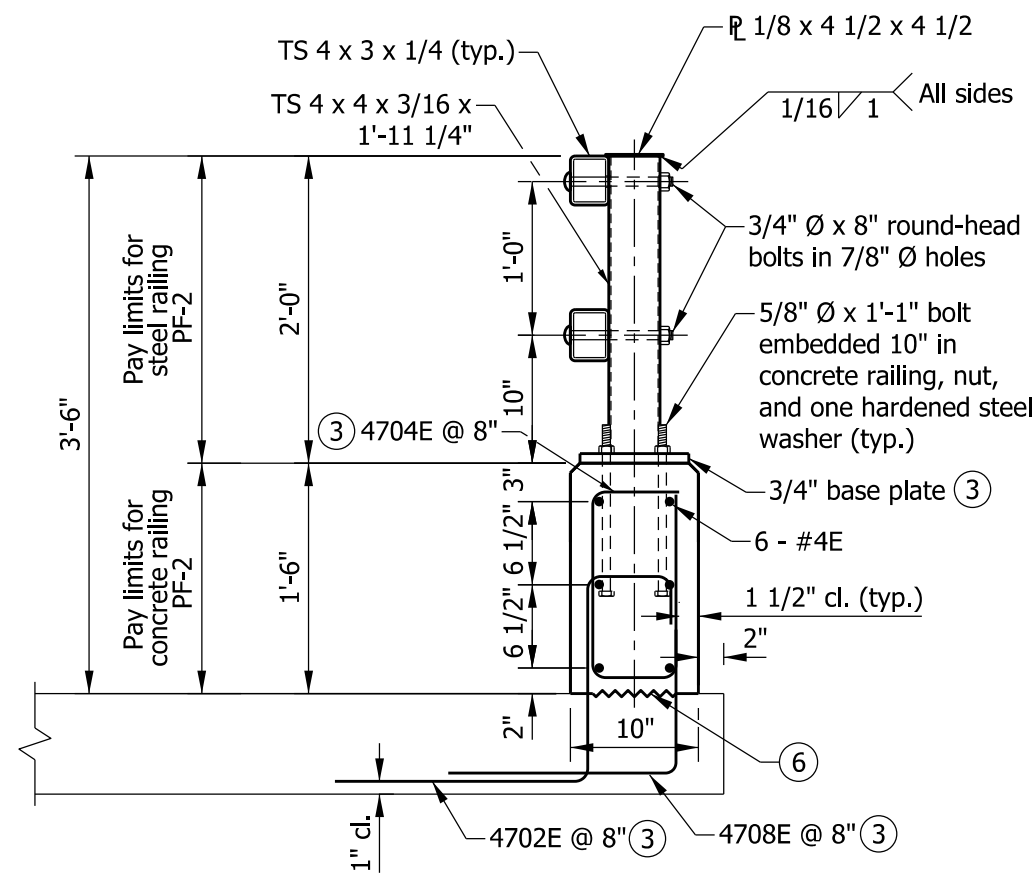


### ELEVATION



Plan view of TS 4 x 3 x 1/4

### RAIL END DETAIL



### TYPICAL SECTION

### NOTES

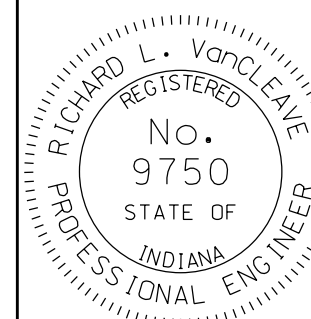
- See Standard Drawing E 706-BRPP-06 for General Notes ①.
- See Standard Drawing E 706-BRPP-05 for rail tube details and rail splice details.
- See Standard Drawing E 706-BRPP-06 for base plate detail and reinforcing-bar bends.
- Concrete bridge railing transition, TPF-2. See Standard Drawings E 706-TTPP-03 and -04 for details.
- 3/4" Ø x 11 1/2" round-head bolt in 7/8" Ø hole. Hole shall be slotted as required for expansion.
- Construction joint type A. See Standard Drawing E 702-CJTA-01 for details.

### INDIANA DEPARTMENT OF TRANSPORTATION

### RAILING, PF-2

SEPTEMBER 2012

STANDARD DRAWING NO. E 706-BRPP-02



/s/ Richard L. VanCleave 09/04/12

SUPERVISOR, ROADWAY STANDARDS DATE

/s/ Mark A. Miller 09/04/12

CHIEF ENGINEER DATE

QUANTITIES FOR ONE RUNNING FOOT OF RAILING	
Concrete, class C	1.25 CFT
Reinforcing bars	14.1 LBS