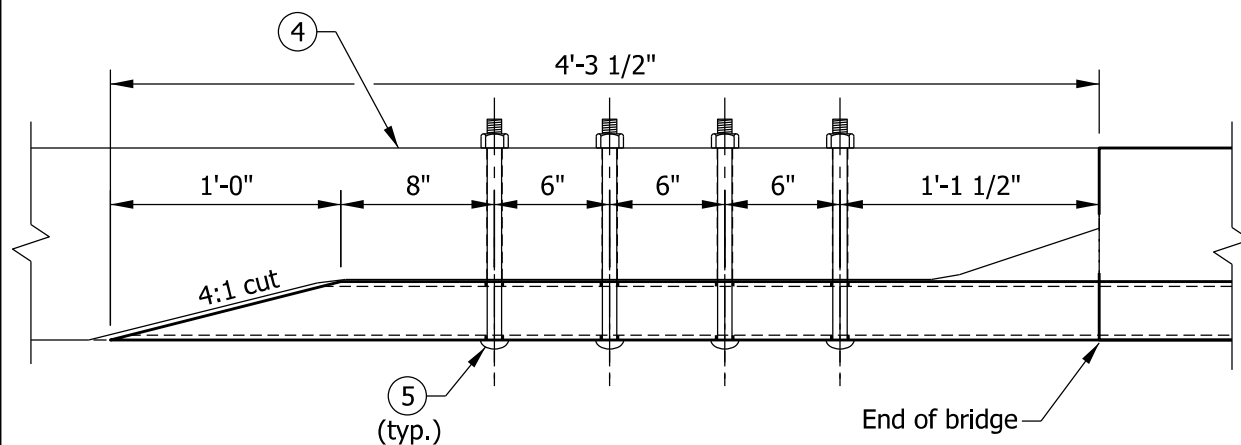


ELEVATION

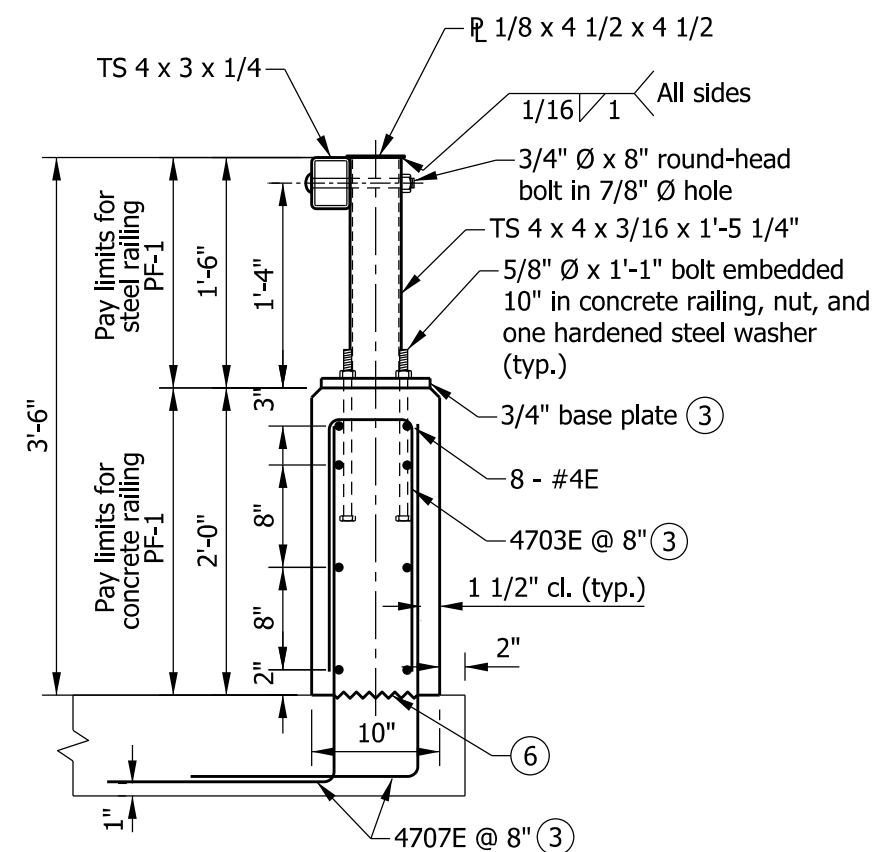
NOTES

1. See Standard Drawing E 706-BRPP-06 for General Notes ①.
- ② See Standard Drawing E 706-BRPP-05 for rail tube details and rail splice details.
- ③ See Standard Drawing E 706-BRPP-06 for base plate detail and reinforcing-bar bends.
- ④ Concrete bridge railing transition, TPF-1. See Standard Drawings E 706-TTPP-01 and -02 for details.
- ⑤ 3/4" Ø x 11 1/2" round-head bolt in 7/8" Ø hole. Hole shall be slotted as required for expansion.
- ⑥ Construction joint type A. See Standard Drawing E 702-CJTA-01 for details.



Plan view of TS 4 x 3 x 1/4

RAIL END DETAIL



TYPICAL SECTION

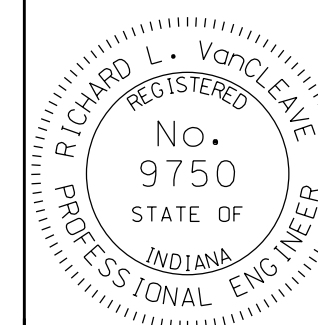
QUANTITIES FOR ONE RUNNING FOOT OF RAILING	
Concrete, class C	1.66 CFT
Reinforcing bars	17.0 LBS

INDIANA DEPARTMENT OF TRANSPORTATION

RAILING, PF-1

SEPTEMBER 2012

STANDARD DRAWING NO. E 706-BRPP-01



/s/ Richard L. VanCleave 09/04/12

SUPERVISOR, ROADWAY STANDARDS DATE

/s/ Mark A. Miller 09/04/12

CHIEF ENGINEER DATE