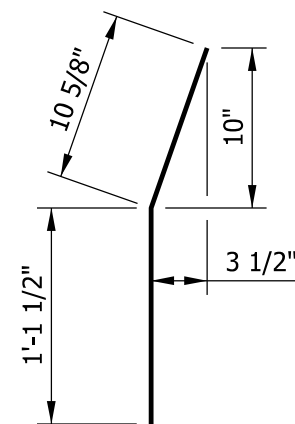


**PAVEMENT LEDGE DETAIL**



**5905 x 2'-0"**

**NOTES**

- ① Joint type 1A. See Standard Drawing E 609-BRJT-01 for details.
- ② See plans for  $t_A$ .
- ③ Flowable backfill if slab bridge.
- 4. All reinforcing bars shall be epoxy coated.
- 5. See Standard Drawing E 703-BRST-01 for reinforcing-bar bending details and notes.

**LEGEND**

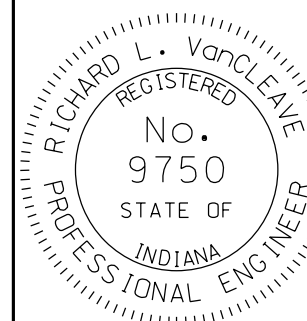
Expanded polystyrene, 1/2" thickness

INDIANA DEPARTMENT OF TRANSPORTATION

REINFORCED CONCRETE BRIDGE APPROACH  
PAVEMENT LEDGE DETAIL

SEPTEMBER 2012

STANDARD DRAWING NO. E 609-RCBA-01



/s/ *Richard L. VanCleave* 09/04/12  
SUPERVISOR, ROADWAY STANDARDS DATE

/s/ *Mark A. Miller* 09/04/12  
CHIEF ENGINEER DATE