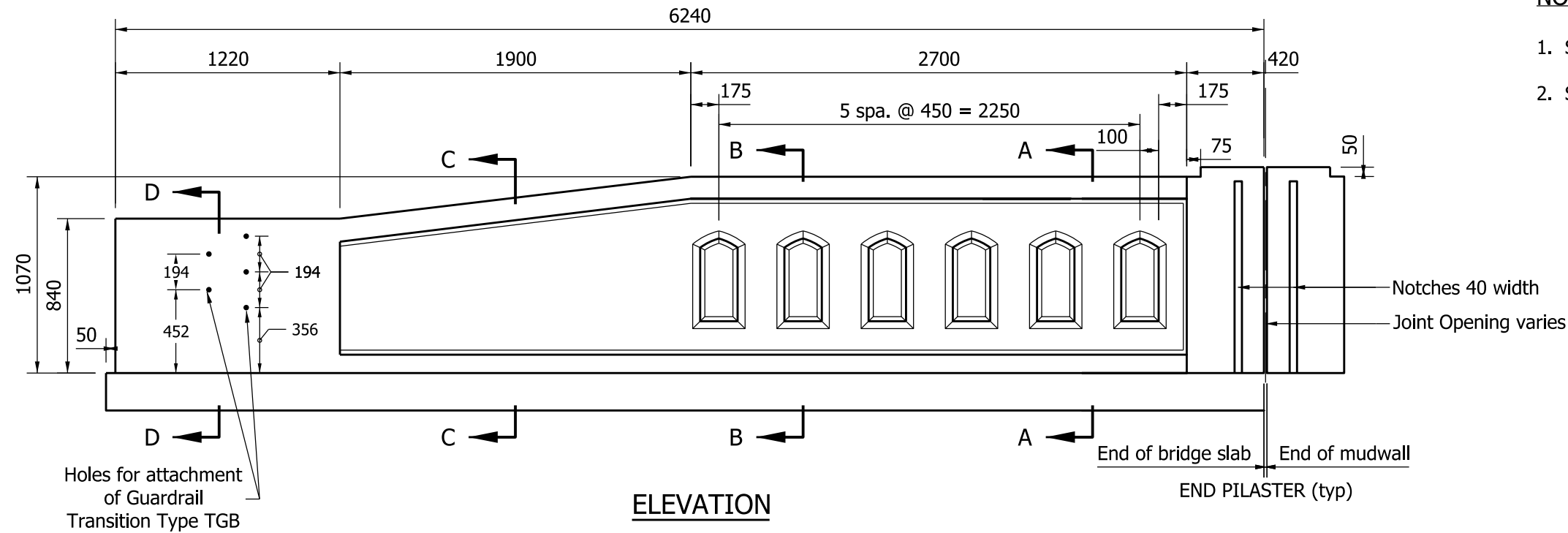
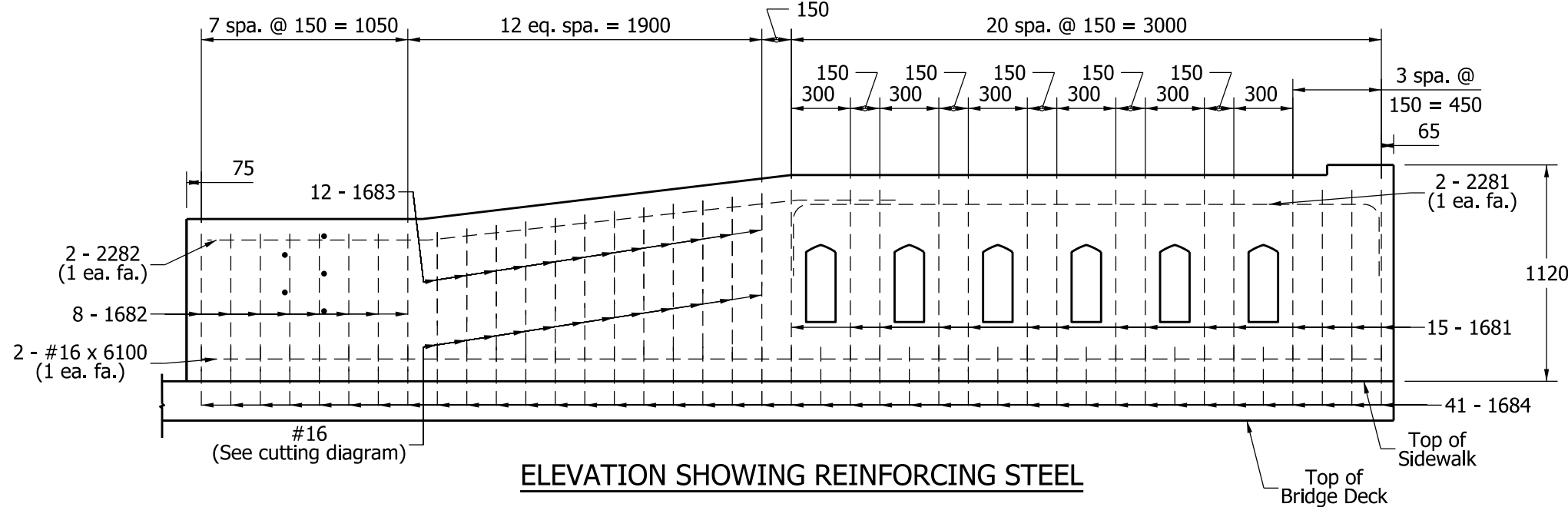


NOTES:

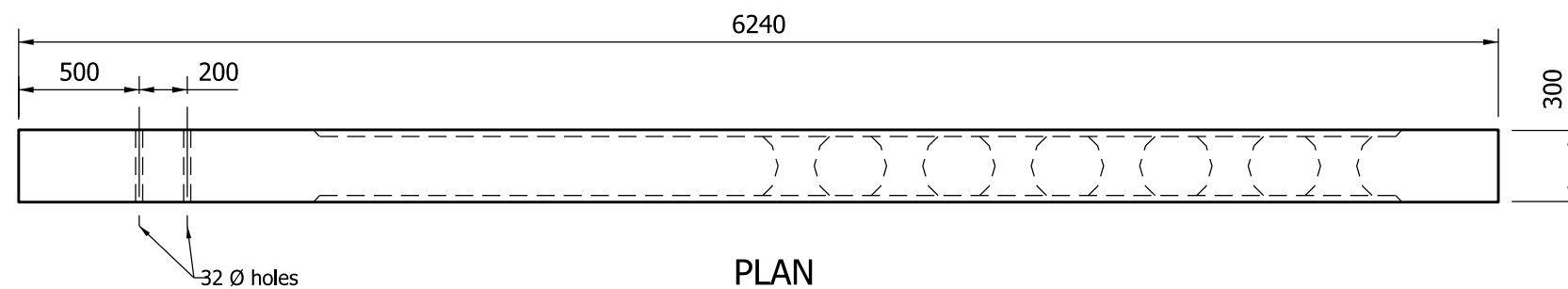
1. See Standard Drawing 706-TTBP-09 for general notes.
2. See Standard Drawing 706-TTTX-02 for sections reinforcing-bar diagrams, and cutting diagrams.
3. The quantities listed in the Bill of Materials are for one transition.
4. See Standard Drawing 706-TTCA-01 for holes placement for terminal connection for attachment.



ELEVATION



ELEVATION SHOWING REINFORCING STEEL



PLAN

BILL OF MATERIALS, TX			
EPOXY-COATED REINFORCING STEEL			
Mark / Size	No. of Bars	Total Length	Mass
2281 x 3760	2	7.52	
2282 x 3560	2	7.12	
Total #22		14.64 m	45 kg
1681 x 2600	15	39	
1682 x 2140	8	17.12	
1683 x 1120	12	13.44	
1684 x 920	41	37.72	
#16 x 6100	2	12.2	
#16 x 1500	6	9	
Total #16		128.48 m	200 kg
Total Epoxy-Coated Reinforcing Steel			245 kg
MISCELLANEOUS			
Concrete, Class C			1.5 m ³
Surface Seal			14 m ²

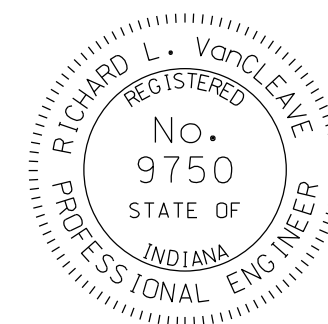
All Dimensions are in mm unless otherwise specified.

INDIANA DEPARTMENT OF TRANSPORTATION

CONCRETE BRIDGE RAILING
TRANSITION, TTX

SEPTEMBER 2011

STANDARD DRAWING NO. 706-TTTX-01



DESIGN STANDARDS ENGINEER

/s/ Richard L. VanCleave 09/01/11
DESIGN STANDARDS ENGINEER DATE

/s/ Mark A. Miller 09/01/11
CHIEF HIGHWAY ENGINEER DATE