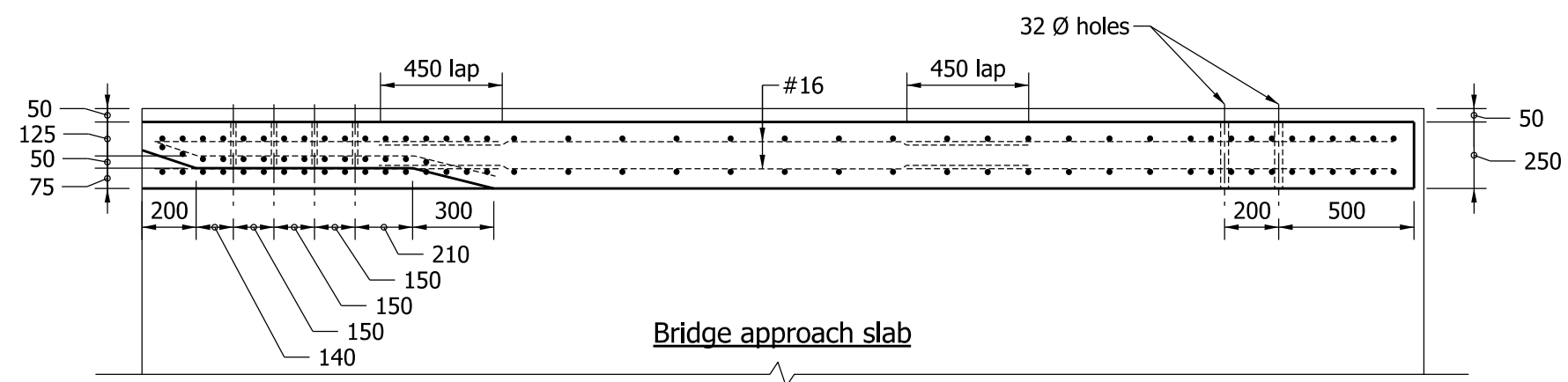


ELEVATION



PLAN

NOTES:

1. See Standard Drawing 706-TTBP-09 for general notes.
2. See Standard Drawing 706-TTBP-06 for sections and reinforcing-bar diagrams.

BILL OF MATERIALS, TPS-1 EPOXY-COATED REINFORCING STEEL			
Mark / Size	No. of Bars	Total Length	Mass
1691 x 1600	25	40	
1692 x 1600	17	27.2	
1693 x 1280	3	3.84	
1694 x 1280	50	64	
1695 x 1140	17	19.38	
1696 x 900	15	13.5	
#16 x 3200	4	12.8	
#16 x 2400	6	14.4	
#16 x 1800	14	25.2	
#16 x 1300	4	5.2	
Total Epoxy-Coated Reinforcing Steel		225.52 m	350 kg
MISCELLANEOUS			
Concrete, Class C			1.2 m ³
Surface Seal			11.5 m ²

All Dimensions are in mm unless otherwise specified.

INDIANA DEPARTMENT OF TRANSPORTATION

CONCRETE BRIDGE RAILING TRANSITION, TPS-1

SEPTEMBER 2011

STANDARD DRAWING NO. 706-TTBP-05

	<i>/s/ Richard L. VanCleave</i> 09/01/11 DESIGN STANDARDS ENGINEER DATE
	<i>/s/ Mark A. Miller</i> 09/01/11 CHIEF HIGHWAY ENGINEER DATE

DESIGN STANDARDS ENGINEER