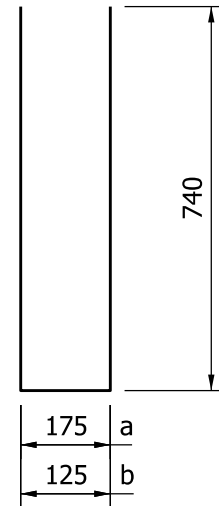


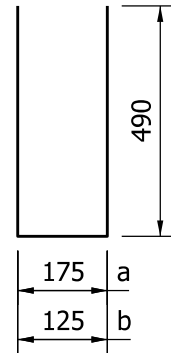
NOTE:

1. See Standard Drawing 706-TASE-05 for General Notes.



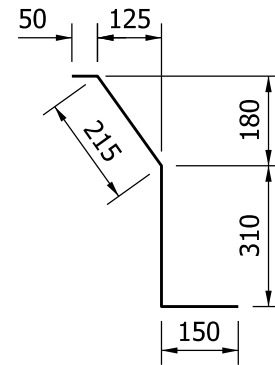
1682a x 1660

1682b x 1610



1684a x 1160

1684b x 1110



1685 x 580

BILL OF MATERIALS			
These quantities are for one concrete bridge railing transition type TBC.			
EPOXY COATED REINFORCING STEEL			
Size and Mark	No. of Bars	Length (mm)	Mass (kg)
1682a	15	1660	
1682b	16	1610	
1684a	15	1160	
1684b	16	1110	
1685	11	580	
#16	13	1800	
#16	7	3300	
Total #16 Bars			215
Total Epoxy Coated Steel			215
Concrete Class C in Railing			1.5 m ³
Surface Seal			11.2 m ²

All Dimensions are in mm unless otherwise specified.

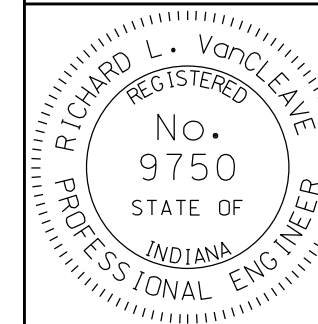
INDIANA DEPARTMENT OF TRANSPORTATION

CONCRETE BRIDGE RAILING
TRANSITION TYPE TBC

SEPTEMBER 2011

STANDARD DRAWING NO. 706-TTBC-03

840 COMMON HEIGHT THRIE BEAM /
CONCRETE BRIDGE RAILING TRANSITION



DESIGN STANDARDS ENGINEER

/s/ Richard L. VanCleave 09/01/11
DESIGN STANDARDS ENGINEER DATE

/s/ Mark A. Miller 09/01/11
CHIEF HIGHWAY ENGINEER DATE