
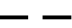
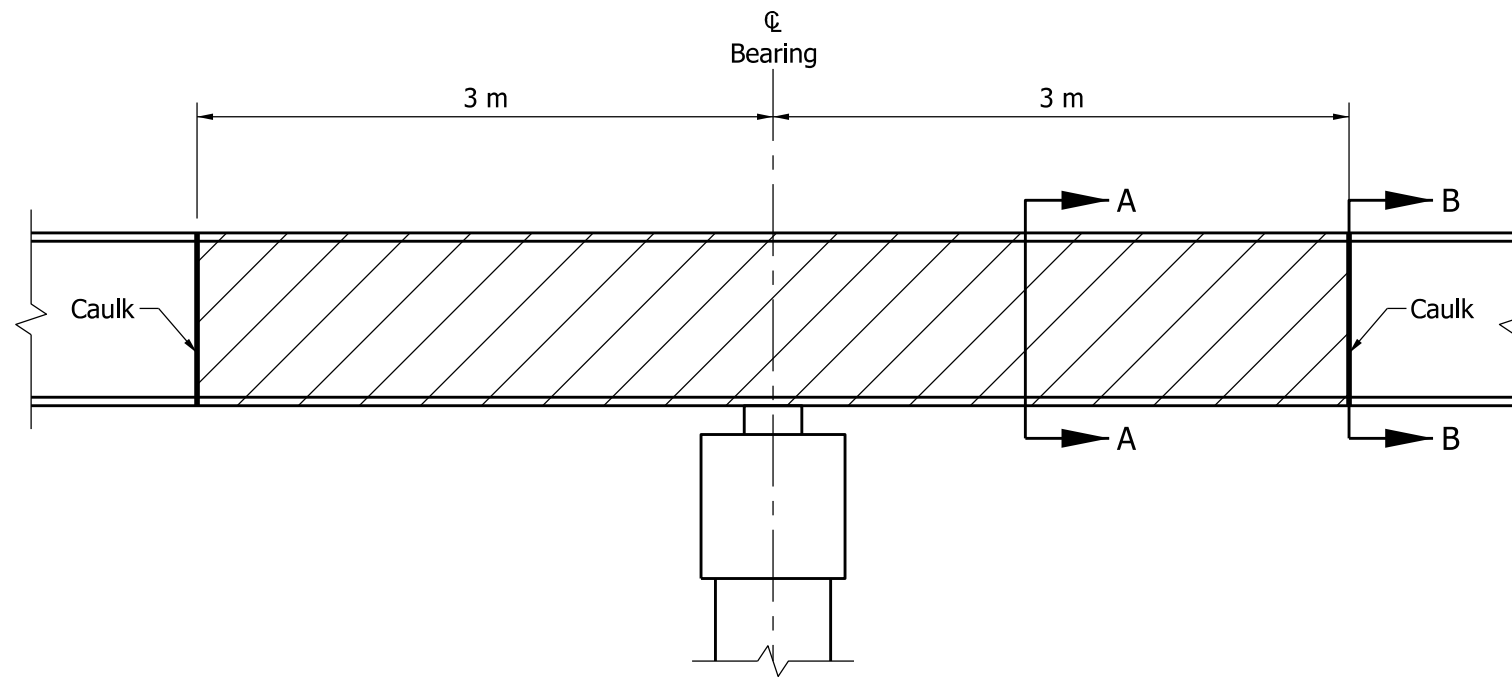


**NOTE:**

1. Caulk shall be placed on the painted surface at the painted/unpainted interface and is intended to function as a drip bead.

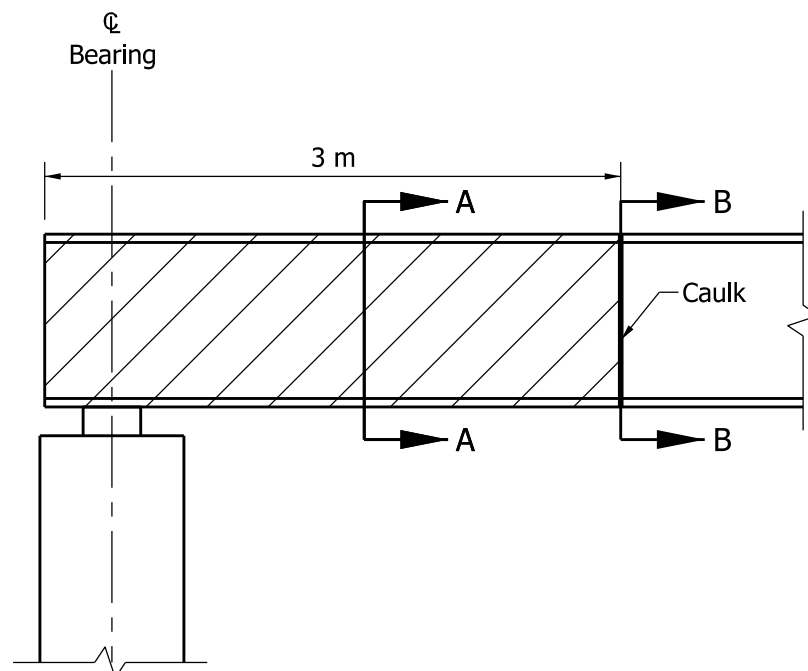
**LEGEND:**

-  = Area to be painted
-  = Caulk Bead



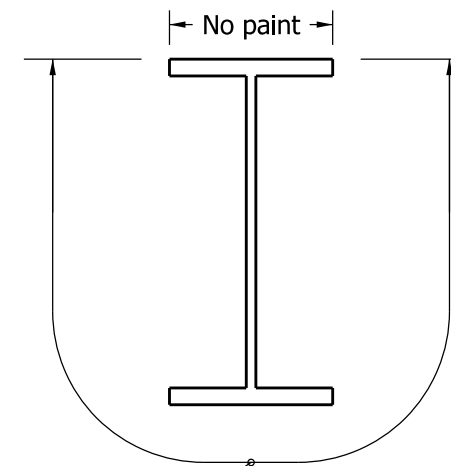
**BEAM OR GIRDER AT INTERIOR SUPPORT**

ELEVATION VIEW  
(Bridge Deck not shown for clarity)



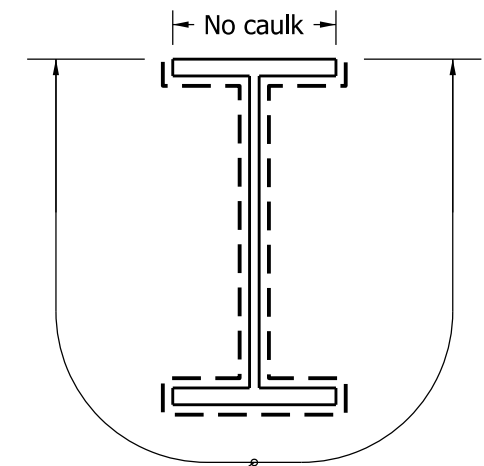
**BEAM OR GIRDER AT END-BENT SUPPORT**

ELEVATION VIEW  
(Bridge Deck, Mudwall, and Concrete Encasement not shown for clarity)



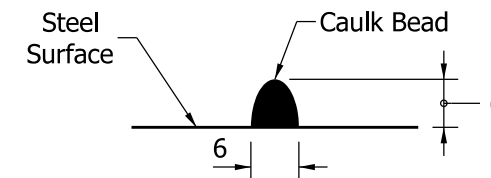
Limits of painting

**SECTION A-A**



Limits of caulking

**SECTION B-B**



**CAULK BEAD DETAIL**

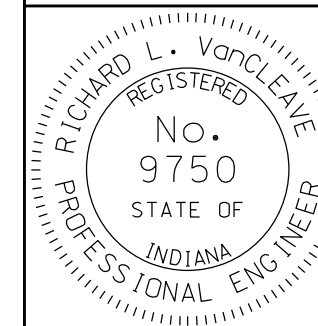
All Dimensions are in mm unless otherwise specified.

INDIANA DEPARTMENT OF TRANSPORTATION

PAINTING REQUIREMENTS  
FOR WEATHERING STEEL

SEPTEMBER 2011

STANDARD DRAWING NO. 619-PRWS-01



DESIGN STANDARDS ENGINEER

*/s/ Richard L. VanCleave* 09/01/11  
DESIGN STANDARDS ENGINEER DATE

*/s/ Mark A. Miller* 09/01/11  
CHIEF HIGHWAY ENGINEER DATE