

SIGN	REMARKS	BACKGROUND	COPY & BORDER
M2-1 (I), M3-1 (I), M3-2 (I), M3-3 (I), M3-4 (I)	Auxiliary markers	S-6-H	S-2-H
M4-5 (I), M4-7 (I), M5-1 (I), M5-2 (I)	Auxiliary markers	S-6-H	S-2-H
M6-1 Through M6-7	Auxiliary markers	S-6-H	S-2-H
M4-5, M4-6, M4-6a	Auxiliary markers	S-7-H	S-2-H
M4-8, M4-9	Detour marker	S-9-H	O-1-H
all other marker Auxiliaries		S-2-H	O-1-H
D4-1	Parking	S-2-H	S-7-H
D5-5, D5-5a, D9-2, D9-6	Rest area & service	S-6-H	S-2-H
D7-2	Recreation area	△	S-2-H
All other destination signs		S-3-H	S-2-H
I-17, I-18, I-19		S-6-H	S-2-H
I-20, I-21		S-2-H	O-1-H
All other I-Signs		S-7-H	S-2-H
All construction signs		S-9-H	O-1-H
All maintenance signs		S-9-H	O-1-H

NOTE: Wherever white is specified herein as a color, it is understood to include silver-colored reflecting coatings or elements that reflect white light.

KEY

CODE	DESCRIPTION
0-1-H	Paint (Black) for use with prismatic reflective sheeting
S-1-H	Reflective sheeting (Yellow) prismatic
S-2-H	Reflective sheeting (Silver) prismatic
S-3-H	Reflective sheeting (Green) prismatic
S-4-H	Reflective sheeting (Blue) prismatic
S-5-H	Reflective sheeting (Silver with reverse screen transparent Red) prismatic
S-6-H	Reflective sheeting (Silver with reverse screen transparent Blue) prismatic
S-7-H	Reflective sheeting (Silver with reverse screen transparent Green) prismatic
S-8-H	Reflective sheeting (Silver with reverse screen transparent Red and Blue) prismatic
S-9-H	Reflective sheeting (Orange) prismatic
A	Cut - Out letters which are painted black or as per specifications
B	Copy as per specifications
△	Brown background with prismatic reflective sheeting

SIGN IDENTIFICATION CODES

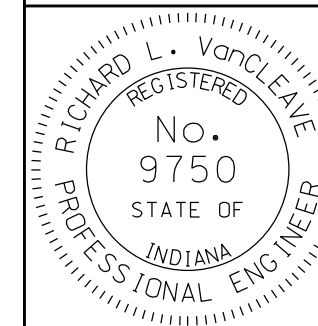
- IGDO Interstate guide directional overhead
- IGD Interstate guide directional
- IGS Interstate guide service and rest area
- IGI Interstate guide information
- GDO Guide directional overhead
- GD Guide directional
- R Regulatory sign
- W Warning, construction, & maint. signs
- M Route markers and aux. markers for assemblies
- D Destination sign
- I Information

INDIANA DEPARTMENT OF TRANSPORTATION

SIGN REFLECTORIZATION SCHEDULE

SEPTEMBER 2010

STANDARD DRAWING NO. 802-SNGS-06



/s/ Richard L. VanCleave 09/01/10
DESIGN STANDARDS ENGINEER DATE

/s/ Mark A. Miller 09/01/10
CHIEF HIGHWAY ENGINEER DATE

DESIGN STANDARDS ENGINEER