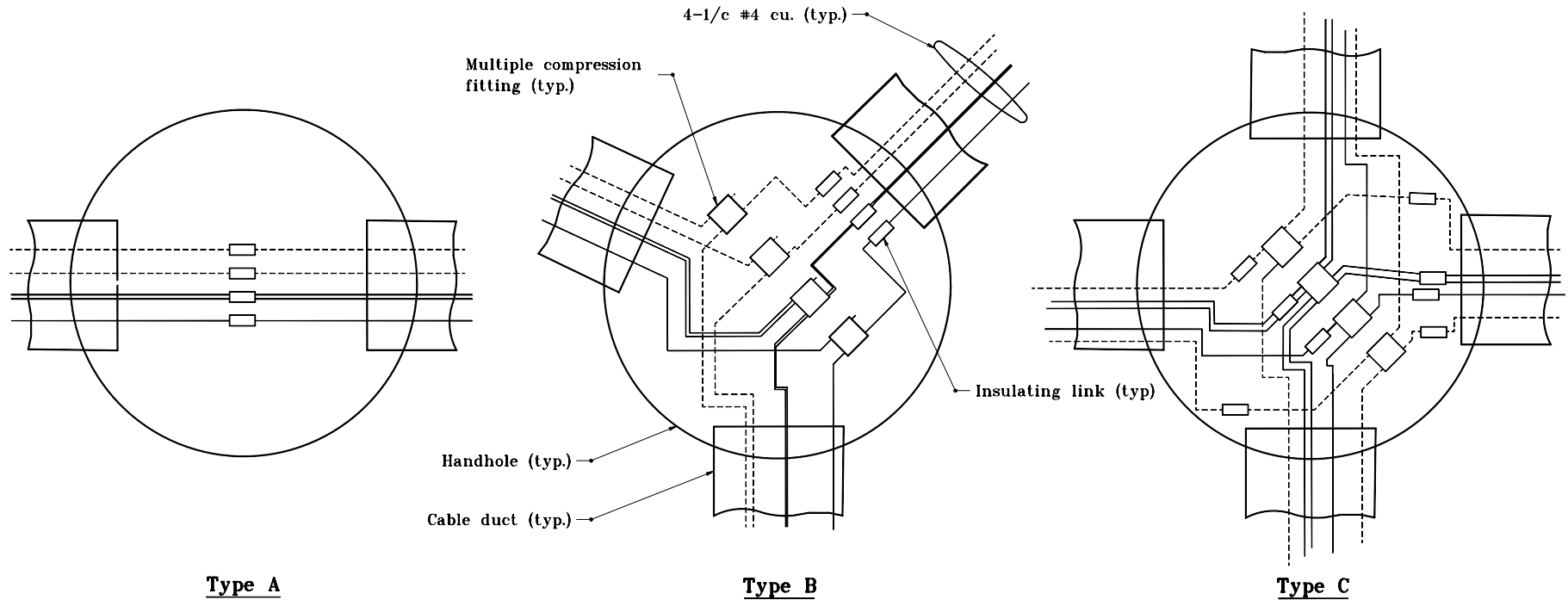


GENERAL NOTES

1. For multiple compression fitting and insulating link details, see Standard Drawing No. E 803-SNWR-04.



HANDHOLE CONNECTION DIAGRAM

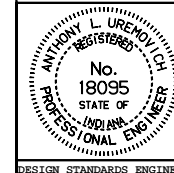
INDIANA DEPARTMENT OF TRANSPORTATION

LIGHT HANDHOLE CONNECTIONS

MARCH 1995

STANDARD DRAWING NO. **E 807-LTHH-02**

DETAILS PLACED IN THIS FORMAT 11-15-99



/s/ Anthony L. Uremovich 11-15-99
DESIGN STANDARDS ENGINEER DATE

/s/ Firooz Zandi 11-15-99
CHIEF HIGHWAY ENGINEER DATE

DESIGN STANDARDS ENGINEER

ORIGINALLY APPROVED 3-01-95