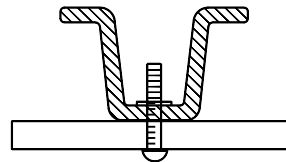
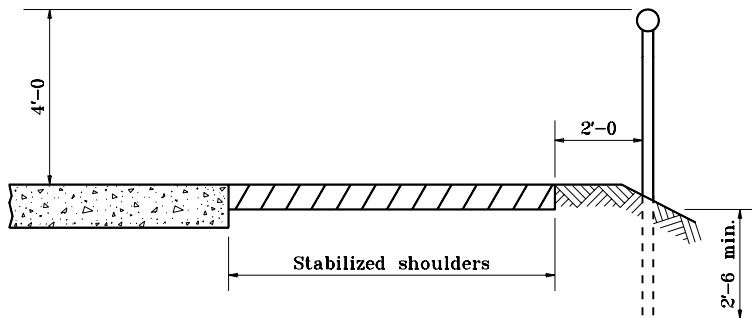


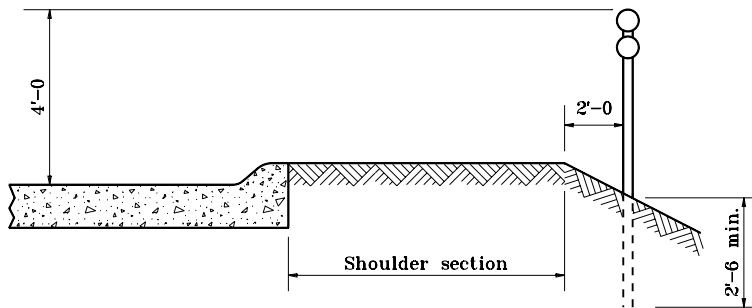
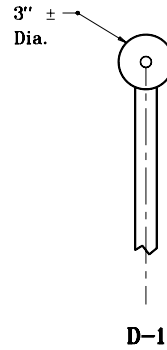
**UNMOUNTABLE CURB SECTION**



**MOUNTING DETAIL**



**SHOULDER SECTION**



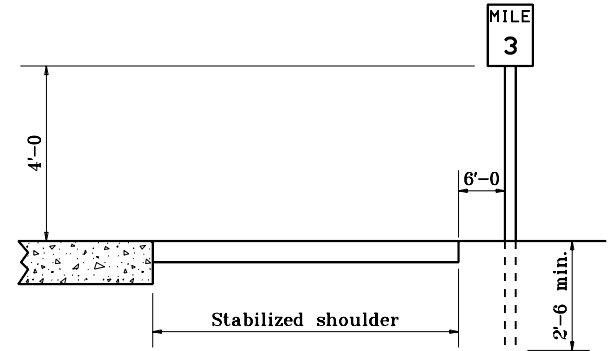
**MOUNTABLE CURB SECTION**



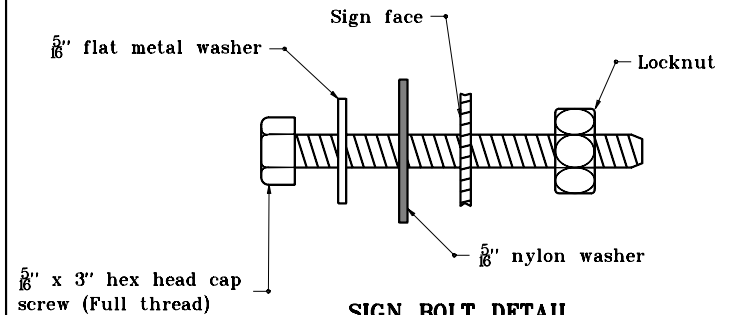
**DELINEATOR DETAILS**

**GENERAL NOTES**

1. Post to be type A flange posts.
2. Mileposts shall be installed in accordance with Interstate Sign Manual.



**TYPICAL MILE or REFERENCE POST**



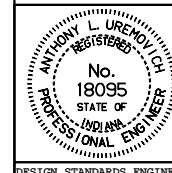
**SIGN BOLT DETAIL**

INDIANA DEPARTMENT OF TRANSPORTATION

MISC. SIGN DETAILS

MARCH 1995

STANDARD DRAWING NO. E 802-SNGS-07



DETAILS PLACED IN THIS FORMAT 11-15-99

/s/ Anthony L. Uremovich 11-15-99  
DESIGN STANDARDS ENGINEER DATE

/s/ Firooz Zandi 11-15-99  
CHIEF HIGHWAY ENGINEER DATE

DESIGN STANDARDS ENGINEER

ORIGINALLY APPROVED 3-01-95