

SIGN	REMARKS	BACKGROUND	COPY & BORDER
M2-1 (I), M3-1 (I), M3-2 (I), M3-3 (I), M3-4 (I)	Auxiliary markers	S-6-H	S-2-H
M4-5 (I), M4-7 (I), M5-1 (I), M5-2 (I)	Auxiliary markers	S-6-H	S-2-H
M6-1 Through M6-7	Auxiliary markers	S-6-H	S-2-H
M4-5, M4-6, M4-6a	Auxiliary markers	S-7-H	S-2-H
M4-8, M4-9	Detour marker	S-9-H	O-1-H
all other marker Auxiliaries		S-2-H	O-1-H
D4-1	Parking	S-2-H	S-7-H
D5-5, D5-5a, D9-2, D9-6	Rest area & service	S-6-H	S-2-H
D7-2	Recreation area	△	S-2-H
All other destination signs		S-3-H	S-2-H
I-17, I-18, I-19		S-6-H	S-2-H
I-20, I-21		S-2-H	O-1-H
All other I-Signs		S-7-H	S-2-H
All construction signs		S-9-H	O-1-H
All maintenance signs		S-9-H	O-1-H

NOTE: Wherever white is specified herein as a color, it is understood to include silver-colored reflecting coatings or elements that reflect white light.

KEY

CODE	DESCRIPTION
0-1-H	Paint (Black) for use with prismatic reflective sheeting
S-1-H	Reflective sheeting (Yellow) prismatic
S-2-H	Reflective sheeting (Silver) prismatic
S-3-H	Reflective sheeting (Green) prismatic
S-4-H	Reflective sheeting (Blue) prismatic
S-5-H	Reflective sheeting (Silver with reverse screen transparent Red) prismatic
S-6-H	Reflective sheeting (Silver with reverse screen transparent Blue) prismatic
S-7-H	Reflective sheeting (Silver with reverse screen transparent Green) prismatic
S-8-H	Reflective sheeting (Silver with reverse screen transparent Red and Blue) prismatic
S-9-H	Reflective sheeting (Orange) prismatic
A	Cut - Out letters which are painted black or as per specifications
B	Copy as per specifications
△	Brown background with prismatic reflective sheeting

SIGN IDENTIFICATION CODES

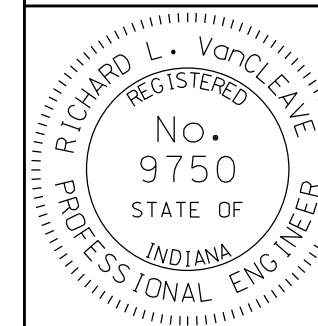
IGDO Interstate guide directional overhead
 IGD Interstate guide directional
 IGS Interstate guide service and rest area
 IGI Interstate guide information
 GDO Guide directional overhead
 GD Guide directional
 R Regulatory sign
 W Warning, construction, & maint. signs
 M Route markers and aux. markers for assemblies
 D Destination sign
 I Information

INDIANA DEPARTMENT OF TRANSPORTATION

SIGN REFLECTORIZATION SCHEDULE

SEPTEMBER 2010

STANDARD DRAWING NO. E 802-SNGS-06



/s/ Richard L. VanCleave 09/01/10
 DESIGN STANDARDS ENGINEER DATE

/s/ Mark A. Miller 09/01/10
 CHIEF HIGHWAY ENGINEER DATE

DESIGN STANDARDS ENGINEER