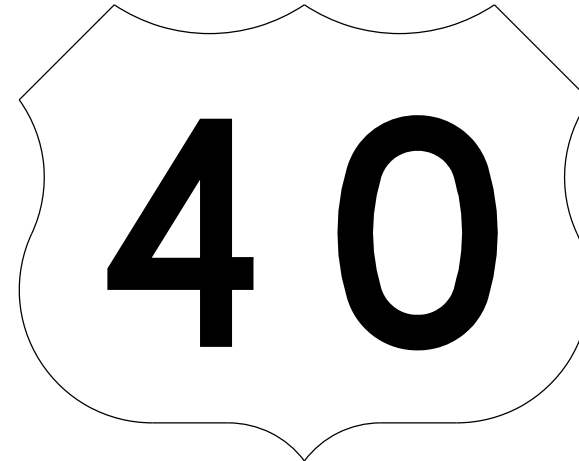




WHITE BACKGROUND WITH BLACK BORDER AND NUMERALS

M1-4(I)



WHITE BACKGROUND WITH BLACK NUMERALS

M1-4(G)

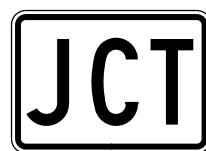
(G) INDICATES SHIELD TO BE USED ON ALL GUIDE SIGNS AND DOES NOT REQUIRE BLACK BORDER

FOR INDEPENDENT USE ONLY

FOR GUIDE SIGN USE

M1-4(I)					
12" NUMERALS		18" NUMERALS		24" NUMERALS	
2 DIGITS	3 DIGITS	2 DIGITS	3 DIGITS	2 DIGITS	3 DIGITS
24" x 24"	30" x 24"	36" x 36"	45" x 36"	48" x 48"	60" x 48"

M1-4(G)					
12" NUMERALS		18" NUMERALS		24" NUMERALS	
2 DIGITS	3 DIGITS	2 DIGITS	3 DIGITS	2 DIGITS	3 DIGITS
24" x 24"	30" x 24"	36" x 36"	45" x 36"	48" x 48"	60" x 48"



M2-1(S)
M2-1(I)



M4-5(I)
M4-5(S)

(I) INDICATES WHITE LEGEND ON BLUE BACKGROUND (INTERSTATE)
(S) INDICATES BLACK LEGEND ON SILVER BACKGROUND (STATE)

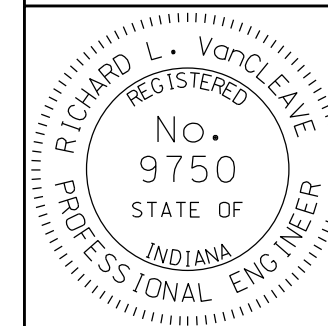
STATE	M2-1(S)	M2-1-(S)	M4-5(S)	M4-5-(S)
INTERSTATE	M2-1(I)	M2-1-(I)	M4-5(I)	M4-5-(I)
SHIELD SIZES	24" x 24" 30" x 24"	36" x 36" 45" x 36"	24" x 24" 30" x 24"	36" x 36" 45" x 36"
CORRESPONDING SIGN SIZE	21" x 15"	21" x 15"	24" x 21"	30" x 15"

INDIANA DEPARTMENT OF TRANSPORTATION

ROUTE MARKER DETAILS

SEPTEMBER 2010

STANDARD DRAWING NO. E 802-SNGS-01



/s/ *Richard L. VanCleave* 09/01/10
DESIGN STANDARDS ENGINEER DATE

/s/ *Mark A. Miller* 09/01/10
CHIEF HIGHWAY ENGINEER DATE

DESIGN STANDARDS ENGINEER