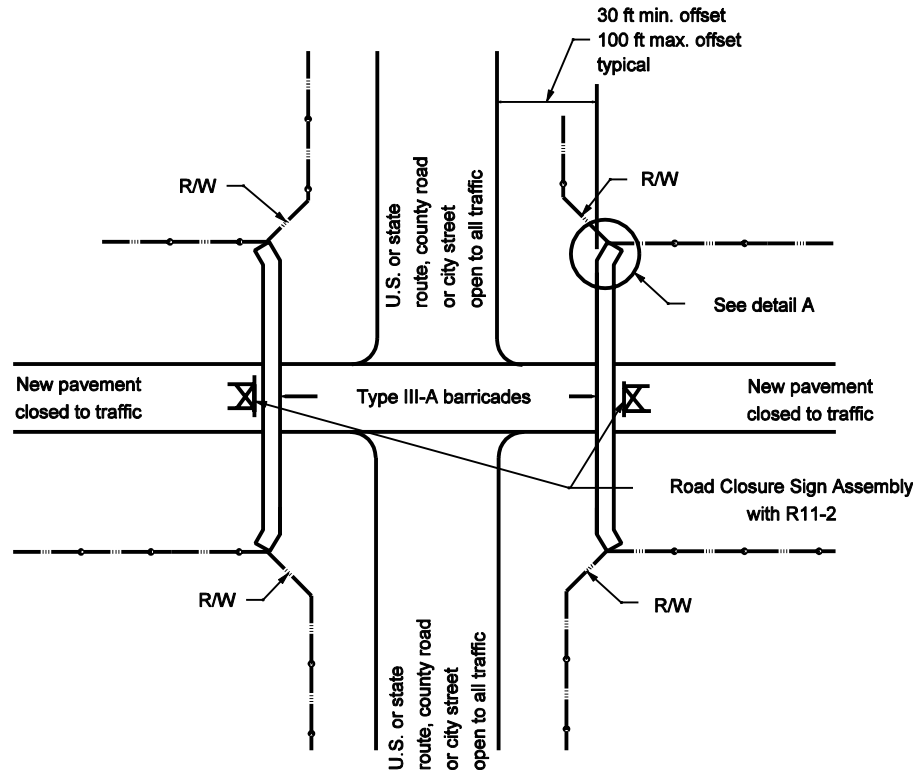
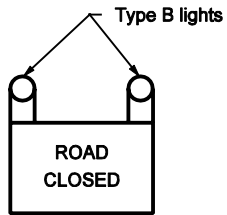


GENERAL NOTES

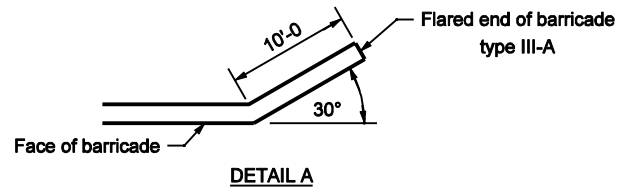
1. See Standard Drawing E 801-TCLG-01 for General Notes and Legend.



TEMPORARY CLOSURE OF NEW PAVEMENT



R 11-2



DETAIL A

INDIANA DEPARTMENT OF TRANSPORTATION	
TEMPORARY CLOSURES	
SEPTEMBER 2002	
STANDARD DRAWING NO. E 801-TCTC-03	
	/s/ Richard L. VanCleave 9-03-02 DESIGN STANDARDS ENGINEER DATE
	/s/ Richard K. Smutzer 9-03-02 CHIEF HIGHWAY ENGINEER DATE
DESIGN STANDARDS ENGINEER	