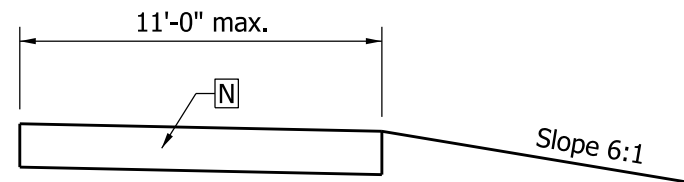
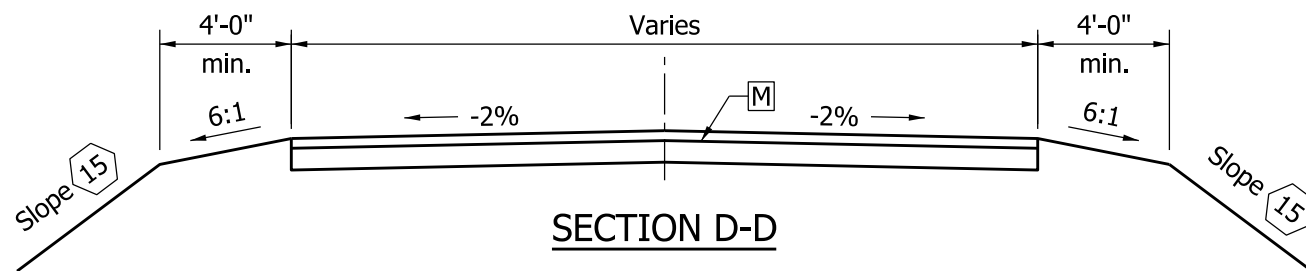


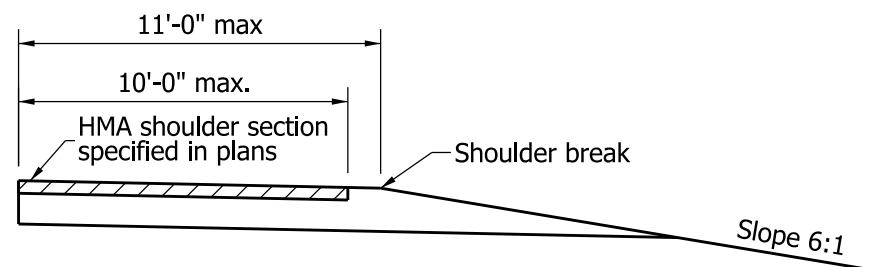
PLAN VIEW



SECTION E-E



SECTION D-D



SECTION F-F

NOTES:

1. See Standard Drawing E 610-DRIV-13 for General Notes and additional Legend.
2. See Standard Drawings E 610-DRIV-11 for drive profile grades.
3. Class VI Drive accommodates a WB-65 (IDV) design vehicle with a 45'-0" turning radius.

LEGEND

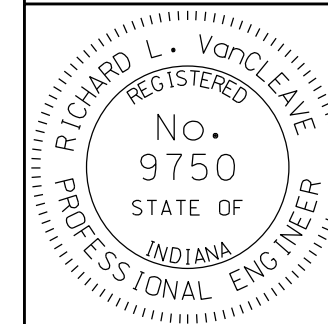
- [M] HMA for Approaches:
165#/syd HMA Surface Type B on
275#/syd HMA Intermediate Type B on
880#/syd HMA base, Type B on
subgrade treatment Type IIIA
or
PCCP for Approaches, 9", on
subgrade treatment Type IIIA
- [N] The greater thickness of either the drive [M]
or the paved shoulder section.
- [S] For type and thickness equivalent
to surface in place, see plans.

INDIANA DEPARTMENT OF TRANSPORTATION

CLASS VI DRIVE
PLAN AND SECTIONS

SEPTEMBER 2010

STANDARD DRAWING NO. E 610-DRIV-06



/s/ Richard L. VanCleave 09/01/10
DESIGN STANDARDS ENGINEER DATE

/s/ Mark A. Miller 09/01/10
CHIEF HIGHWAY ENGINEER DATE

DESIGN STANDARDS ENGINEER