

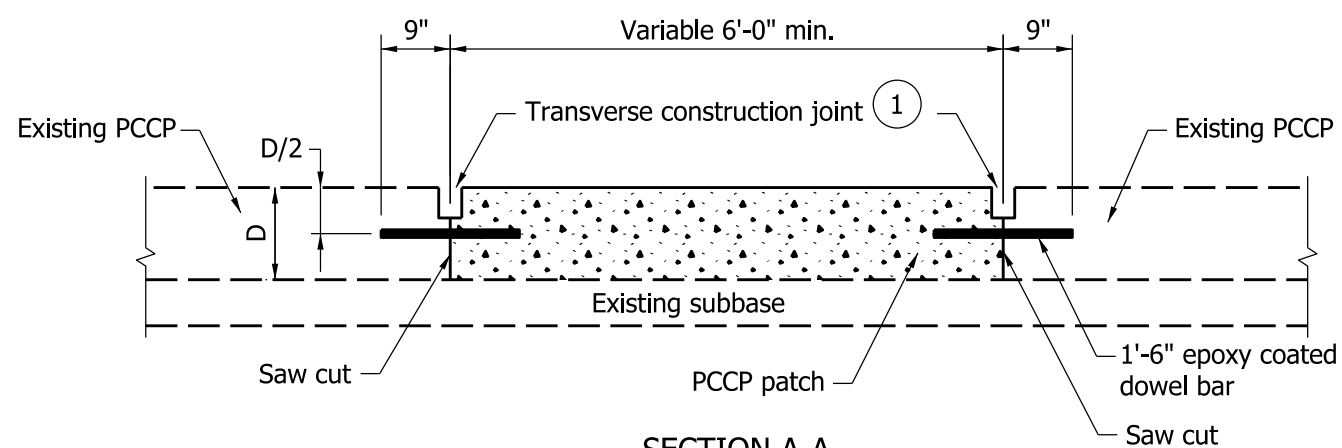
DOWEL BAR SIZES	
Pavement Thickness, D	Minimum Dowel Bar Diameter
Less than 9"	1"
9" through 12"	1 1/4"
Greater than 12"	1 1/2"

**NOTES:**

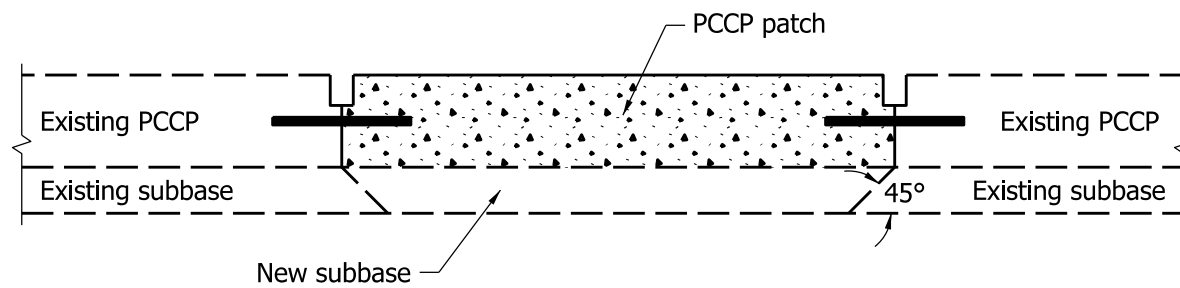
- ① See Standard Drawing E 503-CCPJ-06 for joint seal details.
2. Saw cuts and joint seal shall be omitted if PCCP is to be overlaid.
3. Minimum of 2'-0" horizontal distance between retrofitted tie bar and the nearest D-1 contraction joint within the patch or the end of the patch.
4. Retrofitted tie bars are not to be placed less than 2'-0" from any transverse joint or random crack in an adjacent PCCP lane or PCCP shoulder.
5. See Standard Drawing E 503-CCPJ-07 for retrofit tie bar sizing and spacing.

16-Epoxy coated dowel bars  
(See table for minimum dowel bar diameter)

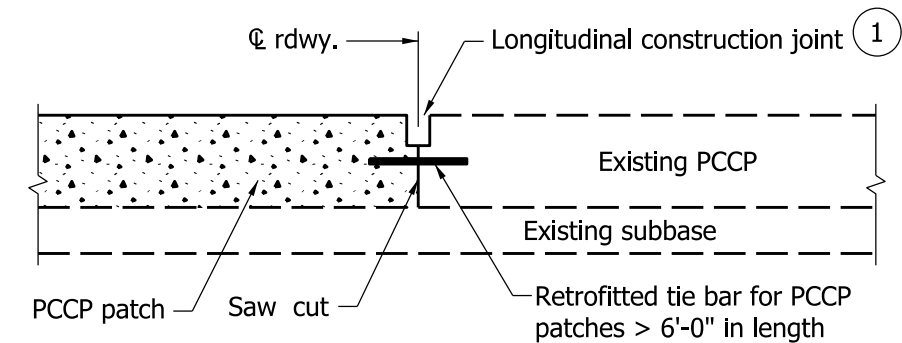
**PLAN**



**SECTION A-A**  
(Where Existing Subbase is not removed)



**SECTION A-A**  
(Where Existing Subbase must be removed)



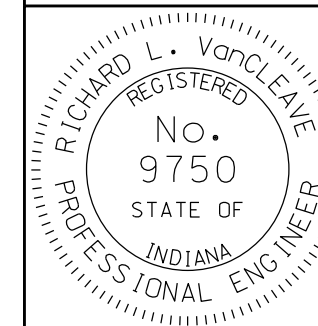
**SECTION B-B**

INDIANA DEPARTMENT OF TRANSPORTATION

CONCRETE PAVEMENT  
PATCH DETAILS

SEPTEMBER 2010

STANDARD DRAWING NO. E 506-CCPP-01



/s/ Richard L. VanCleave 09/01/10  
DESIGN STANDARDS ENGINEER DATE

/s/ Mark A. Miller 09/01/10  
CHIEF HIGHWAY ENGINEER DATE

DESIGN STANDARDS ENGINEER