

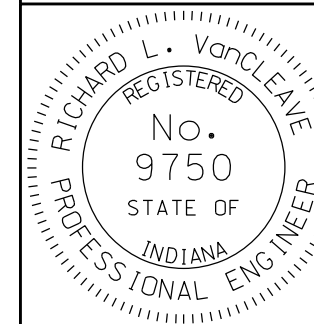
LEGEND:

- 1 140 lb/yd² HMA Surface Type A, on
220 lb/yd² HMA Intermediate, Type A
- 2 6" Compacted Aggregate No.53, Base
- 5 Width and Cross Slope as required
- 6 Subgrade Treatment (3" subgrade excavated
and replaced with 3" Coarse Aggregate No.53)
- 7 Variable-depth Compacted Aggregate No.53 or No.73

INDIANA DEPARTMENT OF TRANSPORTATION

HMA NONMOTORIZED-VEHICLE-USE FACILITY
PAVEMENT SECTION
ON ABANDONED-RAILROAD CORRIDOR
SEPTEMBER 2010

STANDARD DRAWING NO. E 402-NVUF-02



DESIGN STANDARDS ENGINEER

/s/ *Richard L. VanCleave* 09/01/10
DESIGN STANDARDS ENGINEER DATE

/s/ *Mark A. Miller* 09/01/10
CHIEF HIGHWAY ENGINEER DATE