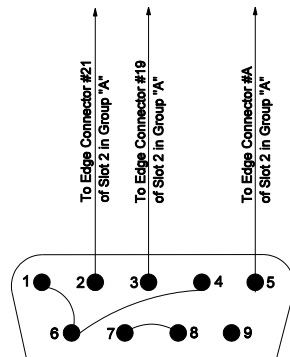


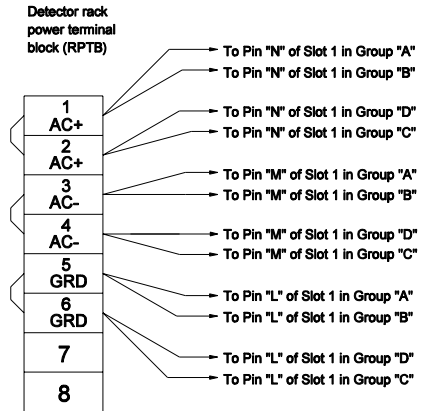
SEE SITE SPECIFIC DRAWINGS FOR CONNECTION OF FIELD WIRES TO TERMINAL BLOCK

DETECTOR CARD DIN RAIL  
TERMINAL BLOCKS (DCTB)

(16-BLOCK DIN RAIL GROUPS "B", "C", "D" NOT SHOWN)



#1 RS232  
PIN-OUT DETAIL



**NOTES:**

1. Cables from rack to field terminal block shall be two pair twisted with a shield on each pair.
2. Field terminal blocks shall be Entrelec #0115-271.22
3. Cables from rack to field terminal blocks shall be 3048 in length with extra coiled P on end of rack.
4. Slot 1 for rack power module. Slots 2 through 5 are for canoga channel cards.
5. See Standard Drawings 809-ITSC-01 thur -06 or -07 for additional ITS cabinet details.

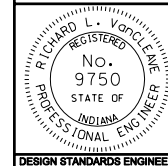
All dimensions are in mm unless otherwise specified

INDIANA DEPARTMENT OF TRANSPORTATION

**INDOT ITS CABINET MICROLOOP  
CARD RACK WIRING DIAGRAM**

MARCH 2006

STANDARD DRAWING NO. 809-ITSC-06A



/s/ Richard L. VanCleave 3-01-06  
DESIGN STANDARDS ENGINEER DATE

/s/ Richard K. Smutzer 3-01-06  
CHIEF HIGHWAY ENGINEER DATE

DESIGN STANDARDS ENGINEER