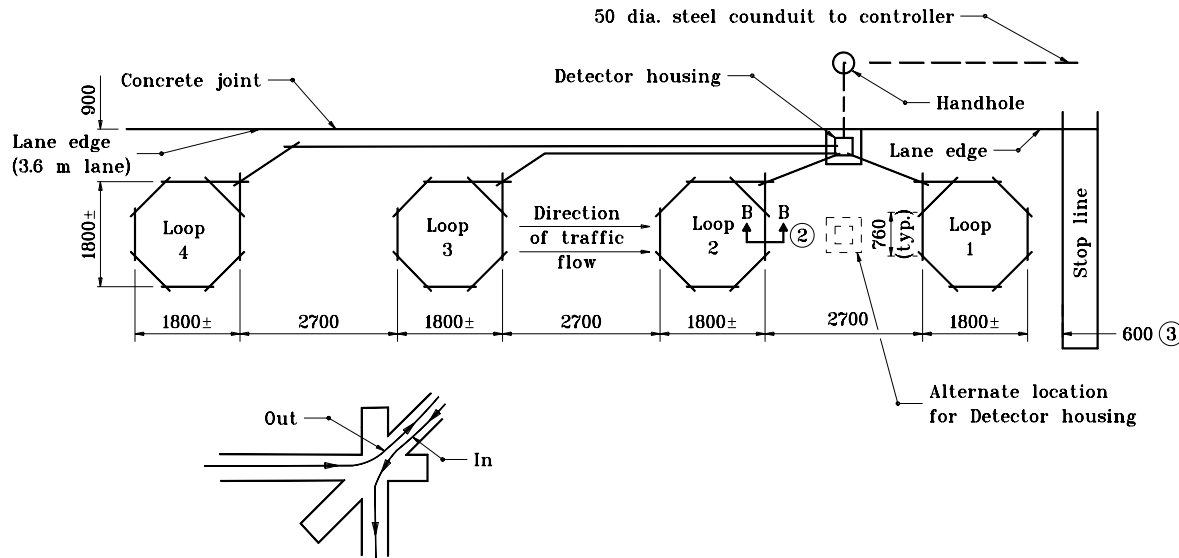
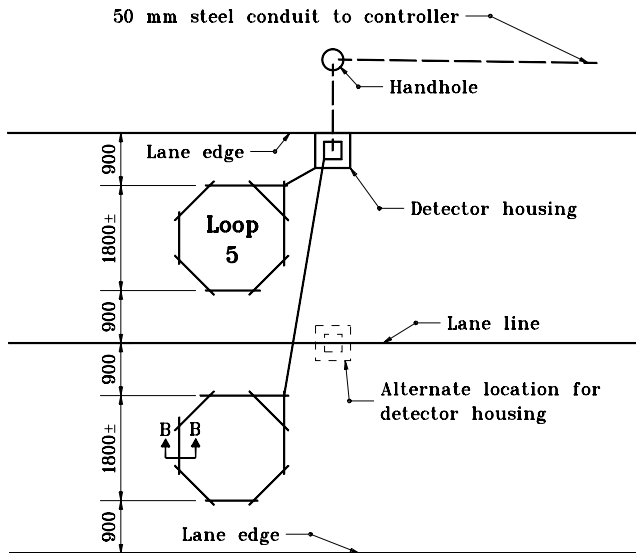


TYPICAL LOOP DETECTION SAW-CUT PLAN (ONE LANE)



TYPICAL LOOP DETECTION (TWO LANES)



GENERAL NOTES

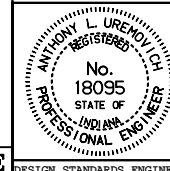
1. Loop saw-cuts as shown on plan sheets are to be considered as schematic only. In the event of discrepancies, this detail shall govern.
- ② See Standard Drawing 805-SGLI-02 for Section B-B.
- ③ This distance is typical depending on the intersection geometrics; a loop can be sawed in front of the stop line.

All dimensions are in mm unless otherwise specified.

INDIANA DEPARTMENT OF TRANSPORTATION

**TRAFFIC SIGNAL
LOOP INSTALLATION**
MAY 1998

STANDARD DRAWING NO. **805-SGLI-01**



/s/ Anthony L. Uremovich 5-01-98
DESIGN STANDARDS ENGINEER DATE

/s/ Donald W. Lucas 5-01-98
CHIEF HIGHWAY ENGINEER DATE

Source Sheet: NONE