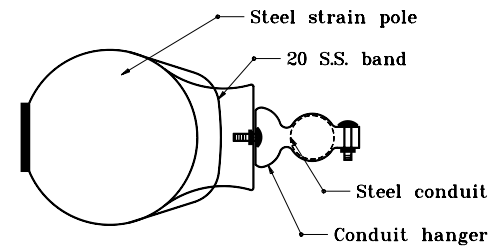


**GENERAL NOTES**

- ① This distance shall be from 3.0 m to 4.6 m above centerline of pavement for vehicular signals and from 2.1 m to 3.0 m above top of sidewalk for pedestrian signals.
- ② Each pedestrian signal and each vehicular signal requires 2 pole plates and 2 pipe arms.

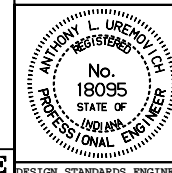


**DETAIL A**

All dimensions are in mm unless otherwise specified.

INDIANA DEPARTMENT OF TRANSPORTATION  
**SIGNAL INDICATION MOUNTED  
 ON STEEL OR WOOD POLES**  
 SEPTEMBER 1998

STANDARD DRAWING NO. 805-SGCO-04



/s/ Anthony L. Uremovich 9-01-98  
 DESIGN STANDARDS ENGINEER      DATE

/s/ Donald W. Lucas 9-01-98  
 CHIEF HIGHWAY ENGINEER      DATE

Source Sheet: NONE