

GENERAL NOTES

1. Sign XW21-3-A shall be placed as directed where road machinery is operating on or across pavement open to traffic.
2. See Standard Drawing 801-TCSN-11 for additional general notes.



XW20-1
XW20-1-A

10



XW20-2

10



XW21-3-A

9
10



XW20-3

10



XW21-4-A

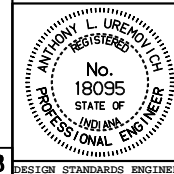
10



XW20-4

10

All dimensions are in mm unless otherwise specified.
 INDIANA DEPARTMENT OF TRANSPORTATION
 TRAFFIC CONTROL
 SIGNS
 JUNE 1995
 STANDARD DRAWING NO. 801-TCSN-01



/s/ Anthony L. Uremovich 7-03-95
 DESIGN STANDARDS ENGINEER DATE

/s/ Donald W. Lucas 7-03-95
 CHIEF HIGHWAY ENGINEER DATE