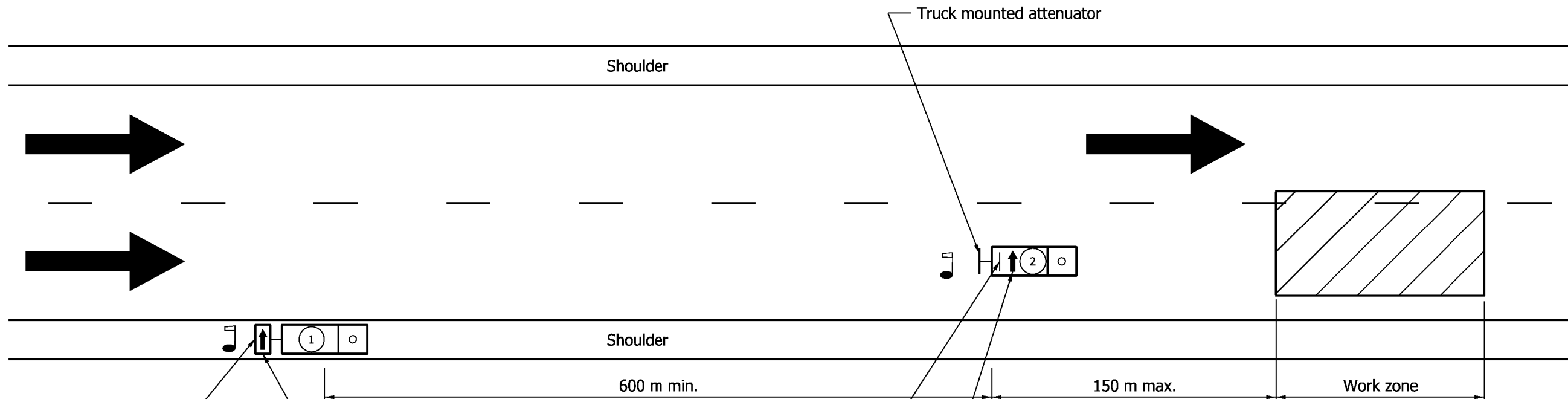
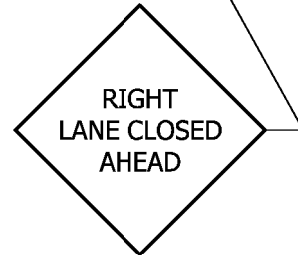


MULTI-LANE DIVIDED HIGHWAY



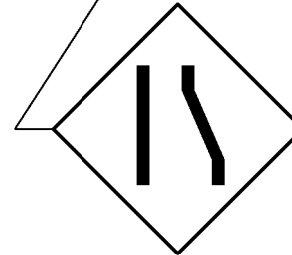
Truck mounted flashing arrow sign



XW20-5
(R or L)
Mounted to bottom
of flashing arrow sign

LEGEND

- Flagger
- Truck which may be a pick-up
- Truck which shall be 10900 kg or greater gross vehicular weight



XWA-2
(R or L)
Mounted on rear
of truck

750 x 1200 roof mounted flashing arrow sign

GENERAL NOTES

1. Flagger shall be used while trucks are stopped.
2. Strobe lights will be require on all vehicles.
3. Distances shown are approximate and may be adjusted as directed.
4. Truck mounted attenuator shall be designed to attenuator impacts by a pickup truck of 2000 kg gross vehicular weight at 100 km/h.

LONGITUDINAL BUFFER LENGTH SHOWN ON STANDARD DRAWING 801-TCFO-01

Posted Speed Limit, mph	Length, m
30 or lower	25
35	35
40	55
45	70
50	85
55	105
60	125
65	150

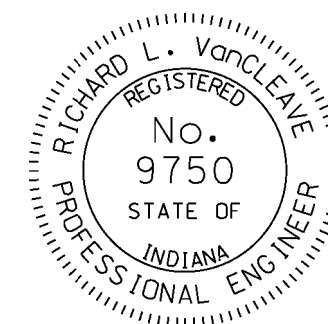
All Dimensions are in mm unless otherwise specified.

INDIANA DEPARTMENT OF TRANSPORTATION

MAINTENANCE OF TRAFFIC FOR REFLECTOR REPLACEMENT

SEPTEMBER 2009

STANDARD DRAWING NO. 801-TCFO-03



DESIGN STANDARDS ENGINEER

/s/ Richard L. VanCleave 09/01/09
DESIGN STANDARDS ENGINEER DATE

/s/ Mark A. Miller 09/01/09
CHIEF HIGHWAY ENGINEER DATE