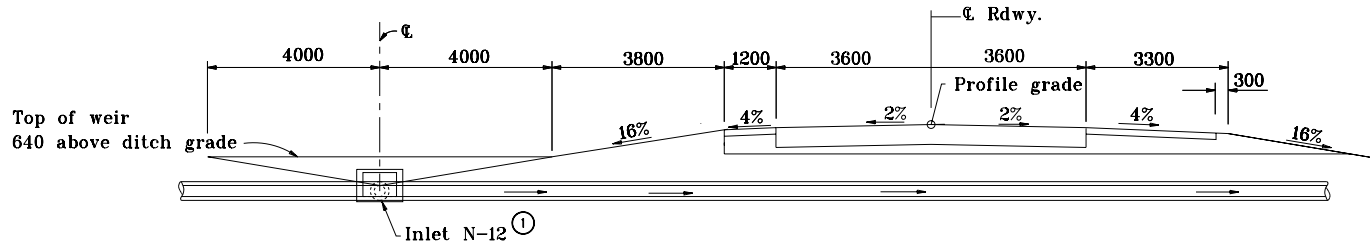
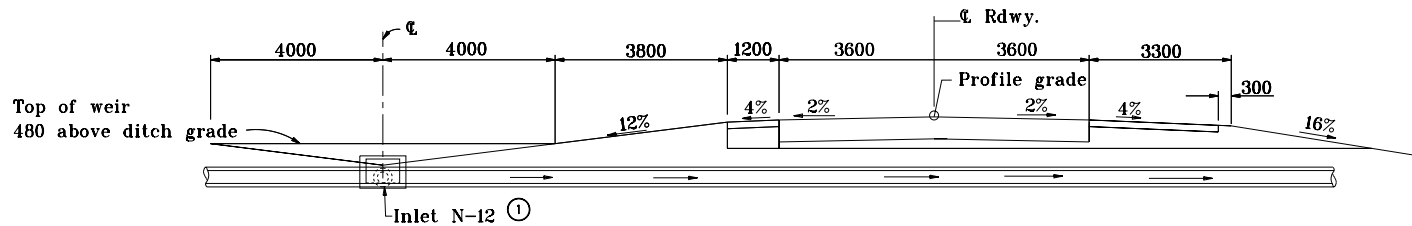


GENERAL NOTES

- ① See Standard Drawing 720-INST-08 for inlet type N-12 details.



USE WITH MEDIAN SLOPE OF 16%



USE WITH MEDIAN SLOPE OF 12%

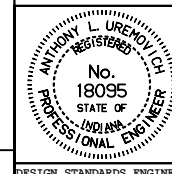
All dimensions are in mm unless otherwise specified.

INDIANA DEPARTMENT OF TRANSPORTATION

**CENTER DITCH INLET
PARALLEL TO ℄ ROADWAY**

MAY 1998

STANDARD DRAWING NO. **617-CDIN-02**



/s/ Anthony L. Uremovich 5-01-98
DESIGN STANDARDS ENGINEER DATE

/s/ Donald W. Lucas 5-01-98
CHIEF HIGHWAY ENGINEER DATE

Source Sheet: MSI