

GENERAL NOTES

1. Radii of 7600 at minor cross streets shall be provided on new construction and on reconstruction where space permits.
2. Radii of 9200 or more at major cross streets shall be provided where feasible so that a truck may turn without encroachment.
3. Radii of 12200 or more at major cross streets shall be provided where trucks and buses repeatedly turn.

④ Ear construction type B permitted as shown on Standard Drawing 605-ERCN-02.

LEGEND

- Ⓐ PCCP
- ⑤ Longitudinal joint
- ⑦ Keyway joint
- ⑨ 30 preformed joint filler
- ⑩ 10 preformed joint filler
- ⑭ Integral concrete curb
- ⑮ Combined curb and gutter
- ⑳ Contraction joint

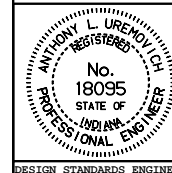
All dimensions are in mm unless otherwise specified.

INDIANA DEPARTMENT OF TRANSPORTATION

STREET or ALLEY APPROACH

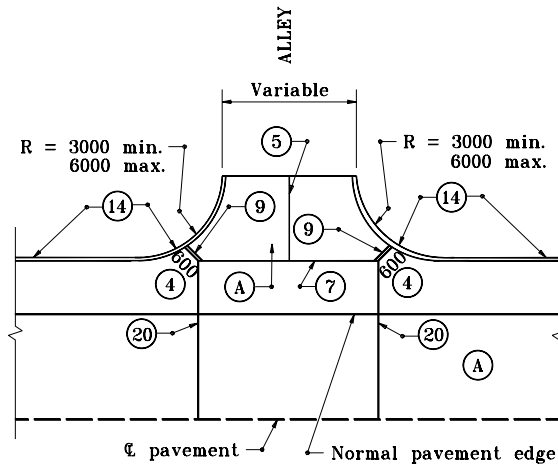
JANUARY 2000

STANDARD DRAWING NO. **610-PRAP-13**

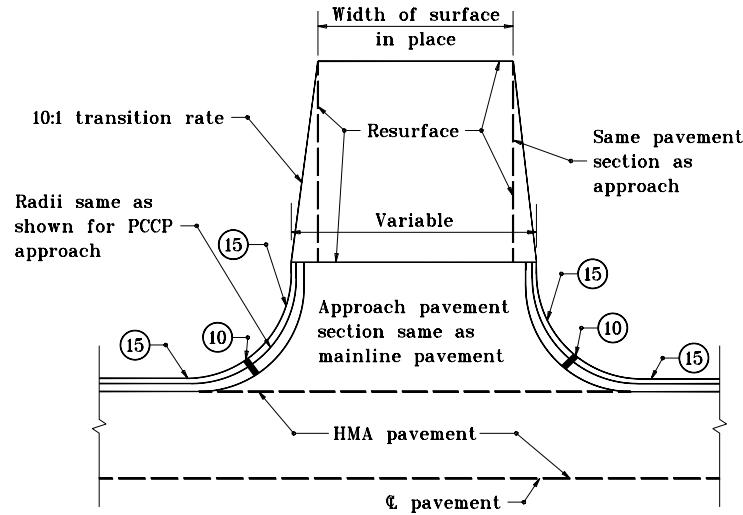


/s/ Anthony L. Uremovich 1-03-00
DESIGN STANDARDS ENGINEER DATE

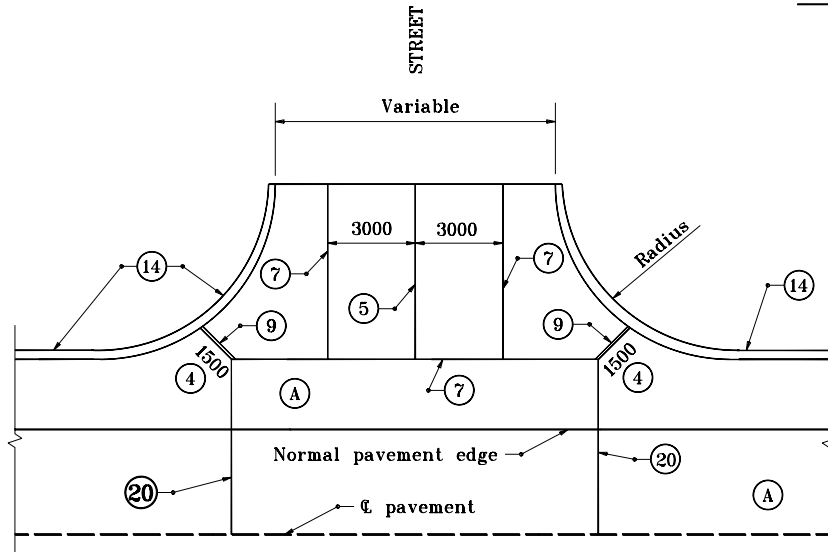
/s/ Firooz Zandi 1-03-00
CHIEF HIGHWAY ENGINEER DATE



**ALLEY APPROACH
WITH PCCP MAINLINE PAVEMENT**



**STREET OR ALLEY APPROACH
WITH HMA MAINLINE PAVEMENT**



**STREET APPROACH
WITH PCCP MAINLINE PAVEMENT**