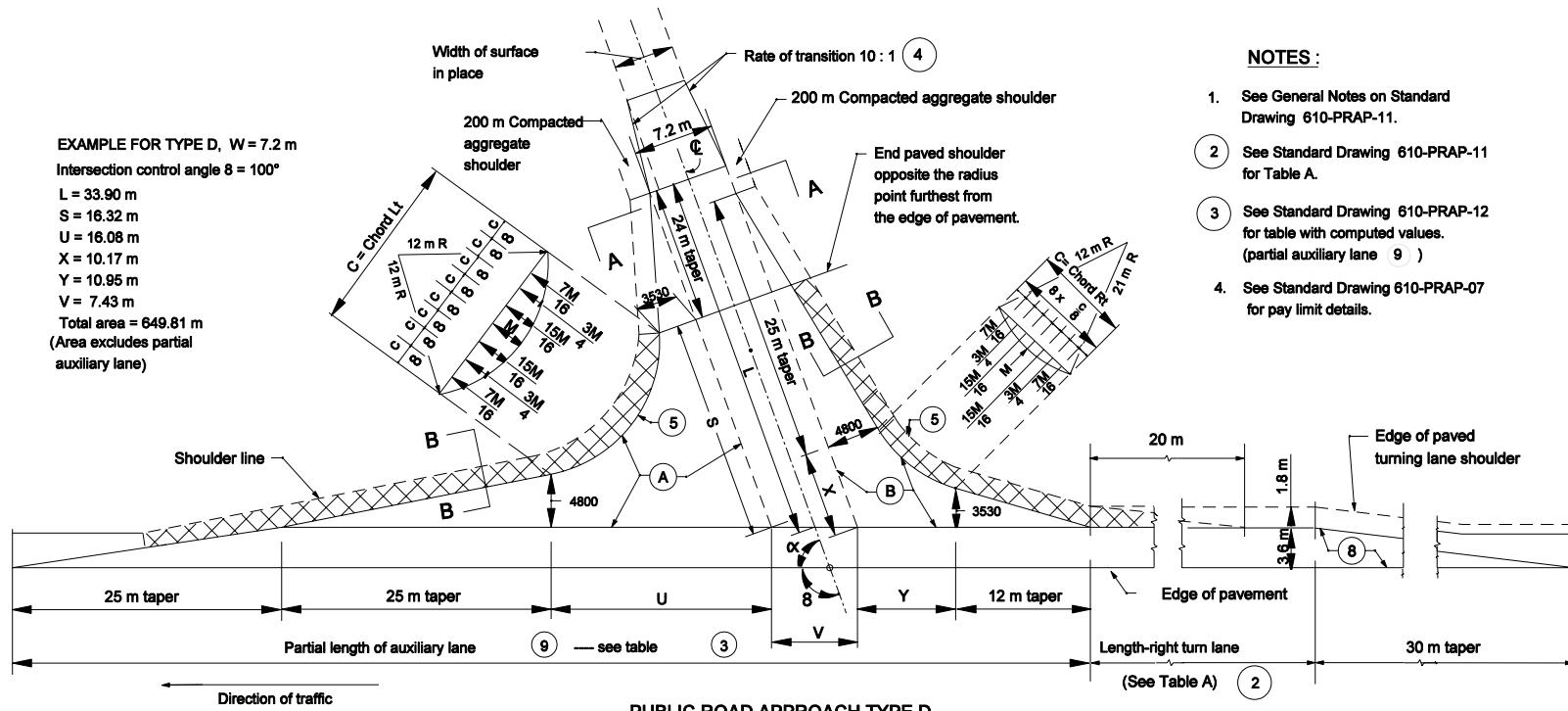
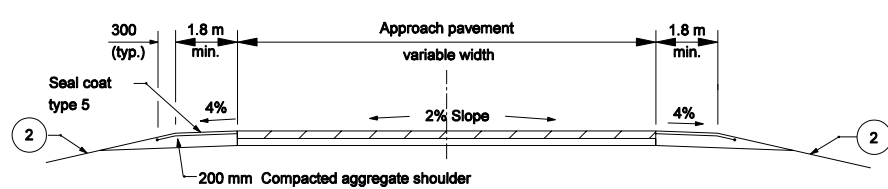


EXAMPLE FOR TYPE D, W = 7.2 m
 Intersection control angle $\delta = 100^\circ$
 L = 33.90 m
 S = 16.32 m
 U = 16.08 m
 X = 10.17 m
 Y = 10.95 m
 V = 7.43 m
 Total area = 649.81 m²
 (Area excludes partial auxiliary lane)



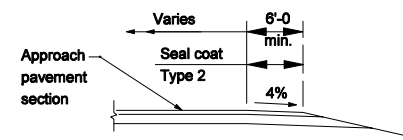
- NOTES :**
1. See General Notes on Standard Drawing 610-PRAP-11.
 2. See Standard Drawing 610-PRAP-11 for Table A.
 3. See Standard Drawing 610-PRAP-12 for table with computed values. (partial auxiliary lane 9)
 4. See Standard Drawing 610-PRAP-07 for pay limit details.

PUBLIC ROAD APPROACH TYPE D



SECTION A-A MINIMUM PAVEMENT SECTION
 FOR ≤ 50 : TRUCKS, CLASS V OR ABOVE PER DAY

90 kg/m HMA Surface 9.5mm Type A on
 270 kg/m HMA Intermediate 19.0 mm Type A on
 200 mm compacted aggregate base #53

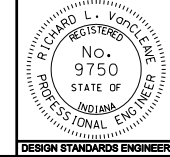


SECTION B-B

All Dimensions are in mm unless otherwise specified
 INDIANA DEPARTMENT OF TRANSPORTATION

PUBLIC ROAD APPROACH TYPE D
 MARCH 2006

STANDARD DRAWING NO. 610-PRAP-10



/s/ Richard L. VanCleave 3-01-06
 DESIGN STANDARDS ENGINEER DATE
 /s/ Richard K. Smutzer 3-01-06
 CHIEF HIGHWAY ENGINEER DATE

DESIGN STANDARDS ENGINEER