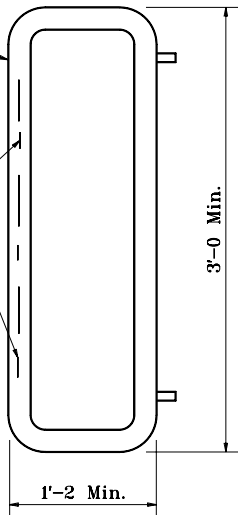
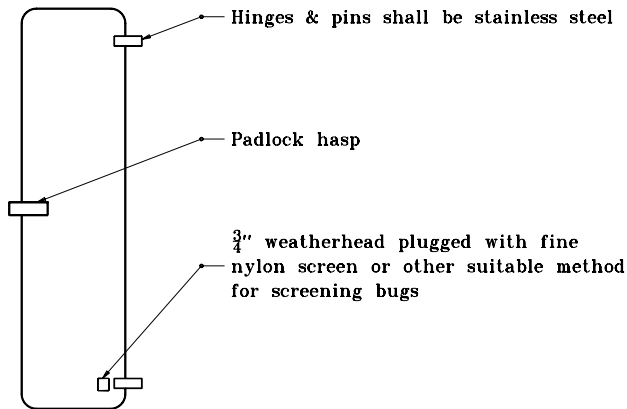


Silicone or neoprene rubber gasket

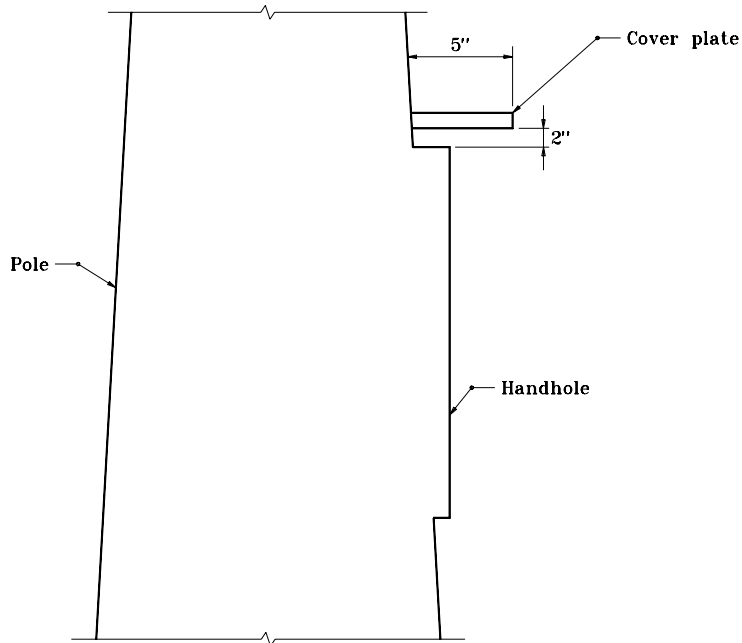
1/4" x 1" DP Drill & tap 2 places for stainless steel bolts for securing door shut



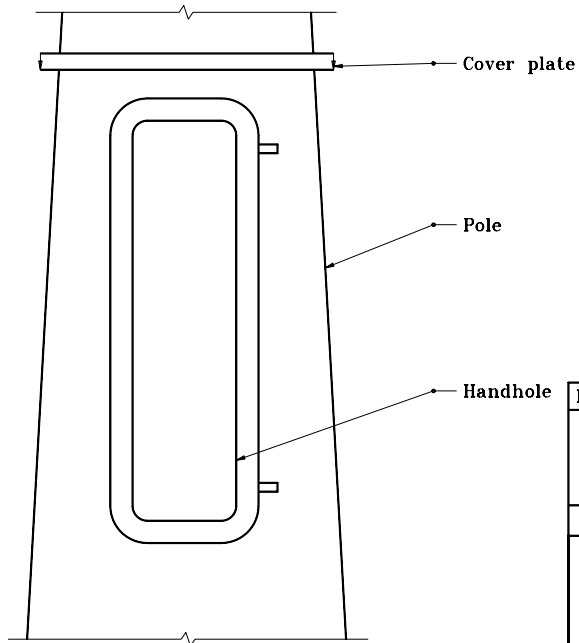
HANDHOLE FRAME DETAIL



HANDHOLE COVER DETAIL



COVER PLATE



INDIANA DEPARTMENT OF TRANSPORTATION	
HIGHWAY ILLUMINATION TOWER BOTTOM LATCH	
MARCH 1995	
STANDARD DRAWING NO. E 807-LTHI-04	
	DETAILS PLACED IN THIS FORMAT 11-15-99
	/s/ Anthony L. Uremovich 11-15-99 DESIGN STANDARDS ENGINEER DATE
	/s/ Firooz Zandi 11-15-99 CHIEF HIGHWAY ENGINEER DATE
DESIGN STANDARDS ENGINEER	ORIGINALLY APPROVED 3-01-95