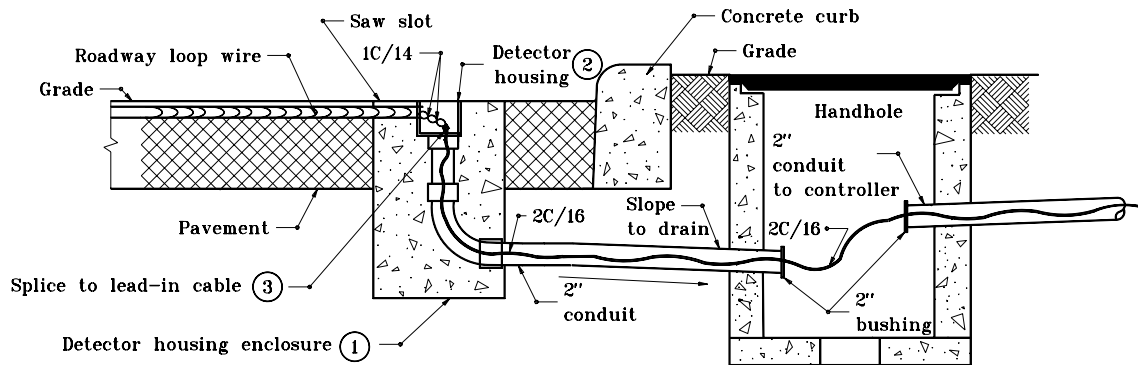
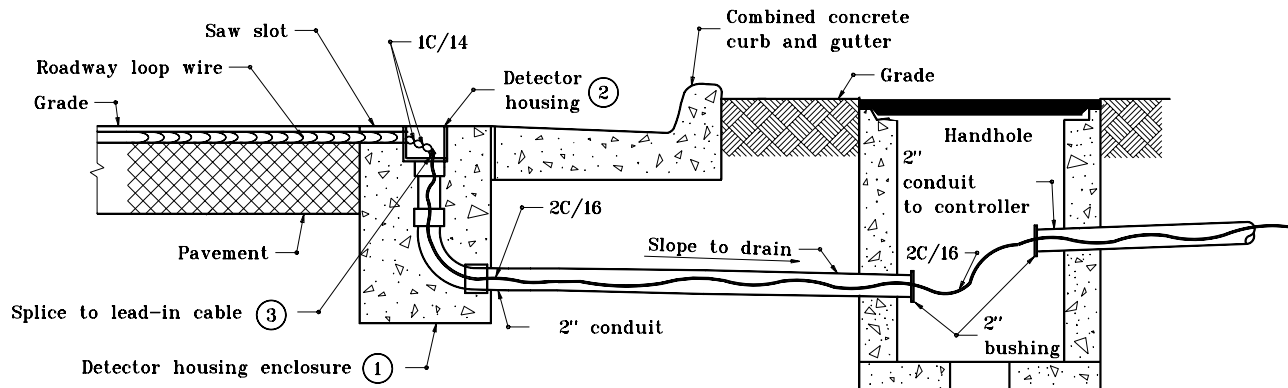


CROSS SECTION FOR NON-CURBED SECTIONS



CROSS SECTION FOR CONCRETE CURB SECTIONS



CROSS SECTION FOR COMBINED CURB & GUTTER SECTIONS

GENERAL NOTES

- ① For detail, see Standard Drawing No. E 805-SGDH-01.
- ② For detail, see Standard Drawing No. E 805-SGDH-02
- ③ For detail, see Standard Drawing No. E 805-SGLI-04.

INDIANA DEPARTMENT OF TRANSPORTATION	
TRAFFIC SIGNAL LOOP DETECTOR HOUSING INSTALLATION	
MARCH 1995	
STANDARD DRAWING NO. E 805-SGLI-03	
	DETAILS PLACED IN THIS FORMAT 11-15-99 /s/ Anthony L. Uremovich 11-15-99 DESIGN STANDARDS ENGINEER DATE
DESIGN STANDARDS ENGINEER	/s/ Firooz Zandi 11-15-99 CHIEF HIGHWAY ENGINEER DATE ORIGINALLY APPROVED 3-01-95