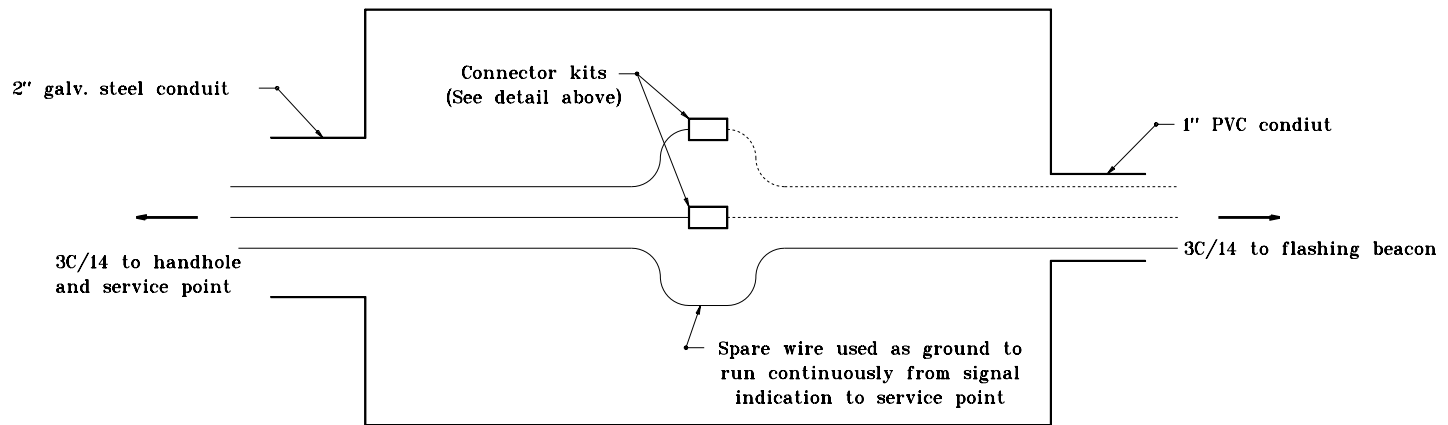
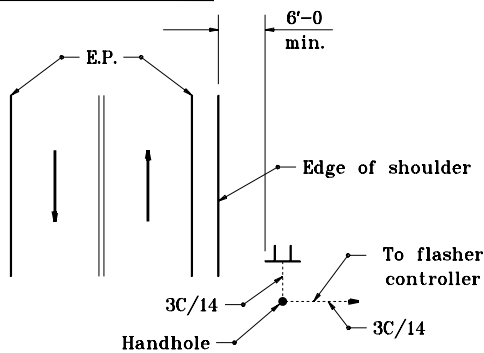


**DISCONNECT CONNECTOR KIT  
TO BE USED IN DETECTOR HOUSING**

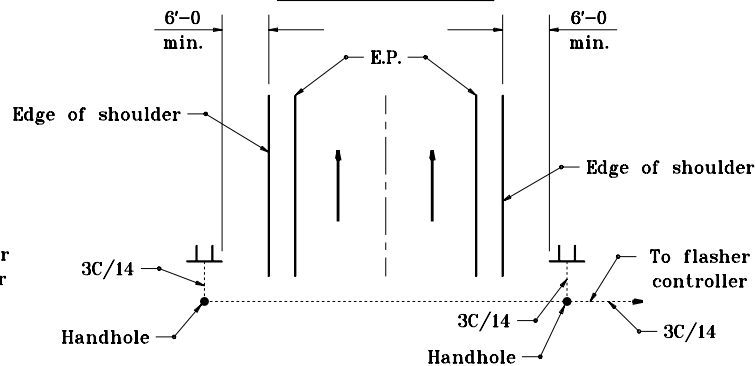


**DETECTOR HOUSING CONNECTIONS DETAIL**

**SINGLE LANE ROADWAY**



**MULTI-LANE ROADWAY**



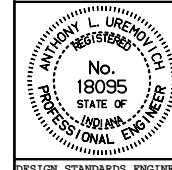
**TYPICAL FLASHING BEACON CONFIGURATION**

INDIANA DEPARTMENT OF TRANSPORTATION

**FLASHING BEACON WITH  
WARNING SIGN DETAILS**

MAY 1998

STANDARD DRAWING NO. **E 805-SGFB-02**



DETAILS PLACED IN THIS FORMAT 11-15-99

/s/ Anthony L. Uremovich 11-15-99  
DESIGN STANDARDS ENGINEER DATE

/s/ Firooz Zandi 11-15-99  
CHIEF HIGHWAY ENGINEER DATE

DESIGN STANDARDS ENGINEER

ORIGINALLY APPROVED 5-01-98