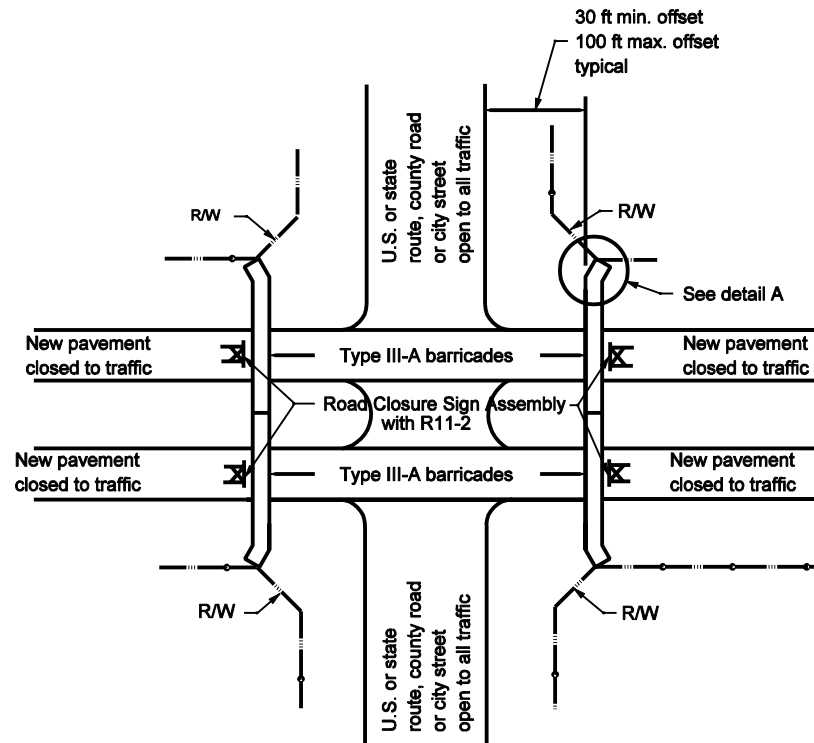
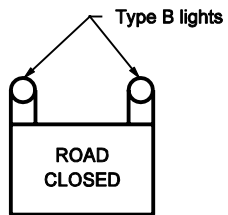


GENERAL NOTES

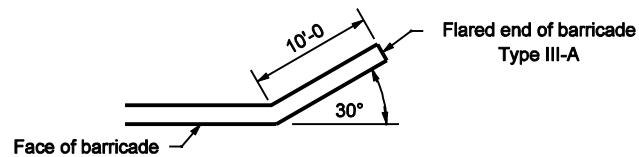
1. See Standard Drawing E 801-TCLG-01 for General Notes and Legend.



TEMPORARY CLOSURE OF BOTH NEW LANES OF PAVEMENT OF A DUAL LANE FACILITY



R 11-2



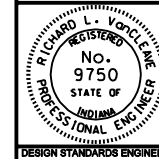
DETAIL A

INDIANA DEPARTMENT OF TRANSPORTATION

TEMPORARY CLOSURES

SEPTEMBER 2002

STANDARD DRAWING NO. E 801-TCTC-01



/s/ Richard L. VanCleave 9-03-02
DESIGN STANDARDS ENGINEER DATE

/s/ Richard K. Smutzer 9-03-02
CHIEF HIGHWAY ENGINEER DATE

DESIGN STANDARDS ENGINEER