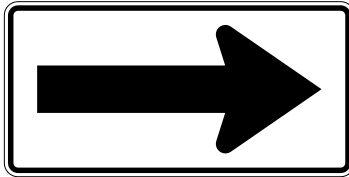


**GENERAL NOTES**

1. See Standard Drawing E 801-TCSN-11 for additional general notes.



XW1-6  
XW1-6-A

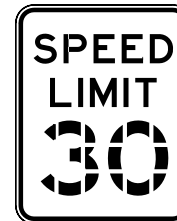
1



XW8-3-A



R6-2-A (R or L)



R2-1  
R2-1-B

1



R6-1 (R or L)



XW6-2a-A  
XW6-2a-B

1



R4-1  
R4-1-B

1



XW13-1-A

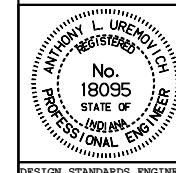
To be used below a warning sign only.

INDIANA DEPARTMENT OF TRANSPORTATION

TRAFFIC CONTROL  
SIGNS

JUNE 1995

STANDARD DRAWING NO. E 801-TCSN-06



DETAILS PLACED IN THIS FORMAT 11-15-99

/s/ Anthony L. Uremovich 11-15-99  
DESIGN STANDARDS ENGINEER DATE

/s/ Firooz Zandi 11-15-99  
CHIEF HIGHWAY ENGINEER DATE

DESIGN STANDARDS ENGINEER

ORIGINALLY APPROVED 7-03-95