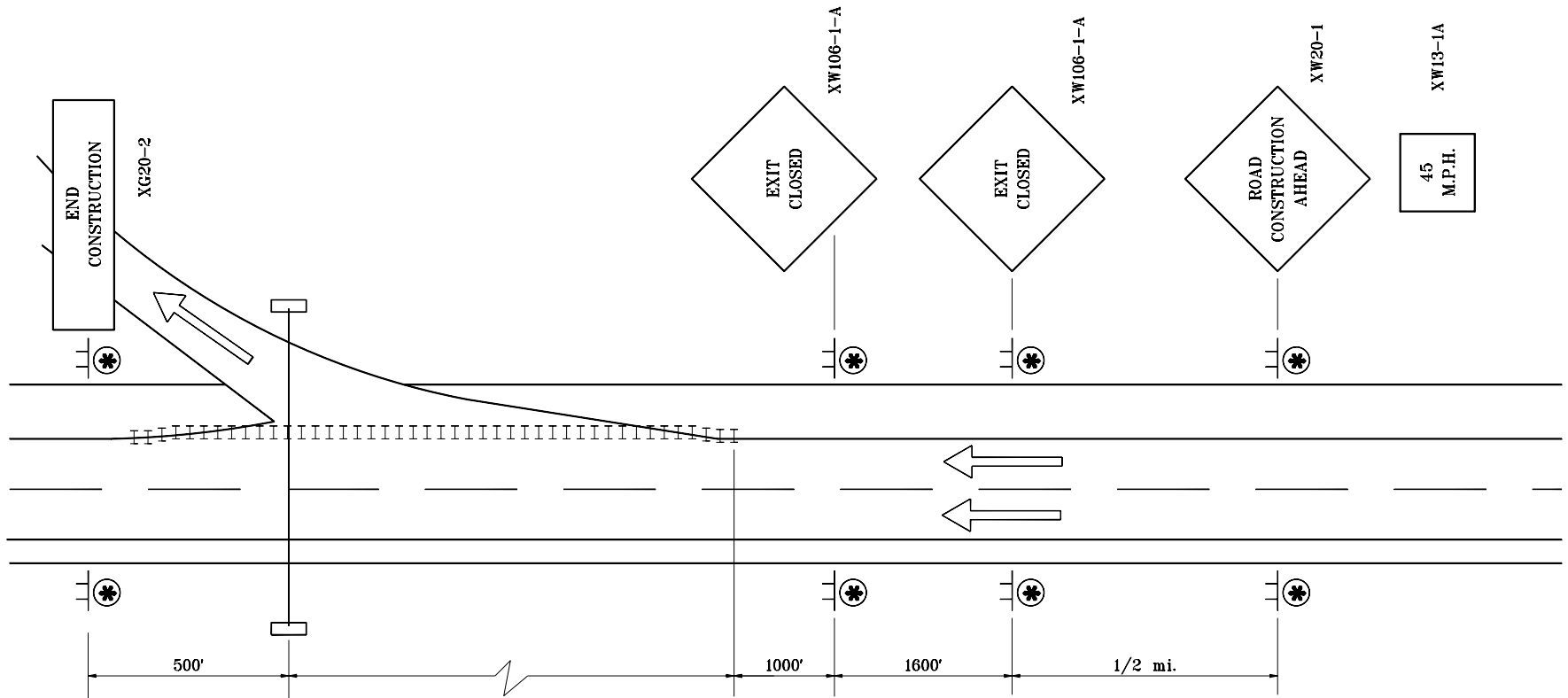


GENERAL NOTES

1. See Standard Drawing E 801-TCLG-01 for Legend and General Notes.



**MULTI-LANE DIVIDED HIGHWAY,
LONG-TERM CLOSURE**

INDIANA DEPARTMENT OF TRANSPORTATION	
TRAFFIC CONTROL FOR OVERHEAD SIGN INSTALLATION	
JUNE 1995	
STANDARD DRAWING NO. E 801-TCLC-14	
DETAILS PLACED IN THIS FORMAT 11-15-99	
	/s/ Anthony L. Uremovich 11-15-99 DESIGN STANDARDS ENGINEER DATE
	/s/ Firooz Zandi 11-15-99 CHIEF HIGHWAY ENGINEER DATE
	ORIGINALLY APPROVED 7-03-95