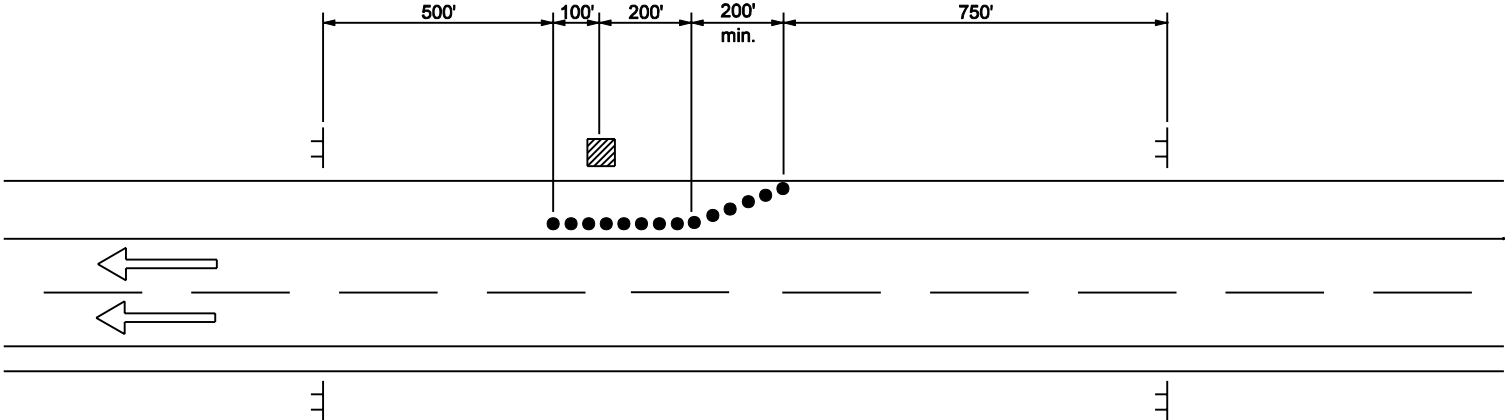


END
CONSTRUCTION
XG20-2

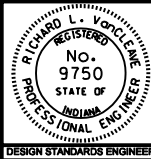
SHOULDER
WORK
AHEAD
XW21-5-A

GENERAL NOTES

- 1. See standard drawing E 801-TCLG-01 for legend and General Notes.



MULTI-LANE DIVIDED HIGHWAY

INDIANA DEPARTMENT OF TRANSPORTATION	
TRAFFIC CONTROL FOR SHOULDER WORK	
SEPTEMBER 2002	
STANDARD DRAWING NO. E 801-TCLC-12	
	/s/ Richard L. VanCleave 9-03-02 DESIGN STANDARDS ENGINEER DATE
	/s/ Richard K. Smutzer 9-03-02 CHIEF HIGHWAY ENGINEER DATE
DESIGN STANDARDS ENGINEER	